



# WYNNUM MANLY SAILING CLUB

## WMSC COURSE BOOKLET 2024





## 5-star service & results

*"It was a pleasure to deal with Coastal Marine Boat Sales from first point of contact, to completion of the sale. Graeme was extremely professional, knowledgeable, and patient. Everything was very straightforward and he is always willing to help. Thanks again for all the help and we look forward to crossing paths again, as we continue on this new chapter of our boating lifestyle". – Gary*



# Looking to sell your boat?

Call Graeme Sharp **0412 743 671**



**cmbrokers.com.au**



# WYNNUM MANLY SAILING CLUB

*Courses may also be briefed as 'course in reverse'*

## **COURSE A - 7.2nm**

Green Island to Starboard,  
Green Island East Racing Buoy to Starboard,  
Green Island to Starboard

## **COURSE B - 9nm**

Green Island to Starboard,  
Hope Banks Racing Buoy to Starboard,  
Green Island to Starboard

## **COURSE C - 9.2nm**

Green Island to Starboard,  
Hope Banks Racing Buoy to Starboard,  
Green Island Racing Buoy to Port,  
Green Island to Starboard

## **COURSE D - 10nm**

Green Island to Starboard,  
St Helena East Red to Starboard,  
Green Island Racing Buoy to Starboard,  
Green Island to Starboard

## **COURSE E - 12nm**

Lockyer to Port,  
Green Island East Racing Buoy to Starboard,  
Peel Island West Racing Buoy to Starboard,  
Huybers to Port

## **COURSE F - 12nm**

Green Island to Starboard,  
St Helena Island to Starboard,  
St Helena Red to Starboard,  
Green Island East Racing Buoy to Starboard,  
Lockyer to Starboard

## **COURSE G - 15nm**

Green Island to Starboard,  
Peel Island West Racing Buoy to Starboard,  
Empire Point to Starboard, Huybers to Port

## **COURSE H - 13nm**

Green Island to Starboard,  
St Helena East Red to Starboard,  
Hope Banks Racing Buoy to Starboard,  
Green Island to Starboard

## **COURSE I - 13nm**

Green Island to Starboard,  
Green Island Racing Buoy to Starboard,  
Empire Point to Starboard, Huybers to Port

## **COURSE J - 13nm**

Green Island to Port,  
Green Island Racing Buoy to Starboard,  
Hope Banks Racing Buoy to Starboard,  
Peel Island West Racing Buoy to Starboard,  
Huybers to Port

## **COURSE K - 14nm**

Lockyer to Port,  
Hope Banks Racing Buoy to Starboard,  
Peel Island West Racing Buoy to Starboard,  
Empire Point Red to Starboard,  
Huybers to Port

## **COURSE L - 14.5nm**

Green Island to Port,  
Green Island Racing Buoy to Starboard,  
Hope Banks Racing Buoy to Starboard,  
Peel Island West Racing Buoy to Starboard,  
Empire Point to Starboard, Huybers to Port

## **COURSE M - 15nm**

Green Island to Starboard,  
Fishermans Gutter Racing Buoy to Starboard,  
Hope Banks Racing Buoy to Starboard,  
Lockyer to Starboard

## **COURSE N - 15nm**

Green Island to Starboard,  
Green Island Racing Buoy to Port,  
Hope Banks Racing Buoy to Port,  
Green Island Racing Buoy to Port,  
Hope Banks Racing Buoy to Port,  
Green Island Racing Buoy to Port,  
Lockyer to Starboard

## **COURSE O - 16nm**

Lockyer to Port,  
Green Island East Racing Buoy to Port,  
St Helena East Red to Port,  
Green Island East Racing Buoy to Port,  
St Helena East Red to Port,  
St Helena South Cardinal to Starboard,  
Green Island to Port



# WYNNUM MANLY SAILING CLUB

## COURSE P- 17nm

Green Island to Starboard,  
St Helena East Red to Port,  
Mud Island Green South to Starboard,  
Fishermans Gutter Racing Buoy to Starboard,  
Hope Banks Racing Buoy to Starboard,  
Lockyer to Starboard

## COURSE Q - 17nm

Green Island to Starboard,  
St Helena East Red to Starboard,  
Mud Island West Green to Port,  
Jeays Reef Buoy to Starboard,  
Mud Island East Cardinal to Starboard,  
Green Island Racing Buoy to Starboard,  
Lockyer to Starboard

## COURSE R - 22nm

Green Island to Starboard,  
St Helena East Red to Starboard,  
Fishermans Gutter Racing Buoy to Starboard,  
Green Island Racing Buoy to Port,  
Peel Island Racing Buoy to Starboard,  
Empire Point to Starboard,  
Huybers to Port

## COURSE S - 24nm

Green Island to Starboard,  
Peel Island to Port,  
Huybers Beacon to Port

**NOTE:** Hope Banks Isolated Danger mark is not a mark in any of our courses.

**All aids to navigation are to be correctly observed except where indicated otherwise in the course description.**

**Yachts must observe a 20 metre exclusion zone around each of the following aids to navigation:**

Jay's Reef Buoy, Hope Banks Beacon, Norman J Wright Beacon, Crawford James Pattison Beacon, Red Beacon ND Green Island, South Cardinal Beacon St Helena Island.

**SAGS Trophy**



**St Helena Cup Trophy**



**The Hart Cup Trophy**

Manly to Mooloolaba Race



**The Founders Trophy**



"State of Queensland, Department of Transport and Main Roads (Maritime Safety Queensland). When using the Beacon to Beacon Guide booklets and/or the maps contained therein for commercial or non-commercial purposes, the Department of Transport and Main Roads (Maritime Safety Queensland) gives no warranty of any kind whether express, implied, statutory or otherwise in respect to the availability, accuracy, currency, completeness, quality or reliability of the information or that the information will be fit for any particular purpose or will not infringe any third party Intellectual Property rights and the liability (including without limitation, liability in negligence, negligent misstatement and pure economic loss) of the Department of Transport and Main Roads (Maritime Safety Queensland) for any direct, indirect or consequential loss, damage, cost or expense howsoever resulting from the use of, or reliance on, the information is entirely excluded".

"This Navionics electronic marine chart incorporates Data which is ©Commonwealth of Australia ("Great Barrier Reef Marine Park Authority, 2009", Marine Parks from the "Department of the Environment and Energy, 2018"). The Data has been used in this Navionics electronic marine chart with the permission of the Commonwealth. The Commonwealth has not evaluated the Data as altered and incorporated within this Navionics electronic marine chart, and therefore gives no warranty regarding its accuracy, completeness, currency or suitability for any particular purpose."



# WYNNUM MANLY SAILING CLUB

## COURSE A - 7.2nm

Green Island to Starboard, Green Island East Racing Buoy to Starboard, Green Island to Starboard



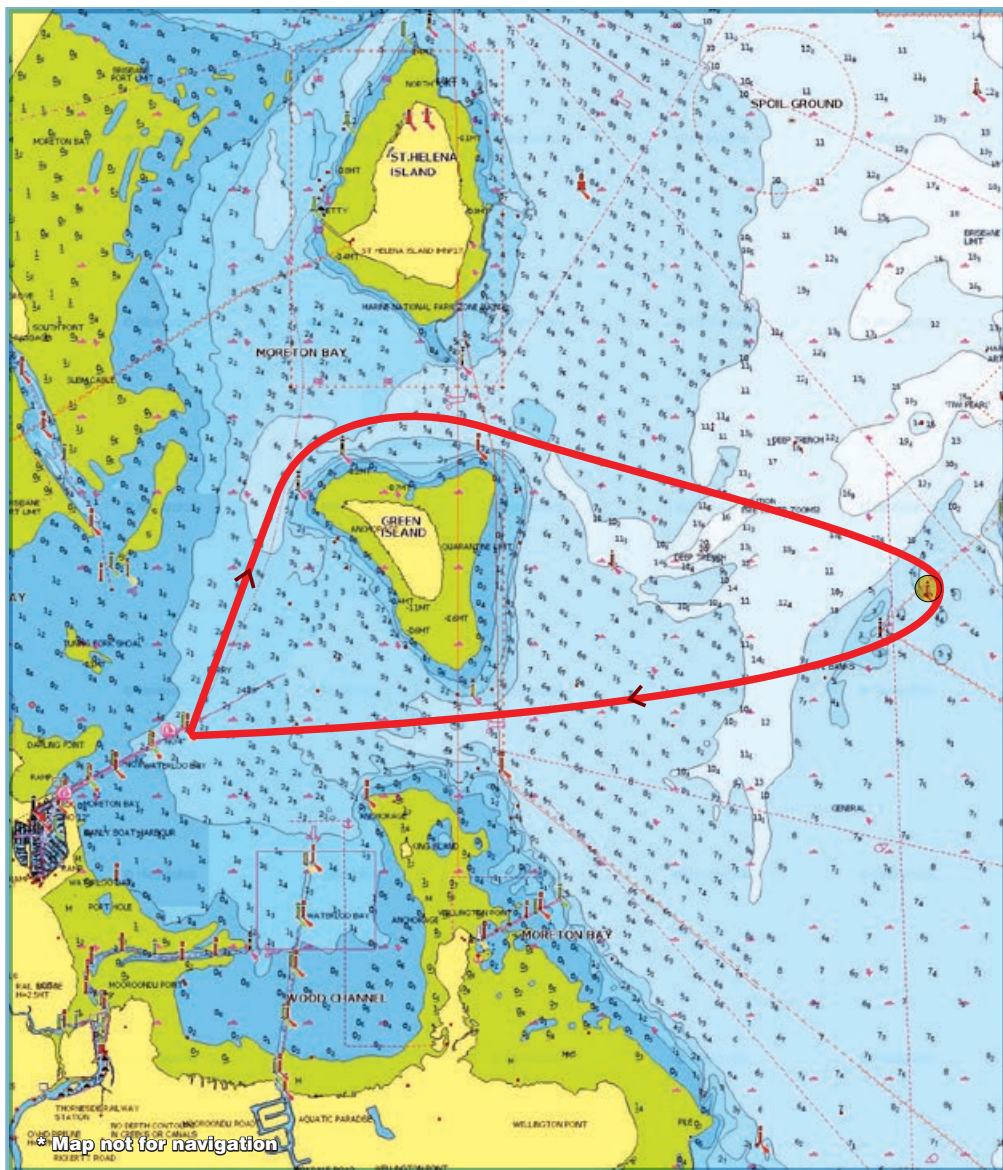
Green Island East Racing Buoy 27°25.6'S 153°15.5'E



# WYNNUM MANLY SAILING CLUB

## COURSE B - 9nm

Green Island to Starboard, Hope Banks Racing Buoy to Starboard, Green Island to Starboard



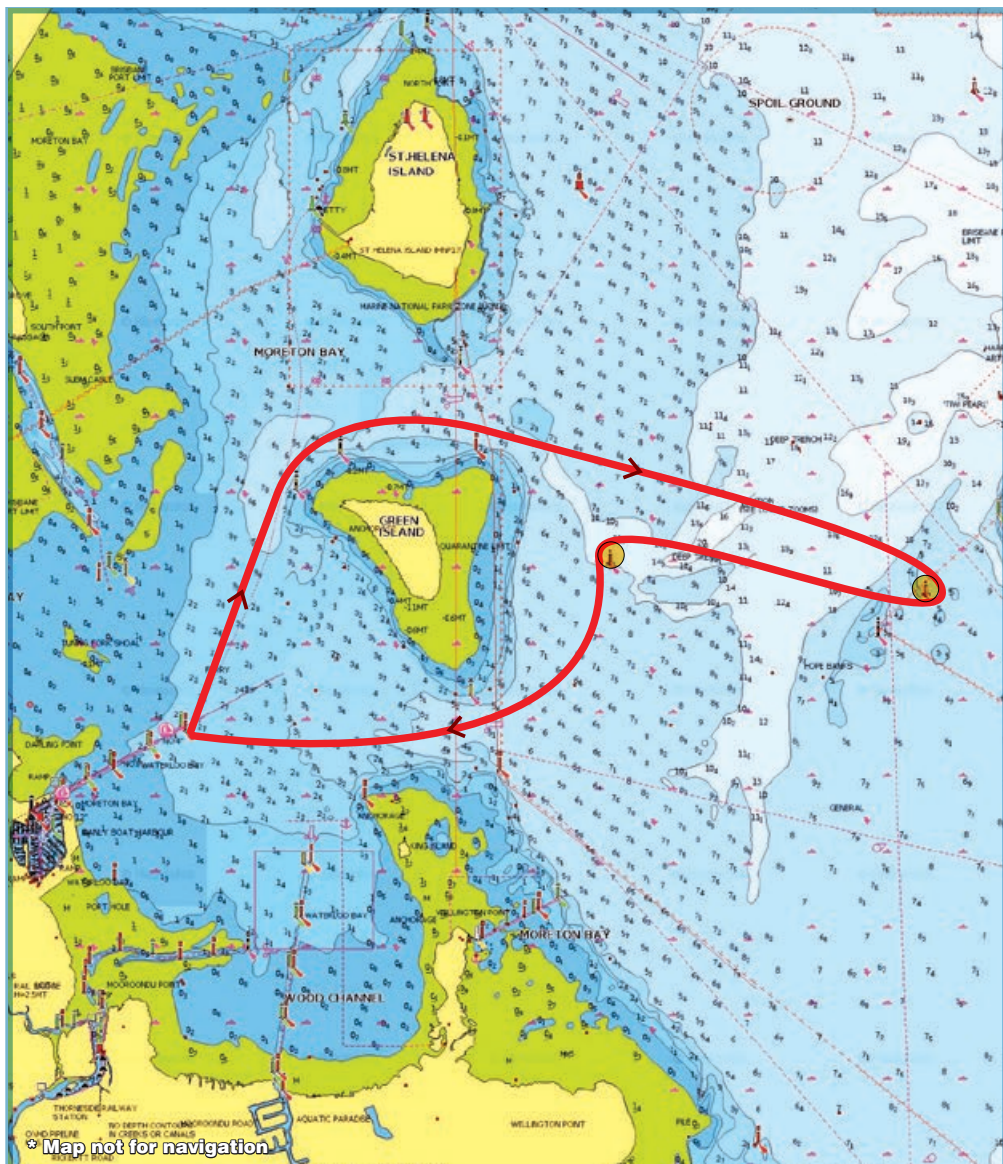
Hope Banks Racing Buoy 27°25.8'S 153°17.7'E



# WYNNUM MANLY SAILING CLUB

## COURSE C - 9.2nm

Green Island to Starboard, Hope Banks Racing Buoy to Starboard,  
Green Island East Racing Buoy to Port, Green Island to Starboard



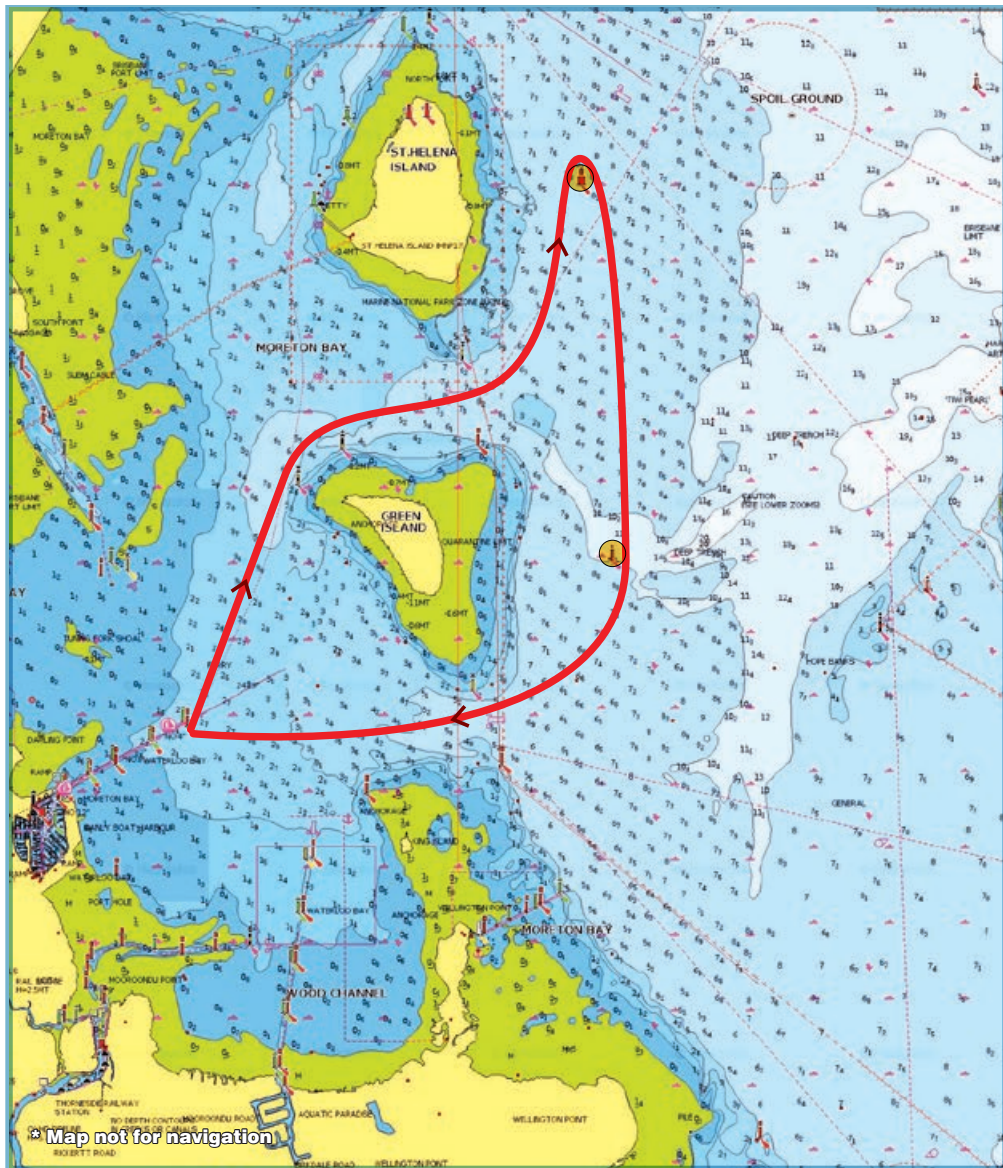
Hope Banks Racing Buoy 27°25.8'S 153°17.7'E  
Green Island East Racing Buoy 27°25.6'S 153°15.5'E



# WYNUM MANLY SAILING CLUB

## COURSE D - 10nm

Green Island to Starboard, St Helena East Red to Starboard,  
Green Island East Racing Buoy to Starboard, Green Island to Starboard



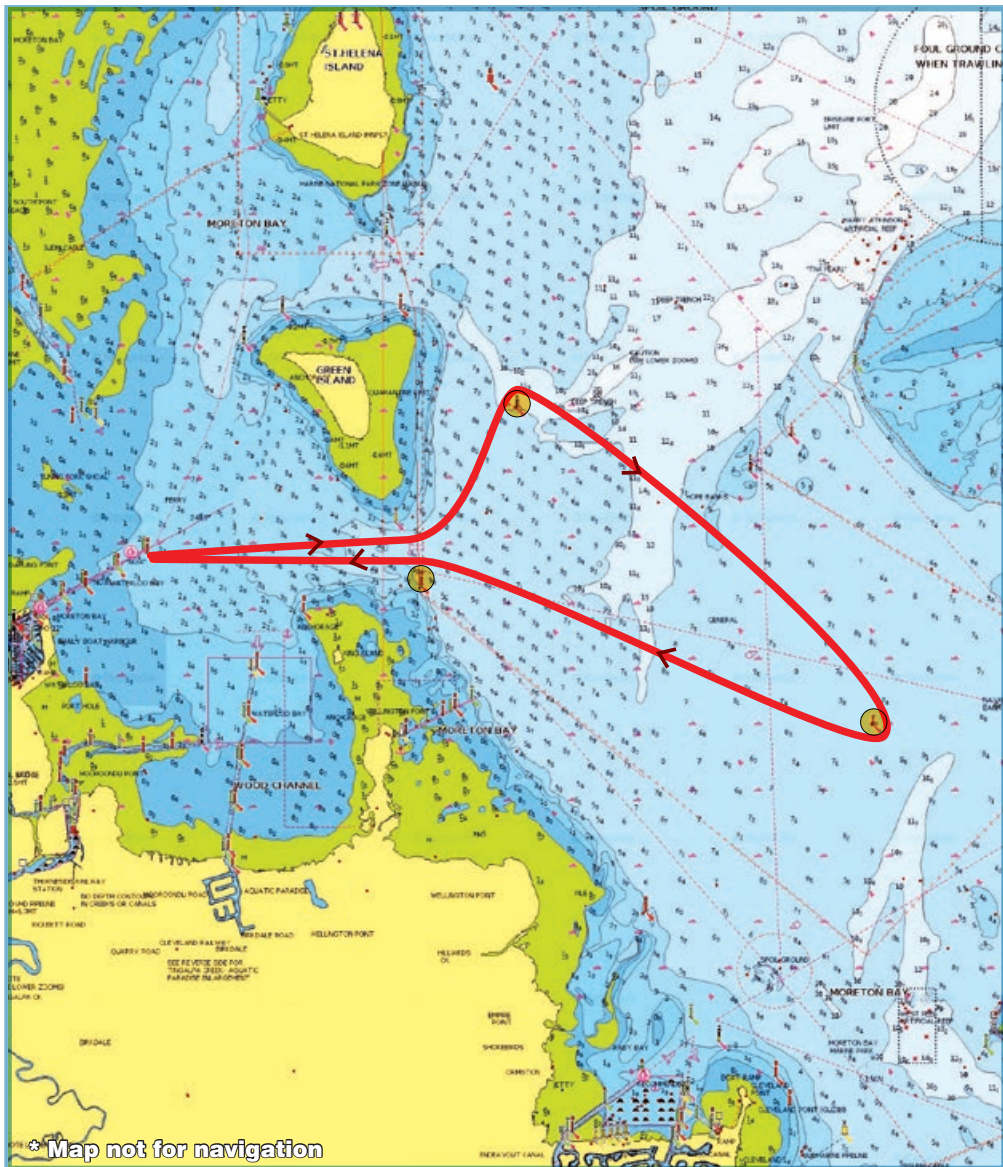
St Helena East Red Buoy 27°23.2'S 153°15.3'E  
Green Island East Racing Buoy 27°25.6'S 153°15.5'E



# WYNNUM MANLY SAILING CLUB

## COURSE E - 12nm

Lockyer to Port, Green Island East Racing Buoy to Starboard,  
Peel Island West Racing Buoy to Starboard, Huybers to Port



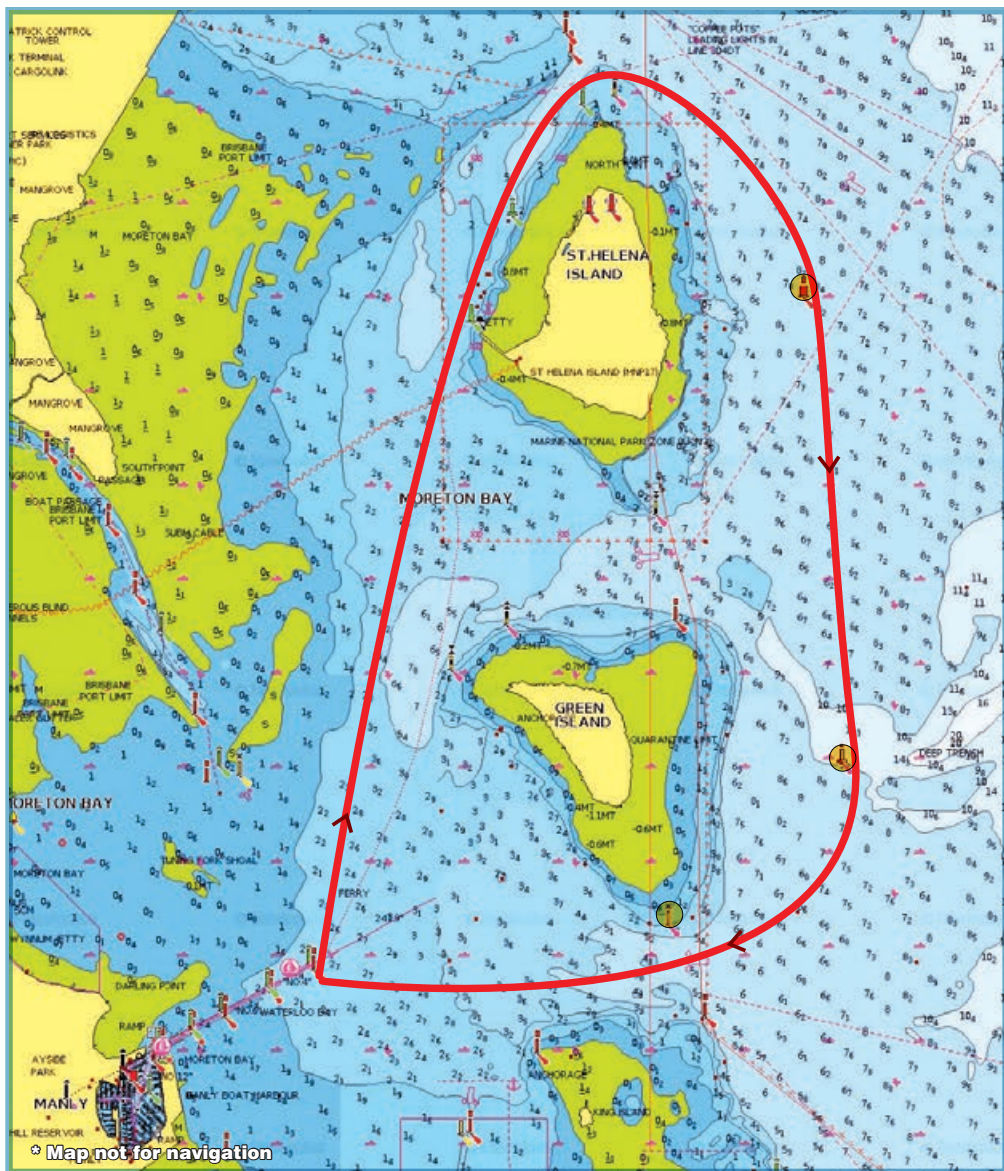
Green Island East Racing Buoy 27°25.6'S 153°15.5'E  
Peel Island West Racing Buoy 27°27.9'S 153°18.4'E  
Huybers Beacon 27°26.9'S 153°14.7'E



# WYNNUM MANLY SAILING CLUB

## COURSE F - 12nm

Green Island to Starboard, St Helena Island to Starboard, St Helena Red to Starboard,  
Green Island East Racing Buoy to Starboard, Lockyer to Starboard



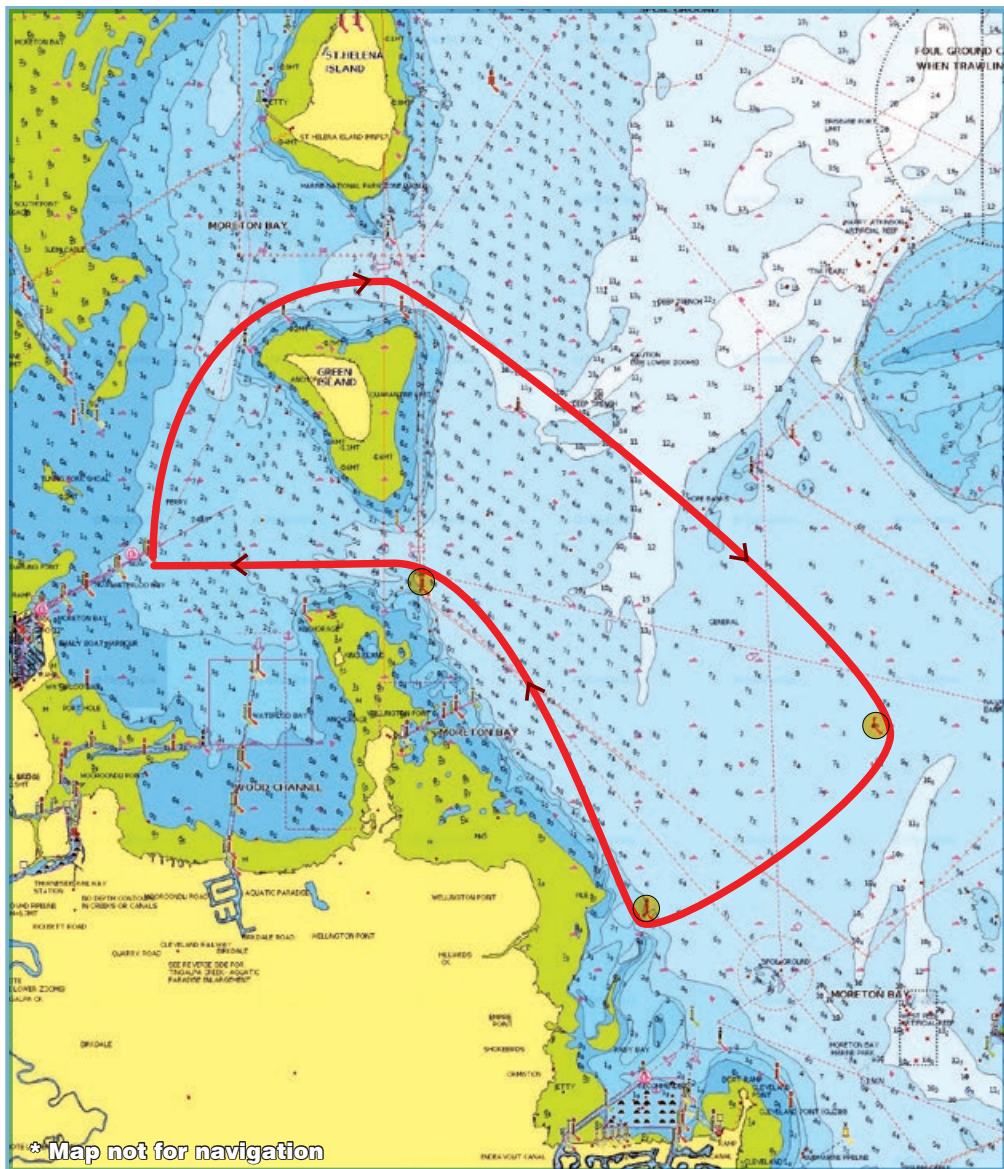
St Helena East Red Buoy 27°23.2'S 153°15.3'E  
Green Island East Racing Buoy 27°25.6'S 153°15.5'E  
Huybers Beacon 27°26.9'S 153°14.7'E



# WYNNUM MANLY SAILING CLUB

## COURSE G - 15nm

Green Island to Starboard, Peel Island West Racing Buoy to Starboard,  
Empire Point to Starboard, Huybers to Port



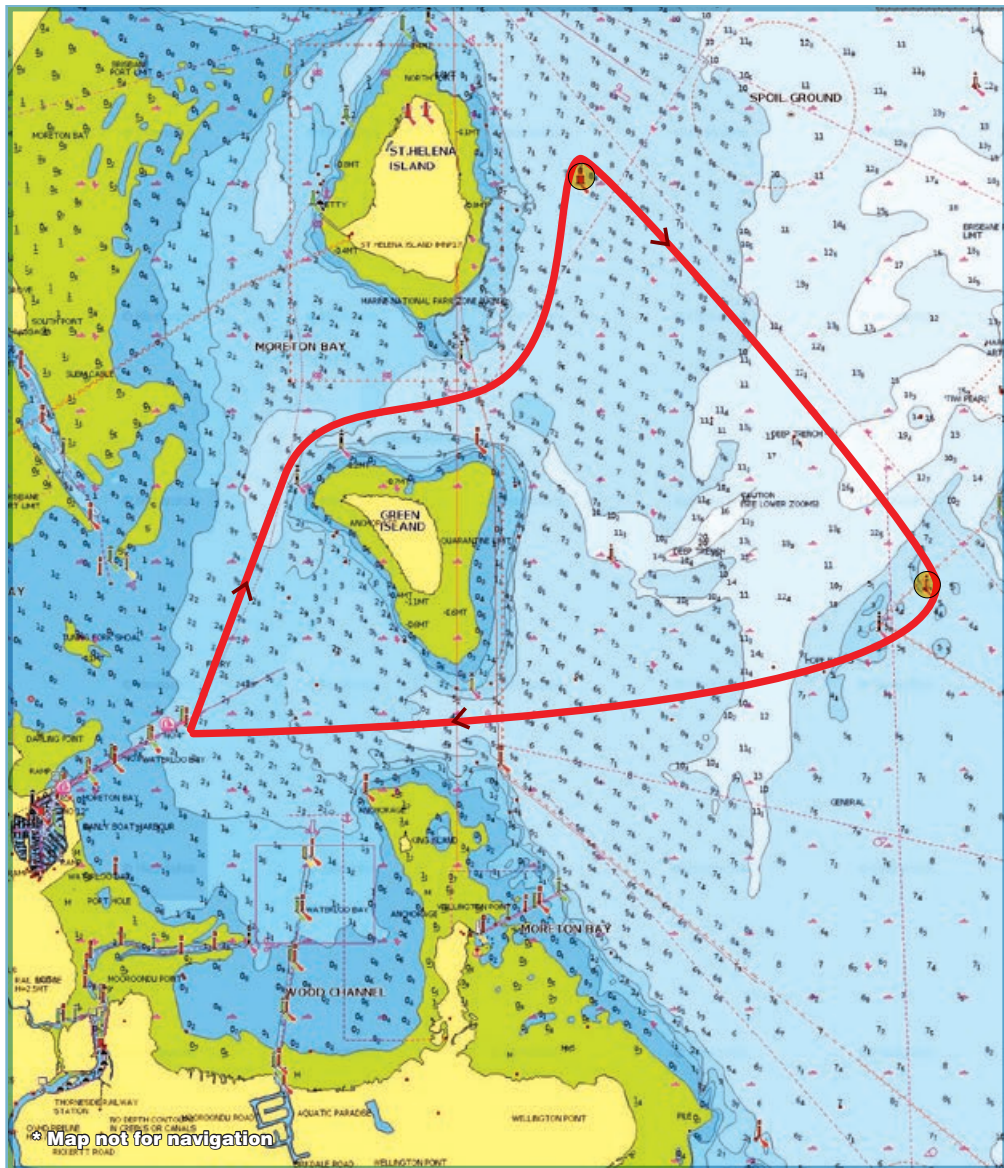
Peel Island West Racing Buoy 27°27.9'S 153°18.4'E  
Empire Point 27°29.2'S 153°16.5'E  
Huybers Beacon 27°26.9'S 153°14.7'E



# WYNNUM MANLY SAILING CLUB

## COURSE H - 13nm

Green Island to Starboard, St Helena East Red to Starboard,  
Hope Banks Racing Buoy to Starboard, Green Island to Starboard



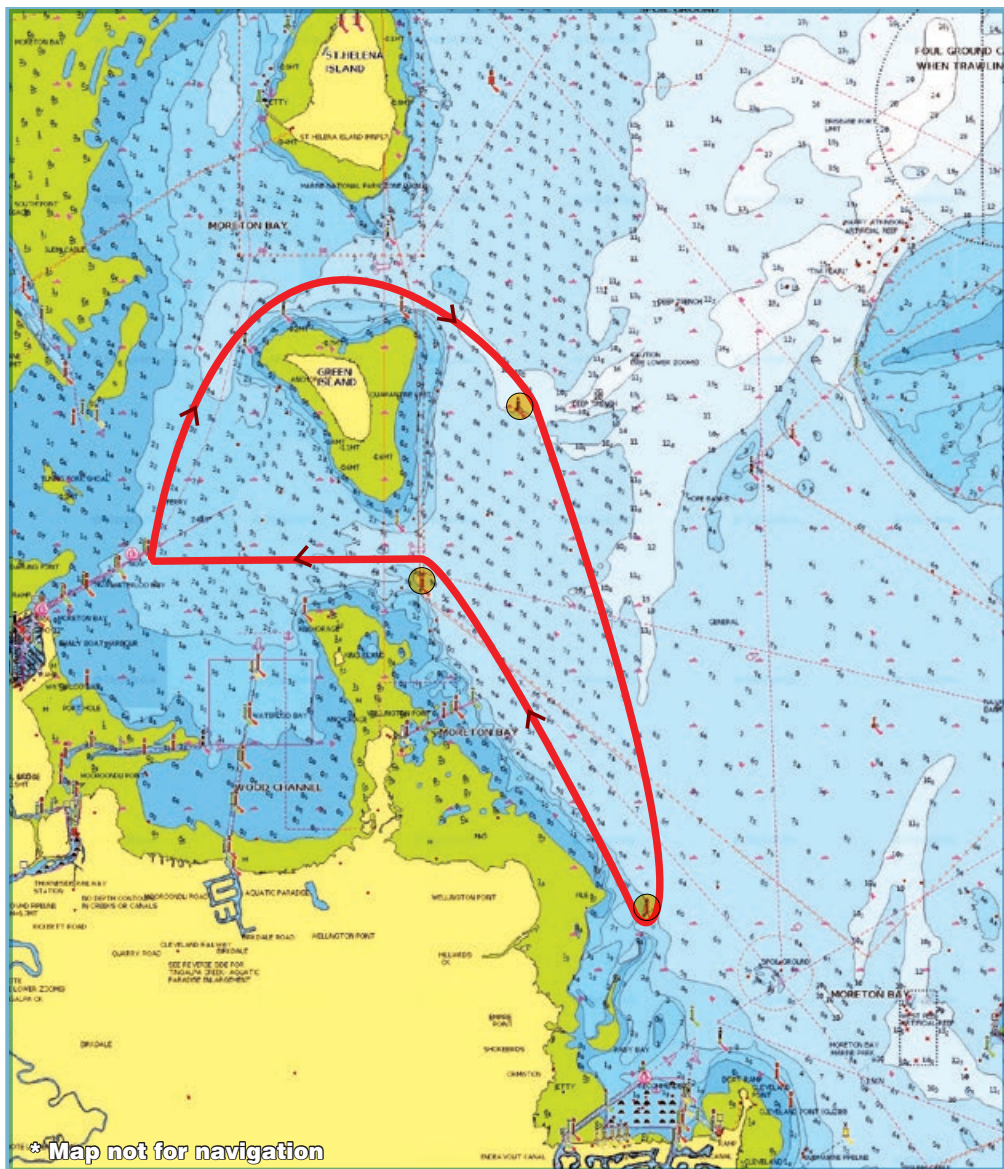
St Helena East Red Buoy 27°23.2'S 153°15.3'E  
Hope Banks Racing Buoy 27°25.8'S 153°17.7'E



# WYNNUM MANLY SAILING CLUB

## COURSE I - 13nm

Green Island to Starboard, Green Island Racing Buoy to Starboard, Empire Point to Starboard, Huybers to Port



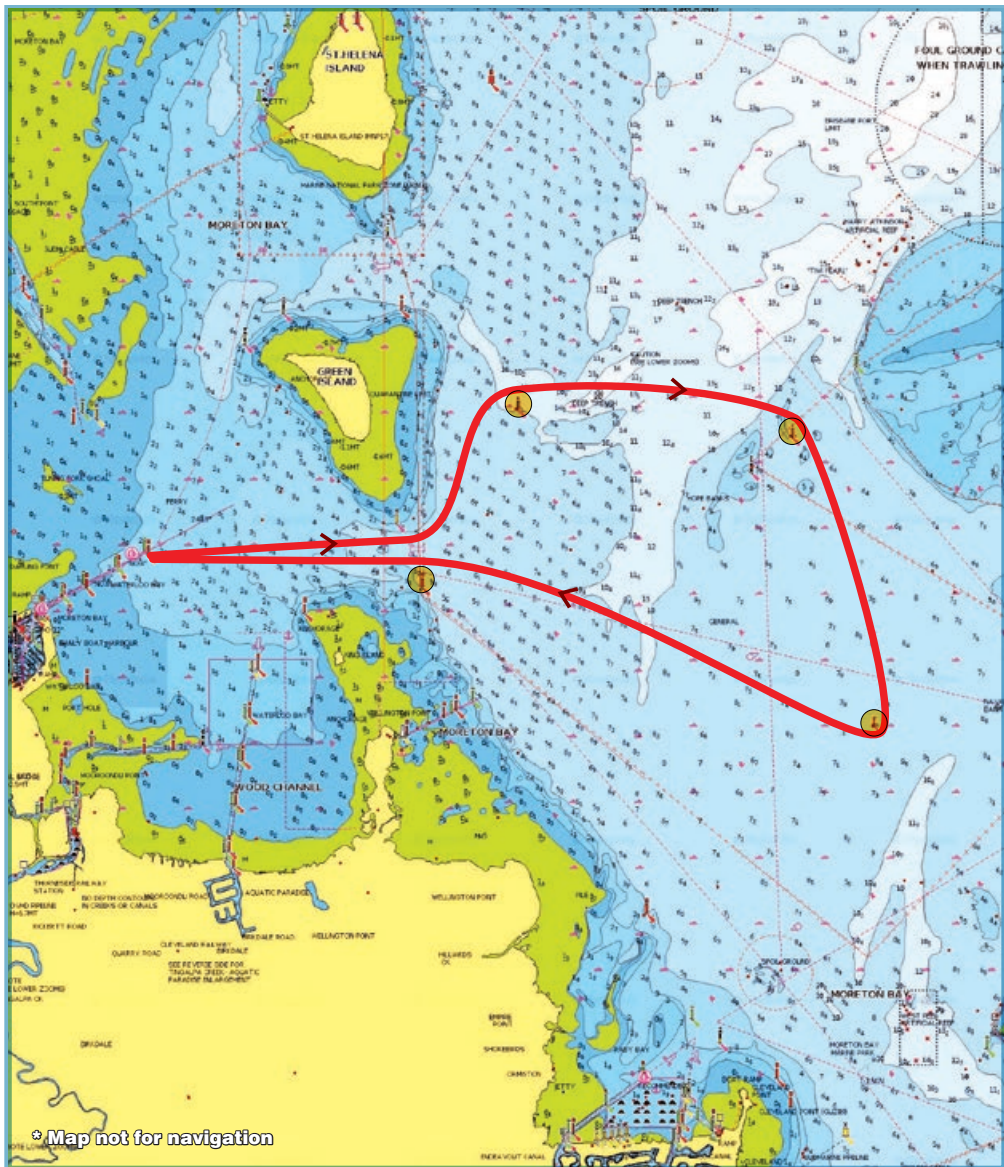
Green Island East Racing Buoy 27°25.6'S 153°15.5'E  
Empire Point 27°29.2'S 153°16.5'E  
Huybers Beacon 27°26.9'S 153°14.7'E



# WYNNUM MANLY SAILING CLUB

## COURSE J - 13nm

Green Island to Port, Green Island East Racing Buoy to Starboard,  
Hope Banks Racing Buoy to Starboard, Peel Island West Racing Buoy to Starboard, Huybers to Port



Green Island East Racing Buoy 27°25.6'S 153°15.5'E  
Hope Banks Racing Buoy 27°25.8'S 153°17.7'E

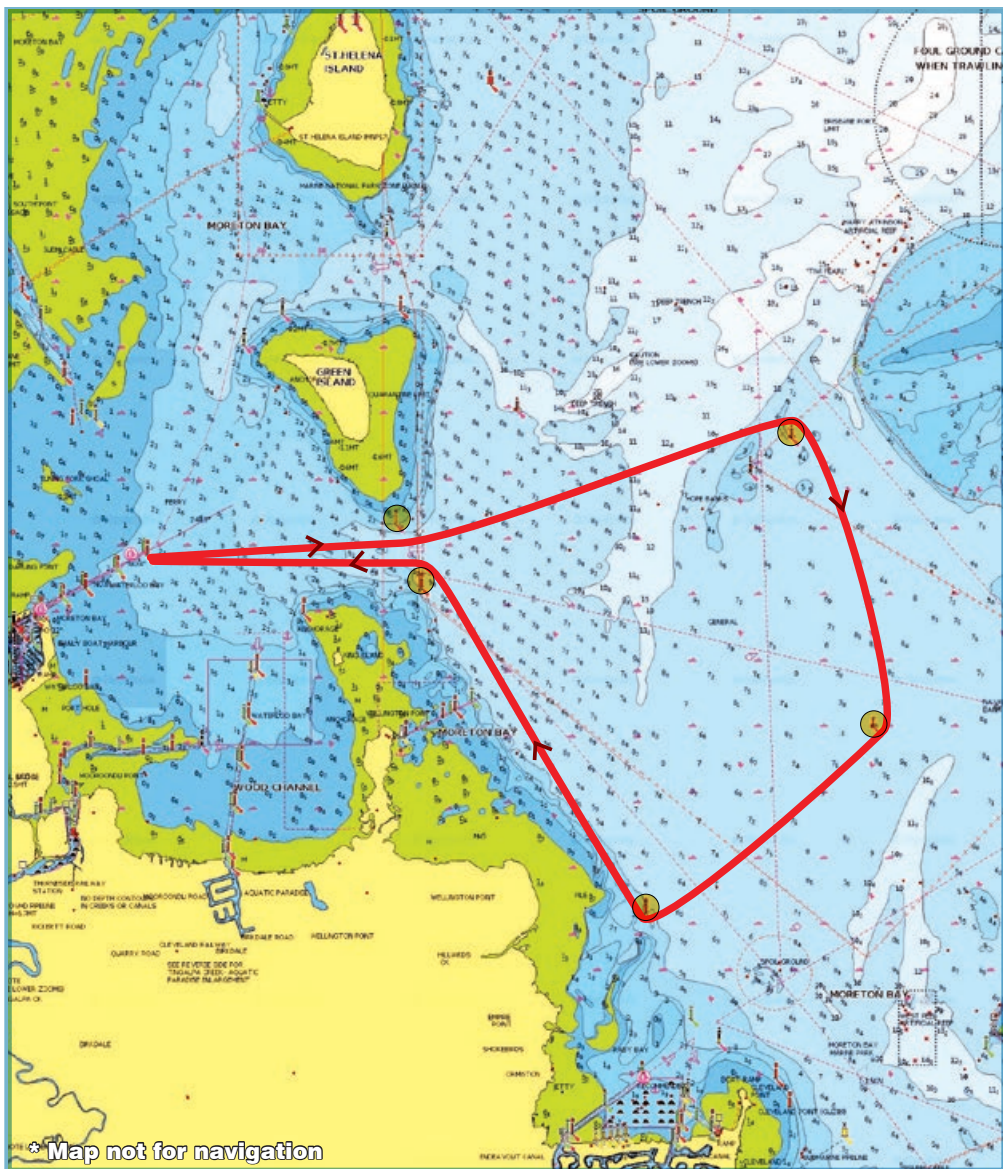
Peel Island West Racing Buoy 27°27.9'S 153°18.4'E  
Huybers Beacon 27°26.9'S 153°14.7'E



# WYNNUM MANLY SAILING CLUB

## COURSE K - 14nm

Lockerby to Port, Hope Banks Racing Buoy to Starboard,  
Peel Island West Racing Buoy to Starboard, Empire Point Red to Starboard, Huybers to Port



\* Map not for navigation

Lockerby Light 27°26.4'S 153°14.5'E  
Hope Banks Racing Buoy 27°25.8'S 153°17.7'E  
Peel Island West Racing Buoy 27°27.9'S 153°18.4'E

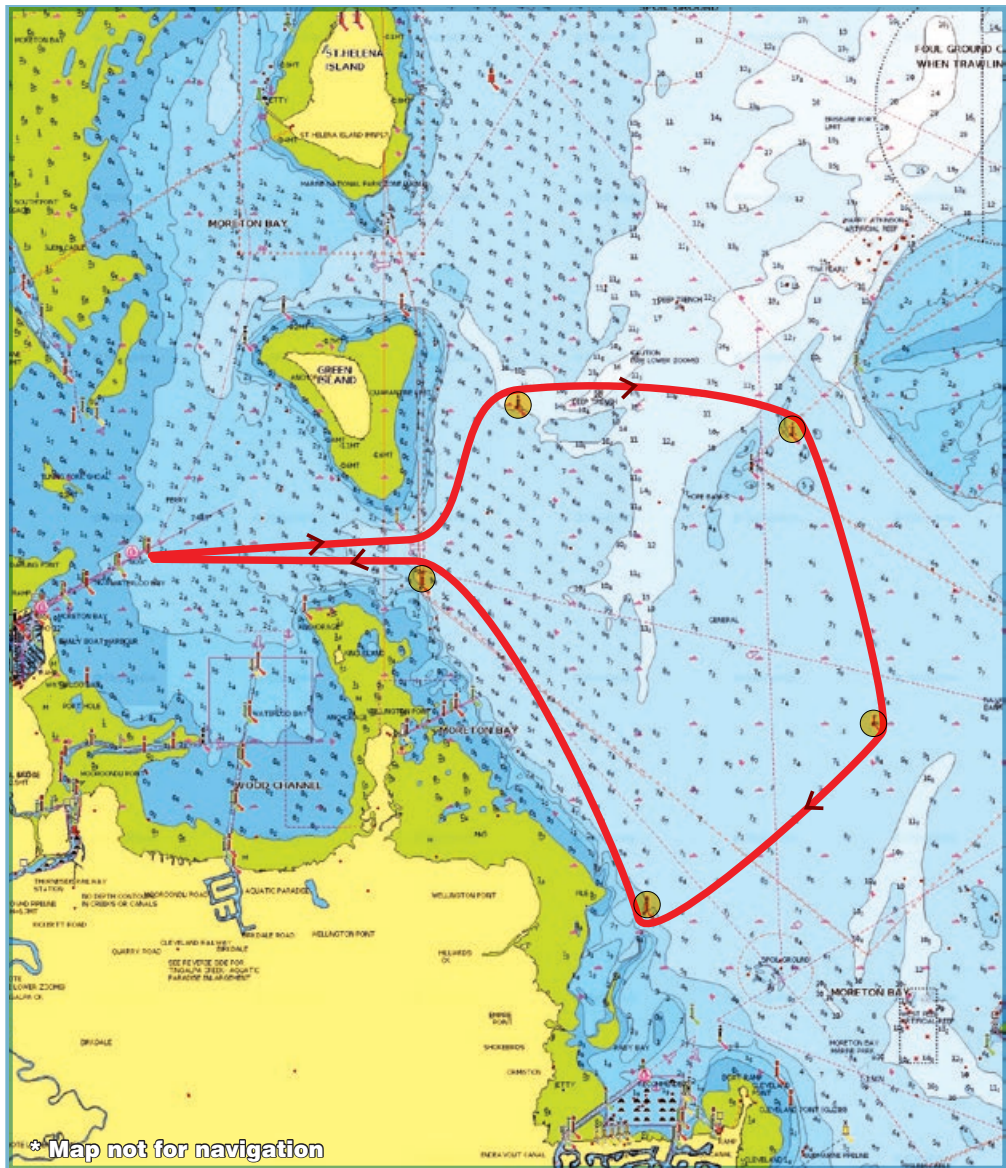
Empire Point 27°29.2'S 153°16.5'E  
Huybers Beacon 27°26.9'S 153°14.7'E



# WYNNUM MANLY SAILING CLUB

## COURSE L - 14.5nm

Green Island to Port, Green Island East Racing Buoy to Starboard, Hope Banks Racing Buoy to Starboard, Peel Island West Racing Buoy to Starboard, Empire Point to Starboard, Huybers to Port



Green Island East Racing Buoy 27°25.6'S 153°15.5'E  
Hope Banks Racing Buoy 27°25.8'S 153°17.7'E

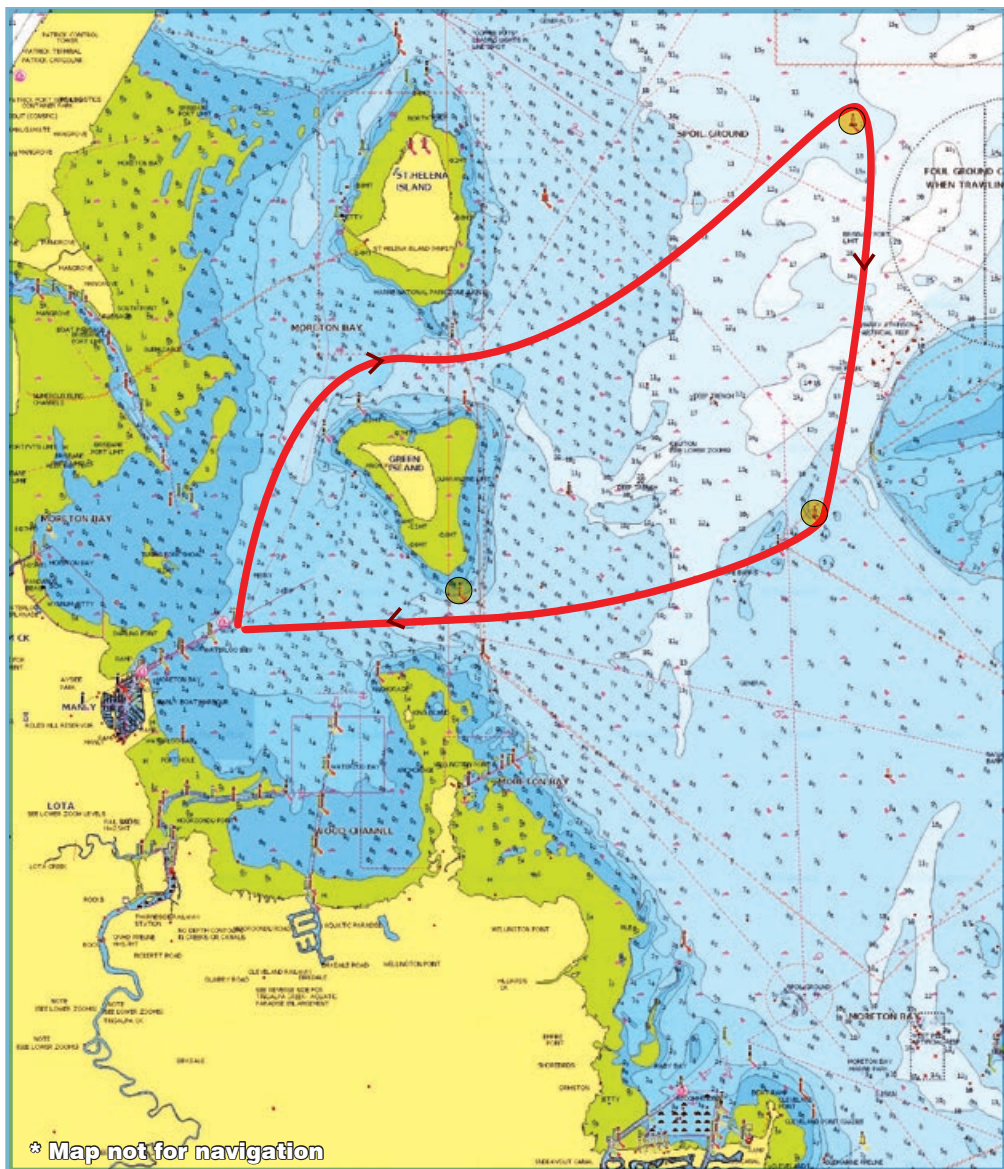
Peel Island West Racing Buoy 27°27.9'S 153°18.4'E  
Empire Point 27°29.2'S 153°16.5'E  
Huybers Beacon 27°26.9'S 153°14.7'E



# WYNNUM MANLY SAILING CLUB

## COURSE M - 15nm

Green Island to Starboard, Fishermans Gutter Racing Buoy to Starboard,  
Hope Banks Racing Buoy to Starboard, Lockyer to Starboard



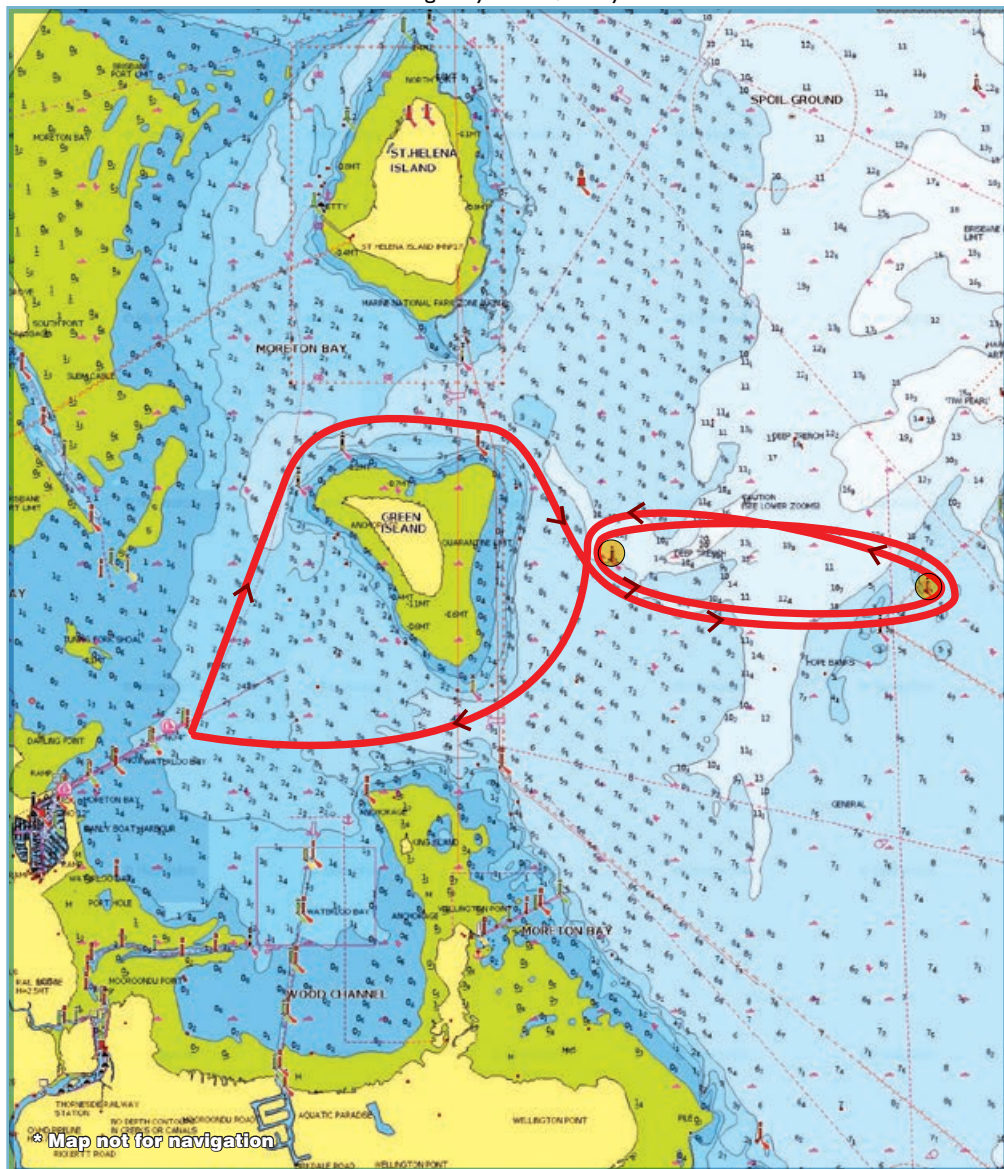
Fishermans Gutter Racing Buoy 27°22.564'S 153°18.110'E  
Hope Banks Racing Buoy 27°25.8'S 153°17.7'E  
Lockyer Light 27°26.4'S 153°14.5'E



# WYNNUM MANLY SAILING CLUB

## COURSE N - 15nm

Green Island to Starboard, Green Island Racing Buoy to Port, Hope Banks Racing Buoy to Port,  
Green Island Racing Buoy to Port, Hope Banks Racing Buoy to Port,  
Green Island Racing Buoy to Port, Lockyer to Starboard



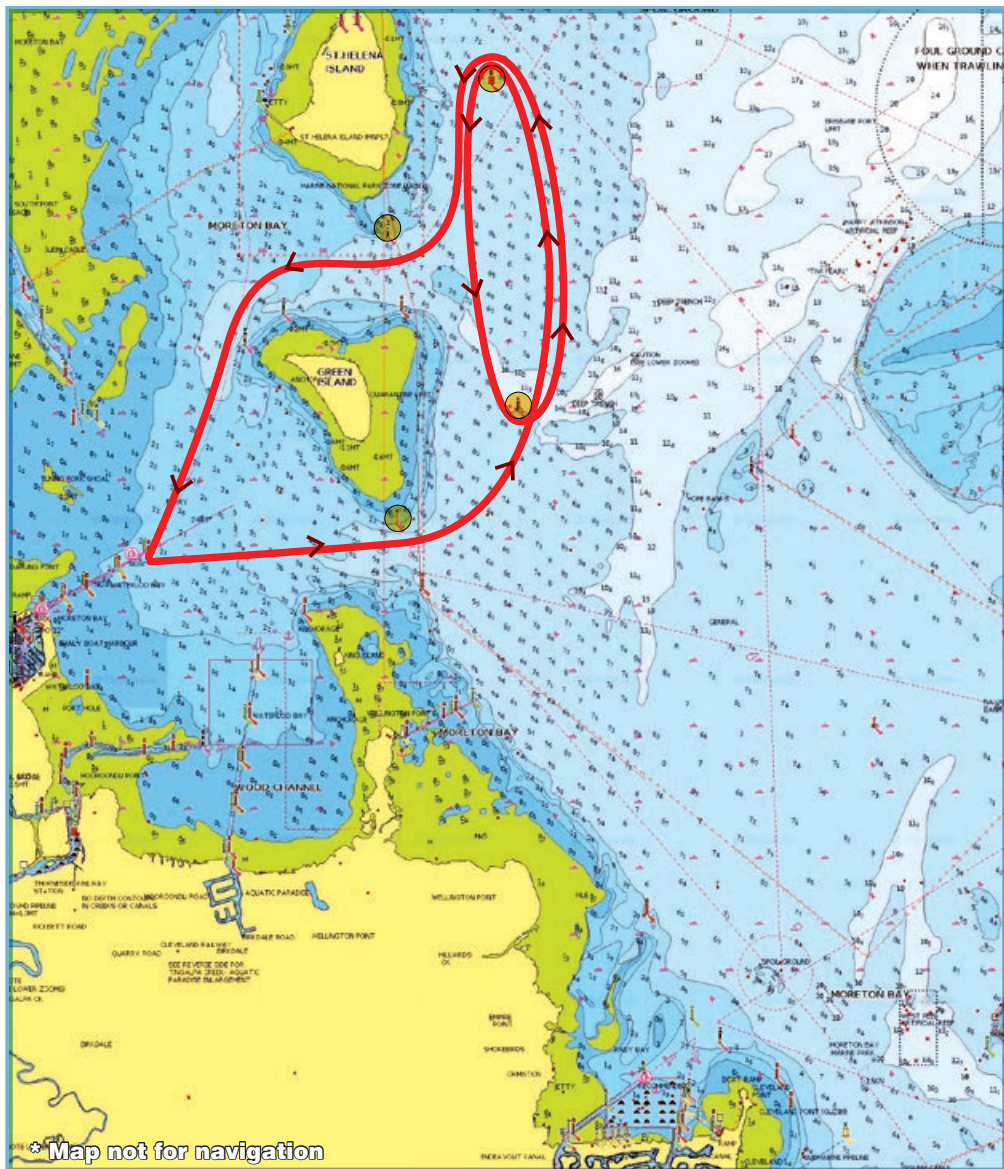
Green Island East Racing Buoy 27°25.6'S 153°15.5'E  
Hope Banks Racing Buoy 27°25.8'S 153°17.7'E



# WYNNUM MANLY SAILING CLUB

## COURSE O - 16nm

Lockyer to Port, Green Island East Racing Buoy to Port, St Helena East Red to Port,  
Green Island East Racing Buoy to Port, St Helena East Red to Port,  
St Helena South Cardinal to Starboard, Green Island to Port



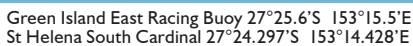
\* Map not for navigation

Lockyer Light 27°26.4'S 153°14.5'E  
Green Island East Racing Buoy 27°25.6'S 153°15.5'E

St Helena East Red Buoy 27°23.2'S 153°15.3'E  
St Helena South Cardinal 27°24.297'S 153°14.428'E



Green Island to Starboard, St Helena East Red to Port,  
Mud Island Green South to Starboard, Fishermans Gutter Racing Buoy to Starboard,  
Hope Banks Racing Buoy to Starboard, Lockyer to Starboard



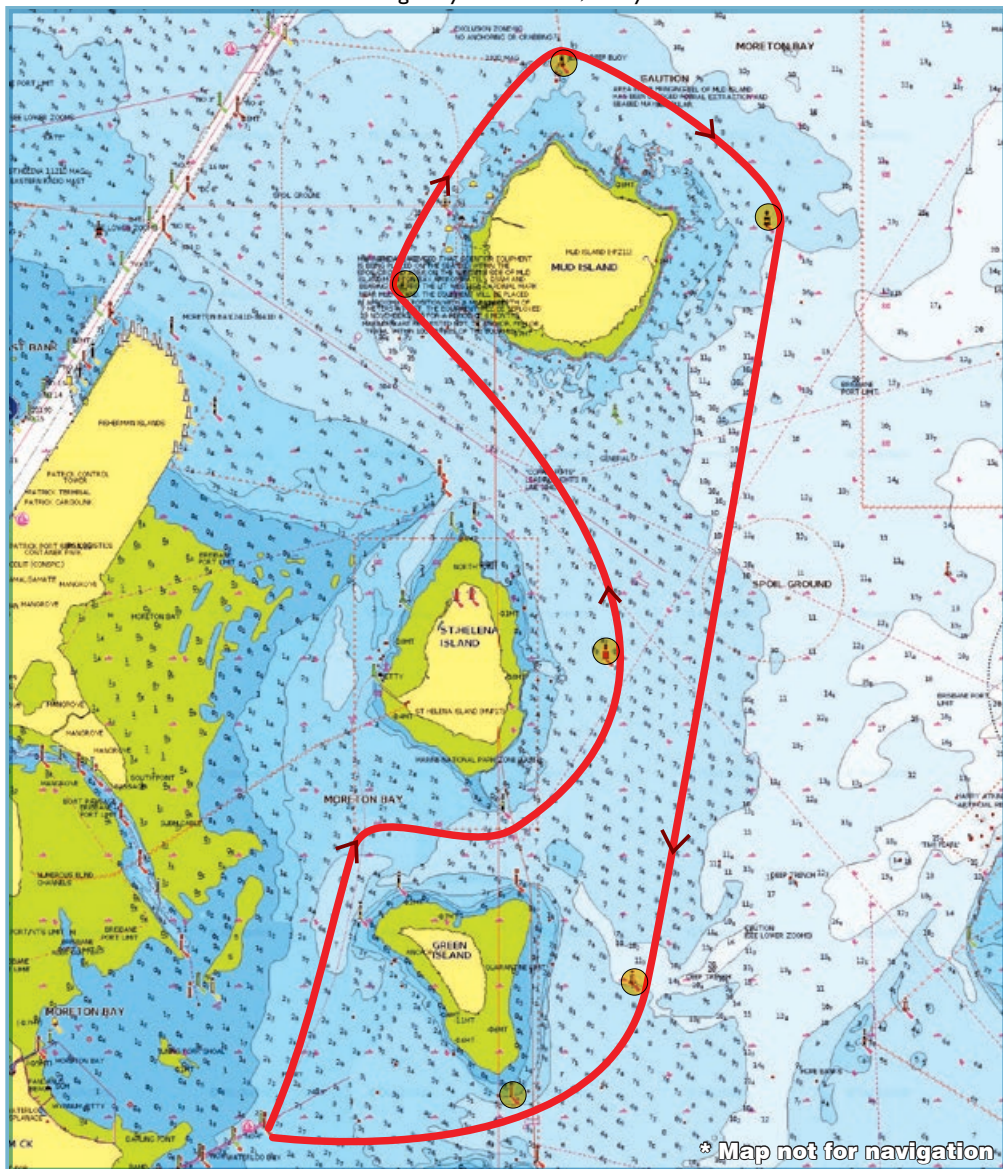
20



# WYNNUM MANLY SAILING CLUB

## COURSE Q - 20nm

Green Island to Starboard, St Helena East Red to Port, Mud Island West Green to Starboard,  
Jeays Reef Buoy to Starboard, Mud Island East Cardinal to Starboard,  
Green Island Racing Buoy to Starboard, Lockerby to Starboard



St Helena East Red Buoy 27°23.2'S 153°15.3'E  
Mud Island West Green 27°20.55 153°13.6E  
Jeays Reef Buoy 27°18.9S 153°14.9E

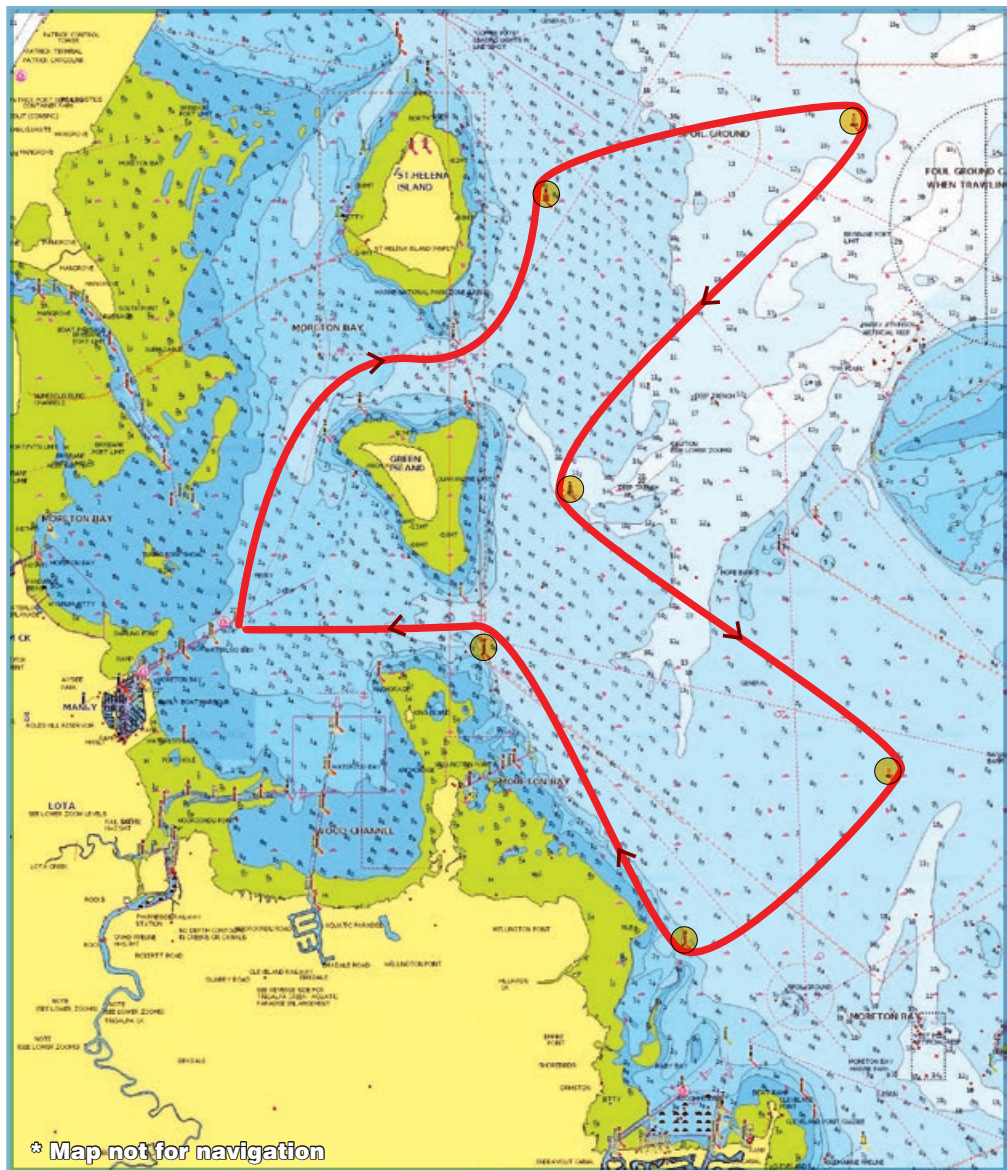
Mud Island East Cardinal 27°20.0S 153°16.7E  
Green Island East Racing Buoy 27°25.6'S 153°15.5'E  
Lockerby Light 27°26.4'S 153°14.5'E



# WYNNUM MANLY SAILING CLUB

## COURSE R - 22nm

Green Island to Starboard, St Helena East Red to Starboard, Fishermans Gutter Racing Buoy to Starboard, Green Island Racing Buoy to Port, Peel Island Racing Buoy to Starboard, Empire Point to Starboard, Huybers to Port



St Helena East Red Buoy 27°23.2'S 153°15.3'E  
Fishermans Gutter Racing Buoy 27°22.564'S 153°18.110'E  
Green Island East Racing Buoy 27°25.6'S 153°15.5'E

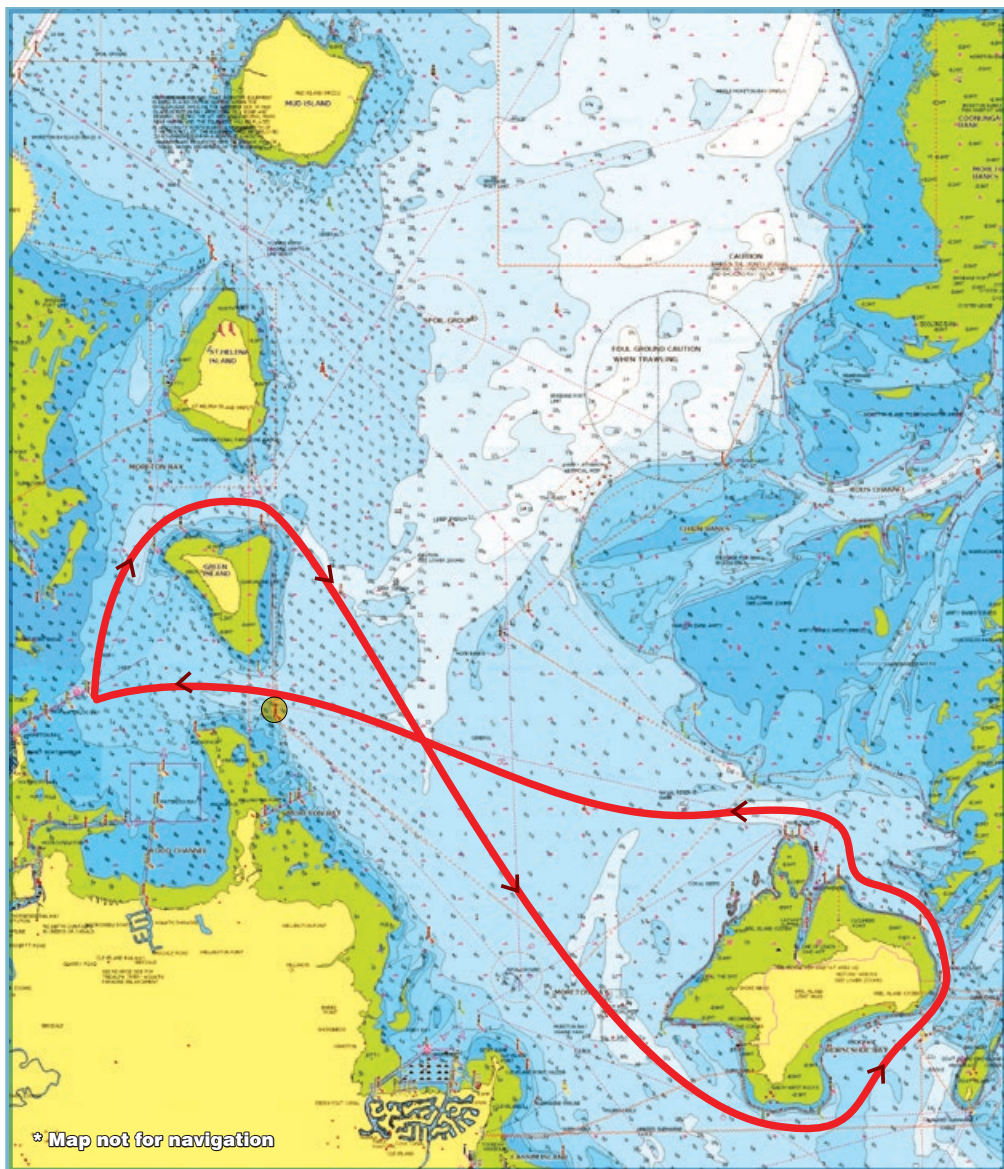
Peel Island West Racing Buoy 27°27.9'S 153°18.4'E  
Empire Point 27°29.2'S 153°16.5'E  
Huybers Beacon 27°26.9'S 153°14.7'E



# WYNNUM MANLY SAILING CLUB

## COURSE S - 24nm

Green Island to Starboard, Peel Island to Port, Huybers to Port



Huybers Beacon 27°26.9'S 153°14.7'E



# The Captain's Parrot Café

@WMYC



The Captain's Parrot Café is located on the sun drenched, harbour side patio of the Wynnum Manly Yacht Club.

The Café offers quality coffee, breakfast, lunch and dinner and gladly welcomes humans AND their fur-babies.

## OPENING HOURS

Mon & Tues	CLOSED
Wed & Thurs	7am - 2pm
Friday	7am - 8pm
Sat & Sun	7am - 5pm*

\*Paul & Pinky welcome event and advanced large group dinner bookings for Saturday evenings.

*"A great spot for quality coffee and a quiet breakfast in Manly!"*

*"Best dining Bayside! .. once you discover this little gem you'll be back for lunch and coffee and dinner and brunch..."*

542 Royal Esplanade, Manly, 4179 • 0431 510 090 • [www.captainsparrot.com](http://www.captainsparrot.com)  
[creativemobilekitchen@outlook.com](mailto:creativemobilekitchen@outlook.com)



**PRONTO  
MARINE**  
SERVICES

**Pleased to be sponsoring  
SAGS again in 2024**

**We are specialists in**

- ✓ **Antifouling**
- ✓ **Marine Detailing**
- ✓ **Propspeed Application**

- ▼ Prevent marine growth
- ▼ Save on maintenance costs in the future
- ▼ Protect against corrosion
- ▼ Maintain fuel efficiency
- ▼ Increase speed
- ▼ Improve handling

Call us on **0426 004 620** to discuss your maintenance needs

Email us at [info@prontomarineservices.com.au](mailto:info@prontomarineservices.com.au)

Visit our website: [www.prontomarineservices.com.au](http://www.prontomarineservices.com.au)



# WYNNUM MANLY SAILING CLUB

## ST HELENA CUP - Saturday



## Wynnum Manly Yacht Club Marina Slipway (07) 3396 4639

- Generous discounts to club members and berth owners
- Self-help opportunities: Owners can carry out boat work if they wish.
- Four boat trolleys for boats up to 19 metres in length.
- Full washdown facility.
- Lockable storage for tools and equipment.
- All planks, trestles and ladders provided free.
- Dustless sanding and other equipment available for hire.
- Covered eating area with BBQ, drink machine, free tea and coffee facilities.
- Professional boat repairers and chandlery nearby.

(Short term casual memberships available for non-members).



# WYNNUM MANLY SAILING CLUB

## ST HELENA CUP - Sunday



## SUPPORTING OUR SISTER CLUB



DARLING POINT SAILING SQUADRON is based on Norfolk Point Manly with regular Sunday sailing during the Summer season (September to April) and monthly sailing during the Winter season (May to August).

They offer Learn to sail courses for teens and children on Sunday mornings and a sailing pathway for those who wish to continue to afternoon racing for the competitive sailors.

Email: [dpssorg@gmail.com](mailto:dpssorg@gmail.com) Website: <https://www.dpss.org.au/>



Proudly sponsoring the WMSC Short Handed Series and the St Helena Cup

# Ullman Sails™

Phone: 07 3348 7245 or 0409 057 689

Email: [andrew@ullmansails.com.au](mailto:andrew@ullmansails.com.au)

112 Glenora St, Wynnnum 4178

## Racing, Cruising, New Sails, Repairs, Covers



**GANGWAY**  
Empowering Women in Sailing



# OCEANIC

## MARINE RISKS

YOUR LOCAL **MARINE INSURANCE**  
EXPERTS.

Since 1986, Oceanic Marine Risks has specialised in finding insurance solutions for Recreational Boats, Commercial Hull, Marine Trades, Marinas, Diving & Underwater Equipment and more.

*"This level is personalised service gives me confidence my insurance is in safe hands"*

Talk to us about your:



**Recreational Boat Insurance**



**Marine Trades Liability**



**Commercial Hull & Liability**

DISCOVER OUR PERSONALISED INSURANCE  
BROKING SERVICE TODAY, CALL



**Fiona Morris**



**0417 075 196**



**[www.oceanicmarinerisks.com.au](http://www.oceanicmarinerisks.com.au)**

Oceanic Marine Risks Pty Ltd ABN 52 660 176 303 is a Corporate Authorised Representative (CAR 1297607) of Regional Insurance Brokers. ABN 45 010 723 967, AFSL 244330.

