



SAILING INSTRUCTIONS

FOR

The Wynnum Manly Sailing Club Founders Trophy Regatta 2024



Incorporating:

- Division 1: Faster Monohulls, including all IRC, CBH and AMS entries
- Division 2: Slower Monohulls
- Division 3: Trailer Sailers and small mono hulls
- Division 4: Multihulls

Race days: Saturday 17th and Sunday 18th of February

Organising Authority: Wynnum Manly Sailing Club (wmsc@wynnummanlysailingclub.com.au)
Venue: Wynnum Manly Yacht Club, 510-542 Royal Esplanade, Manly office@wmyc.com.au



SAILING INSTRUCTIONS (SI)

1. RULES

- 1.1 The notation [NP] in a rule of sailing instructions (Sis) means that a boat may not protest another boat for breaking that rule. This changes RRS 60.1(a).
- 1.2 The notation '[DP]' in a rule means that the penalty for a breach of the rule may, at the discretion of the protest committee, be less than disqualification.
- 1.3 The regatta is governed by the rules as defined in The Racing Rules of Sailing 2021-2024.
- 1.4 For boats entered in IRC class, the 2023 IRC Rule (Parts A, B and C) will apply.
- 1.5 For boats entered in AMS class, the current AMS rules will apply.
- 1.6 The Notice of Race, as modified by these Sailing Instructions (SI) form part of the rules.

2. CHANGES TO SAILING INSTRUCTIONS

- 2.1 Any change to the sailing instructions will be posted before 8:00 on the day it will take effect, except that any change to the schedule of races will be posted by 18:00 on the day before it will take effect.

3. COMMUNICATIONS WITH COMPETITORS

- 3.1 Notices to competitors will be posted as a news item at www.wynnummanlysailingclub.com.au. Notices may be emailed to competitors as a courtesy.
- 3.2 The Race Officer will perform the race briefing on Saturday 17 Feb and Sunday 18 Feb at 9:00 in the Wynnum Manly Yacht Club's clubhouse.
- 3.3 The race office is located at the northern end of the WMYC offices at 542 Royal Esplanade Manly, email wmsc@wynnummanlysailingclub.com.au
- 3.4 On the water, the race committee will monitor and communicate with competitors on VHF radio channel 72.
- 3.5 Any emergency radio communication (MAYDAY, PAN PAN or SECURITE) should take place on VHF Channel 16.
- 3.6 During racing events, the Race Officer (RO), or another designated official, will carry a mobile that can be called for urgent matters only. Skippers and crew can contact this number when the RO cannot be contacted through other means like radio contact.
The contact number will be made available at the briefing. An example situation would be when a yacht retires from a race and can't make radio contact with the start boat.

4. CODE OF CONDUCT

- 4.1 [DP] [NP] Competitors and support persons shall comply with reasonable requests from race officials.

5. SIGNALS MADE ASHORE

- 5.1 Signals made ashore will be displayed at WMYC Clubhouse flagpole, 542 Royal Esplanade Manly.
- 5.2 When flag AP is displayed ashore, '1 minute' is replaced with 'not less than 45 minutes' in Race Signals AP.



6. SCHEDULE OF RACES

6.1 Equipment inspection and event measurement

Date	From	To
TBA	TBA	TBA

6.2 Date and times of events

Date	Event	Time / Warning Signal
17/02/24	Sign on and Briefing	9:00 – 9:30
17/02/24	Warning signal race 1 – all Divisions	10:55
18/02/24	Sign on and Briefing	9:00 – 9:30
18/02/24	Warning signal race 2	10:25
18/02/24	Presentation	Not before 16:30

7. RACING AREA

7.1 The location of the regatta is Moreton Bay: South of the Main Channel, West of the Rous Channel and North of Coochiemudlo Island.

8. COURSES

8.1 Course Descriptions:

Date	Division	Length	Course Description
17/02/24	1 and 4	22 NM	start - Lockyer to port - Green Island East Racing Buoy to port - St Helena Red to starboard - Mud Island East cardinal to starboard - Hope Banks Racing Buoy to starboard - Empire Point to starboard - Huybers to port - finish
17/02/24	2	18 NM	start - Lockyer to port - Green Island East Racing Buoy to port - St Helena Red to starboard - Mud South Green to starboard - Hope Banks Racing Buoy to starboard - Peel West Racing Buoy to starboard - Huybers to port - finish
17/02/24	3	15 NM	start - Lockyer to port - Green Island East Racing Buoy to port - St Helena Red to starboard - Mud Island South Green to starboard - Hope Banks Racing Buoy to starboard - Lockyer to starboard - finish
18/02/24	1 and 4	19 NM	Start - Green Is to starboard - St Helena Sth to port - St Helena red to starboard - Hope Banks Racing Buoy to starboard - Cleveland yellow to starboard - Huybers to port - finish
18/02/24	2	15 NM	start, Green Is to starboard - St Helena Sth to port - St Helena red to starboard - Hope Banks Racing Buoy to starboard - Empire Point to starboard - Huybers to port - finish
18/02/24	3	12 NM	start, Green Is to starboard - Hope Banks Racing Buoy to starboard - Empire Point to starboard - Huybers to port - finish

9. MARKS

9.1 For all races, navigational marks must be observed, except, where indicated by the course instructions.

9.2 The starting and finishing marks may be red, orange or yellow inflatable boys.



10. OBSTRUCTIONS

- 10.1 No objects as yet identified.

11. THE START

- 11.1 Races will be started using RRS 26.
- 11.2 The start will be approximately 1.5 NM east of the Manly Harbour entrance beacons.
- 11.3 The starting line is between a staff displaying an orange flag on the starting boat at the starboard end and the port-end starting mark. An inner distance mark, if laid, will be considered to be an extension of the starting boat. Boats shall not sail between the inner distance mark and the starting boat.
- 11.4 [NP][DP] Boats whose warning signal has not been made shall avoid the starting area during the starting sequence for other races.
- 11.5 If any part of a boat's hull is on the course side of the starting line during the two minutes before her starting signal and she is identified, the race committee will attempt to broadcast her sail number on VHF channel 72. Failure to make a broadcast or to time it accurately will not be grounds for a request for redress. This changes RRS 62.1(a).
- 11.6 A boat that does not start within fifteen minutes after her starting signal will be scored Did Not Start without a hearing. This changes RRS A5.1 and A5.2.

12. THE FINISH

- 12.1 The location of the finish is the same as the start unless a shortening of the course is announced on VHF channel 72. The finishing line will be between a staff displaying an orange flag on the finishing boat at the starboard end and an orange or yellow inflatable boy.

13. PENALTY SYSTEM

- 13.1 RRS 44.1 is changed so that the Two-Turns penalty in rule 44.1 is replaced by a One-Turn penalty.

14. TIME LIMITS

- 14.1 The time limit for finishing each race is as follows: 17:00 for race 1 and 15:30 for race 2. Boats not finished by this time will be scored Did Not Finish without a hearing. This changes RRS 35, A4 and A5.

15. HEARING REQUESTS

- 15.1 For each class, the protest time limit is 90 minutes after the last boat in that class finishes the last race of the day or the race committee signals no more racing today, whichever is later. See NOR
- 15.2 Hearing request forms are available from the club website at www.wynnummanlysailingclub.com.au
- 15.3 Notices will be posted no later than 24 hours after the protest time limit to inform competitors of hearings in which they are parties or named as witnesses. Hearings will be held at a time and place as advised in the relevant notice.

16. SCORING

- 16.1 The scoring system is as follows: The low points system shall be used.
- 16.2 A boat's series score shall be the total of her race scores.
- 16.3 One race is required to complete a series.
- 16.4 Rule A5.3 applies.



17. [NP][DP] SAFETY REGULATIONS

- 17.1 All competitors are reminded of their General Safety Obligation and their obligation to abide by it both on and off the racecourse. Your General Safety Obligation can be summed up thus: You must ensure your boat is safe, properly equipped and crewed, and operated in a safe manner.
- 17.2 By signing on, the skippers agree to comply with AS SR Part 1, Category 5.
- 17.3 All vessels are reminded that *The Racing Rules of Sailing (RRS)* apply only between those yachts that are participating in the event, for the duration of the event. Should interaction occur with non-participating ships, the *International Regulations for Preventing Collisions at Sea 1972 (COLREGS)* apply.
- 17.4 Vessels must observe a 20-metre exclusion zone around each of the following Aids to Navigation being Jay's Reef Boy, Hope Banks Racing Buoy Beacon, Norman J Wright Beacon, Crawford James Pattison Beacon, Red Beacon NE Green Island, South Cardinal Beacon St Helena Island.
- 17.5 All boats will provide full crew details via sailsys.
- 17.6 All race related radio communications are on channel 72.
- 17.7 All boats will sign in by radio before the warning signal.
- 17.8 By signing in, the skipper agrees to comply with the rules as detailed in the NOR and SI.
- 17.9 By signing in a Skipper acknowledges RRS3: see 26.1
- 17.10 All boats will comply with the Transport Operations (Marine Safety) Act 1994 and subordinate Regulations.
- 17.11 Boats are not to impede commercial shipping.
- 17.12 All marine incidents must be reported to the Race Officer (RO), in addition to the regulatory requirements to report marine incidents to Maritime Safety Queensland.
- 17.13 A boat that retires from a race shall notify the race committee at the first reasonable opportunity.

18. REPLACEMENT OF CREW OR EQUIPMENT

- 18.1 [DP] [NP] Substitution of damaged or lost equipment is not allowed unless authorised in writing by the race committee. Requests for substitution shall be made to the committee at the first reasonable opportunity, which may be after the race.

19. EQUIPMENT AND MEASUREMENT CHECKS

- 19.1 A boat or equipment may be inspected at any time for compliance with the class rules, notice of race and sailing instructions.
- 19.2 [DP] [NP] When instructed by a race official on the water, a boat shall proceed to a designated area for inspection.

20. OFFICIAL VESSELS

- 20.1 Official vessels will display a WMSC burgee.

21. RUBBISH DISPOSAL

- 21.1 Rubbish must be kept on board competing boats and disposed of when ashore.

22. COMMERCIAL FISHING APPARATUS

- 22.1 No commercial fishing apparatus to be removed from the water or moved without the consent of the owner. Any issues arising, contact the district manager Queensland Boating and Fisheries Patrol.



23. RADIO COMMUNICATION

- 23.1 Competitors are expected to have a dual watch VHF radio and be monitoring both channel 16 and channel 72.
- 23.2 Except in an emergency, no radio transmissions are to be made by competitors while any division is under Starter's Orders.
- 23.3 [NP] [DP] Except in an emergency, a boat that is racing shall not make voice or data transmissions and shall not receive voice or data communication that is not available to all boats.

24. SIGN ON

- 24.1 All yachts will sign on with RACE CONTROL BY RADIO VHF Channel 72 prior to the warning signal for the start on both days. Failure to sign on will result in the yacht being scored DNS. At this time all yachts will advise the number of crew on board and their sail number.

25. SIGN OFF

- 25.1 Yachts who are NOT returning to Manly Harbour MUST sign off via VHF Channel 72

26. DISCLAIMER OF LIABILITY

- 26.1 Competitors participate in the regatta entirely at their own risk. See RRS 3, Decision to Race. The organising authority will not accept any liability for material damage, personal injury or death sustained in conjunction with or prior to, during, or after the regatta.

27. INSURANCE

- 27.1 All skippers of any vessel participating in a race, must maintain on board and produce upon demand by the Race Committee, a copy of a current, valid Certificate of Currency with respect to the third-party property and third-party personal injury insurance with a minimum legal liability of \$10,000,000 per event or the equivalent for the vessel.

28. PRIZES

- 28.1 See NOR.

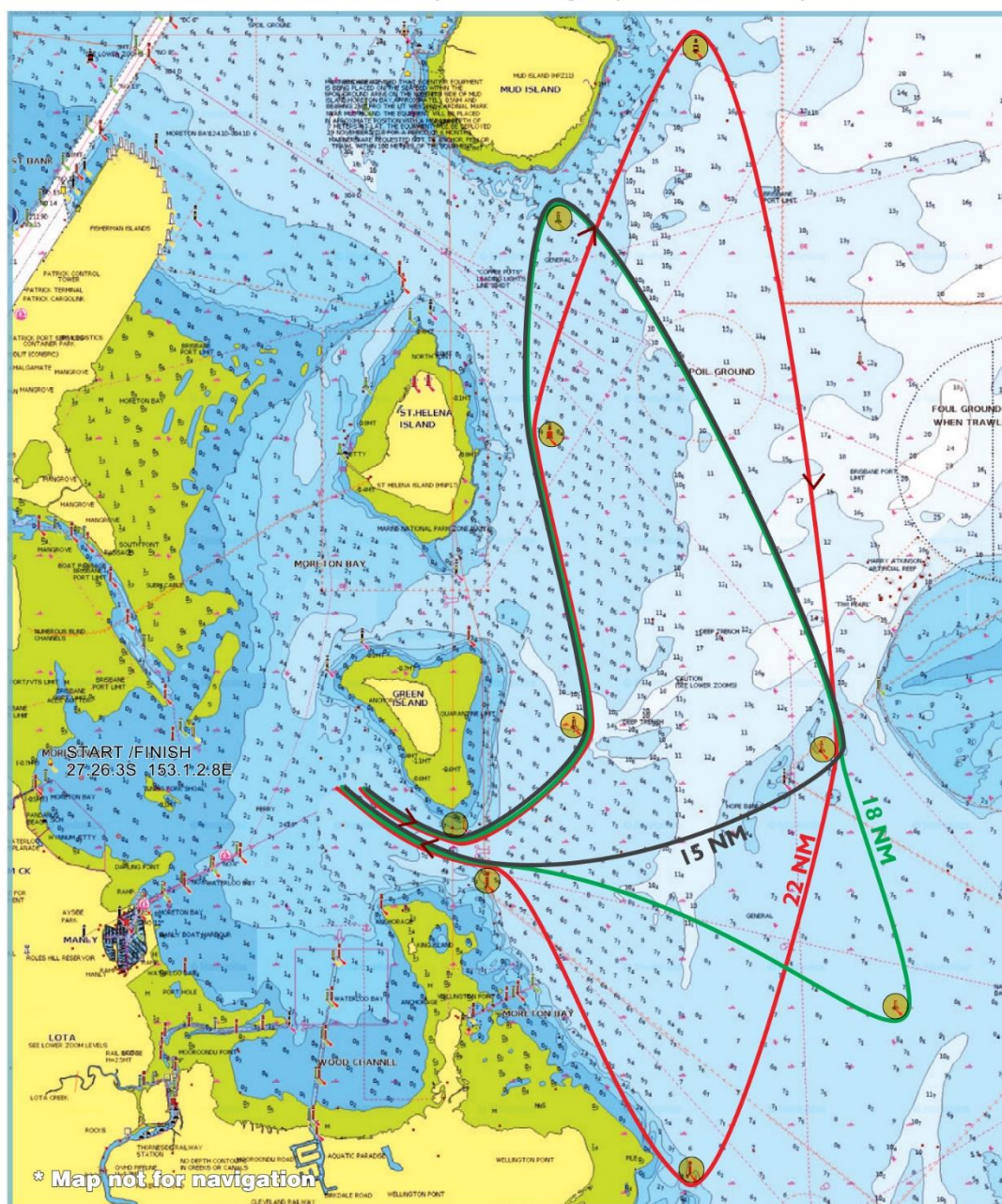
29. SPONSORS

The WMSC race committee thanks all the club volunteers as well as our club staff and the marina staff who are contributing so much effort to make this regatta a success. Thanks to the Wynnum Manly Yacht club for providing the venue and facilities for this event.



FOUNDERS CUP REGATTA - SATURDAY

DATE	DIVISION	LENGTH	COURSE DESCRIPTION
17th Feb 2024	1 & 4	22 NM	Start - Locker to port - Green Island East Racing Buoy to port St Helena Red to starboard - Mud Island East cardinal to starboard Hope Banks Racing Buoy to starboard Empire Point to starboard - Huybers to port - Finish
17th Feb 2024	2	18 NM	Start - Locker to port Green Island East Racing Buoy to port St Helena Red to starboard - Mud South Green to starboard Hope Banks Racing Buoy to starboard Peel West Racing Buoy to starboard Huybers to port - Finish
17th Feb 2024	3	15 NM	Start - Locker to port Green Island East Racing Buoy to port St Helena Red to starboard- Mud Island South Green to starboard Hope Banks Racing Buoy to starboard - Locker to starboard - Finish





FOUNDERS CUP REGATTA - SUNDAY

DATE	DIVISION	LENGTH	COURSE DESCRIPTION
18th Feb 2024	I & 4	19 NM	Start - Green Is to starboard - St Helena Sth to port St Helena red to starboard - Hope Banks Racing Buoy to starboard Cleveland yellow to starboard - Huybers to port - Finish
18th Feb 2024	2	15 NM	Start - Green Is to starboard - St Helena Sth to port St Helena red to starboard - Hope Banks Racing Buoy to starboard Empire Point to starboard - Huybers to port - Finish
18th Feb 2024	3	12 NM	Start - Green Is to starboard - Hope Banks Racing Buoy to starboard Empire Point to starboard - Huybers to port - Finish

