



## **Notice of Race & Sailing Instructions**

**Eligible Boats are invited to register for the  
Kingfisher Bay Resort Night Race Series.**

**2023-2024**

**Organising Authority Moreton Bay Boat Club Inc. (MBBC)**

**With the support of QCYC, WMSC, MCC, MBTBC**

**Race 1 – 28th October 2023  
Race 2 – 25th November 2023  
Race 3 – 24th February 2024  
Race 4 – 16th March 2024**

*The Organising Authority for the 2023-2024 Kingfisher Bay Resort Interclub Night Series is  
the Moreton Bay Boat Club Inc*

[Email: sailing@mbbc.org.au](mailto:sailing@mbbc.org.au)

### **1. Rules**

- 1.1. The regatta will be governed by the rules as defined in The Racing Rules of Sailing 2021-2024 (RRS), as modified by this Notice of Race and Sailing Instructions.

- 1.2. The prescriptions of Australian Sailing (AS) will apply, including AS Special Regulations (ASSR) Part 1, Category 5N.
- 1.3. The IRC rules Parts A, B & C will apply. The IRC Rule 22.4.4 will not apply. There will be no limitation on crew number or weight except as required for boats rated as One-Designs which will comply with IRC Rule 22.4.1.
- 1.4. The International Regulations for Preventing Collision at Sea apply at all times and replace the RRS between official sunset and official sunrise. The official time of sunset will be as printed in the "The Courier-Mail" newspaper of the day.
- 1.5. RRS 52 does not apply to the adjustment and operation of sails or to the adjustment of movable appendages on any boat.

## **2. Eligibility and Entry**

- 2.1. The series is open to all racing and cruising monohulls and multihulls that meet the requirements of ASSR Part 1, Category 5N and provide an audited Cat 5 N equipment audit form with their entry.
- 2.2. The skippers/owners shall be financial members of an AS affiliated club.
- 2.3. Eligible boats must register and pay their entry fee online [here](#)
- 2.4. Individual race entries must be received 5 days prior to the start of the race.
- 2.5. Late entries may be accepted upon payment of a late entry fee.

## **3. Divisions**

- 3.1. All divisions are subject to minimum of five entrants per race.
- 3.2. Divisions will be as follows: Monohull PHS, IRC, AMS, Shorthanded Monohulls, Multihull PHS.
- 3.3. Boats may enter any combination of Monohull PHS, IRC, AMS and Shorthanded Monohulls.

## **4. Fees**

- 4.1. Required fees are as follows:
  - a. Series entry PHS \$140.00.
  - b. Plus Series entry for IRC or AMS divisions \$20. 00 each.
  - c. Late entry fee \$20.00.
  - d. Individual race entry \$40.00 for PHS, plus \$10 for each of IRC and AMS divisions.

## **5. Advertising**

- 5.1. Boats may be required to display advertising chosen and supplied by the organising authority.

## **6. Insurance**

- 6.1. Each participating boat shall be insured with valid third-party liability insurance with a minimum cover of \$10,000,000 per incident or the equivalent. A Certificate of Currency for insurance shall be carried on board each competing boat and shall be produced on demand by the Race Committee.

## 7. Disclaimer of liability

- 7.1. Competitors participate in the regatta entirely at their own risk. See RRS Part 1 Fundamental Rules 3, Decision to Race.
- 7.2. The organising authority will not accept any liability for material damage or personal injury or death sustained in conjunction with or prior to, during, or after the regatta.
- 7.3. All those taking part in this series do so at their own risk and responsibility. The organising authority is not responsible for the seaworthiness of a boat, whose entry is accepted, or the sufficiency or adequacy of its equipment.

## 8. Safety

- 8.1. A decision to postpone, cancel or abandon any race can be made by the Race Committee.
- 8.2. Races will not be started when an official gale warning or stronger is current.
- 8.3. All crew members shall wear personal flotation devices and use ASSR category 4 compliant tethers when on deck at night and when sustained wind strength is above 25 knots.
- 8.4. When a boat is crewed by fewer than three people, all crew members shall wear personal flotation devices at all times when on deck.
- 8.5. Any competitor that sails within 500 metres of any commercial vessel may be instantly disqualified. *Redress of time* will be allowed. Please notify the Race Committee boat if redress of time will be needed. Refer to Appendix C – BRISBANE HARBOUR PROCEDURES for additional information.
- 8.6. All marine incidents must be reported to the Race Officer, in addition to regulatory requirements to report marine incidents to Maritime Safety Queensland.

## 9. Notices to Competitors

- 9.1. Any notice to competitors will be posted as News Item on the [MBBC website](#)  
[and the Kingfisher Bay Resort Night Race Series Facebook group.](#)

## 10. Changes to Sailing Instructions

- 10.1. Any change to the Sailing Instructions will be posted as News Item on the [MBBC website](#)  
[and the Kingfisher Bay Resort Night Race Series Facebook group.](#) not less than four hours before the warning signal.

## 11. Radio Communication

- 11.1. All race management radio communication will be on VHF Channel 72.
- 11.2. All yachts will sign on with Kingfisher Race Control by RADIO prior to the warning signal for the start. Failure to do so will result in the yacht being scored DNS. This changes RRS 63.1, A4 & A5. At this time all yachts will advise the number of crew on board (POB), and confirm they have provided all crew contact tracing information.
- 11.3. Any emergency radio communication (MAYDAY, PAN PAN or SECURITE) should take place on VHF Channel 16.

- 11.4. All boats must maintain a listening watch on VHF 16.
- 11.5. All boats must maintain a listening watch on VHF 12 when near the shipping channels in order that they can be communicated with by Commercial Shipping, as stated in Appendix C and detailed on the web page  
<https://www.msq.qld.gov.au/Shipping/Port-procedures/Port-procedures-brisbane>
- 11.6. All vessels must radio to Kingfisher Race Control at the marks that are listed with an asterisk (\*) in the course description. A vessel that does not call in at a mark may be disqualified. *These notifications of position are an integral part of the event management plan and must be observed. If any participant experiences communication difficulty during the event, they must make every reasonable effort to ensure their mark rounding times are made known to the committee via any means available (e.g. radio relay or mobile phone). Mobil phone contact for Race Control will be provided in the race briefing document. (see 14.2))*
- 11.7. The Start/Finish Boat “Kingfisher Race Control” will act as the radio communication vessel for the duration of the race or until otherwise advised. If you cannot contact “Kingfisher Race Control” arrange for another boat to relay your message.
- 11.8. Except in an emergency, and other than detailed in these instructions, a boat shall neither make radio transmissions while racing nor receive radio communications not available to all boats. This restriction also applies to mobile phones and computers.

## 12. Class Flags

- 12.1. Class flags will be:

<i>Class</i>	<i>Flag</i>
Monohull	Numeral 1
Multihull	Numeral 2

## 13. Measurement

- 13.1. Each boat entered in the IRC/AMS divisions shall produce a valid IRC/AMS rating certificate prior to the start of the first race entered. The certificates must be current for the first race.
- 13.2. Any changes to a boat’s rating certificate shall be submitted prior to the start of the first race to which the change applies.
- 13.3. The Race Committee reserves the right to check any measurements it deems necessary.

## 14. Schedule

- 14.1. Dates:
- Race 1 – 28th October 2023
  - Race 2 – 25th November 2023
  - Race 3 – 24th February 2024
  - Race 4 – 16th March 2024
- 14.2. **A race briefing will be published** as News Item on the [MBBC website](#) and the [Kingfisher Bay Resort Night Race Series Facebook group](#) no later than 1200 on day of racing. The race briefing will include a contact mobile phone number for the Race Officer, who will be available by phone to answer any questions between 1200 and 1400 on day of racing.

14.3. Skippers are required to provide full crew details, including emergency contact information via Sailsys. <https://sailsys.tawk.help/category/crew-management>"

14.4. Any changes to the race briefing will be announced by radio at approximately 1445 on day of racing.

14.5. The scheduled time of the warning signal on each day of racing will not be before:

1455 - Monohulls 1510

– Multihulls

## **15. Courses**

15.1. The courses are described in Appendix A.

15.2. Courses will not be shortened. This changes RRS 32.

## **16. Marks**

16.1. The Marks are described in Appendix B.

16.2. Vessels must observe a 20 metre exclusion zone around the following Aids to Navigation: Jeay's Reef Buoy (Mud Island North Cardinal). Fisheries Beacon, Hope Banks Beacon.

## **17. The Start**

17.1. The starting line will be between a staff displaying an orange flag or shape on the Race Committee boat and the Mud Island West Starboard Lateral buoy. The start direction will be in the direction of the course to the first mark of the course.

17.2. The Race Committee may nominate an alternate start mark and / or lay a start buoy. The Race Committee will advise all competitors of the start location and marks by radio.

17.3. A boat starting later than 30 minutes after her starting signal will be scored Did Not Start without a hearing. This changes RRS A4 & A5.

17.4. If any part of a boat's hull, crew or equipment is on the course side of the starting line during the two minutes before her starting signal and she is identified, the Race Committee will attempt to broadcast her sail number on VHF channel 72. Failure to make a broadcast or to time it accurately will not be grounds for a request for redress. This changes RRS 62.1(a).

17.5. Should one boat appear at the starting line for the race, the boat is entitled to sail the course and thereafter be declared the winner of the race.

17.6. A boat that is starting late may use her engine to get to the starting area. Any such boat must cease to use her engine before starting and at least 200 metres from the starting line. A boat shall report such circumstances to the Race Committee after finishing the race. The Race Committee will decide whether the boat shall be scored as a starter. This alters RRS 42.

17.7. The race committee boat to notify Brisbane VTS on VHF channel 12 or 33051700 when first vessel approaches navigable channel and when last vessel has cleared the navigable channels.

## **18. The Finish**

18.1. The finish line will be between a staff displaying an orange flag on the Race Committee boat and the Mud Island West Starboard Lateral buoy for the other end of the finish line.

- 18.2. The finish direction will be in the direction from the last mark of the course to the finish line.
- 18.3. Boats should attempt to contact the finish boat by radio when approaching the line and illuminate sail numbers so that boats can be identified.
- 18.4. Unless otherwise advised, the Race Committee boat will be anchored approximately 100 meters south of the Mud Island West Starboard Lateral.
- 18.5. The race committee boat to notify Brisbane VTS on VHF channel 12 or 33051700 when first vessel approaches navigable channel and when last vessel has cleared the navigable channels.
- 18.6. If the Race Committee boat is no longer on station, boats shall pass within 50 meters of the Mud Island West Starboard Lateral buoy. The boat's finish time is to be taken when the boat is due south of the mark.
- 18.7. When there is no Race Committee boat on station at the finish, boats are required to use mobile phone to text the Race Officer with a message advising the boat name and finish time.

## **19. Penalty system**

- 19.1. During daylight hours RRS 44.1 will apply.
- 19.2. Between Sunset and Sunrise, a boat that concedes a penalty is required to complete and lodge a declaration to the Race Officer by text message when finishing and a 3 point penalty will be applied to their score. This changes RRS 63.1, A4 and A5.

## **20. Retirement**

- 20.1. A boat that retires from a race shall notify the Race Committee via radio or mobile text to the Race Officer

## **21. Scoring and results**

- 21.1. The Low Point System of RRS Appendix A will apply.
- 21.2. One (1) race is required to be completed to constitute a series.
- 21.3. Each boat's series score shall be the total of her race scores.
- 21.4. Arbitrary handicaps (THCF) will be at the sole discretion of the Race Committee,
- 21.5. Any boat that has not paid the series entry fee by the start of the first race may not be counted in the series points score.
- 21.6. Any boat that has not paid for an individual race 3 days prior to the race they wish to enter, may have their result regarded as a "did not start".
- 21.7. Results will be posted to the [MBBC website](#) and [the Kingfisher Bay Resort Night Race Series Facebook group](#)
- 21.8. Apply for group membership by clicking Join on the group link above.
- 21.9. Results will also be emailed to competitors who provide an email address.

## **22. Protests and Requests for Redress**

- 22.1. Immediately after finishing a boat is required to contact the Race Officer and inform them of its intention to protest or request for redress.

- 22.2. Protest forms are available on the QCYC website <https://www.qcyc.com.au/club-sailing-racing/summer-series-gold-cup-and-club-championship/> Protests and requests for redress or reopening shall be delivered by email to [sailing@mbbc.org.au](mailto:sailing@mbbc.org.au) within 24 hours. Skippers will advise the Race Officer by SMS text message that they have lodged a protest of request for redress.
- 22.3. Within 48 hours of the expiry of the protest time limit, competitors who are parties to a hearing or named as witnesses will be notified by phone and informed of the location and time of the hearing.
- 22.4. Notices will be posted as a news item on the [MBBC website](#) no later than 48 hours after the protest time limit to inform competitors of hearings in which they are parties or named as witnesses. The notice will include the location of the protest room and the time of the hearing. It is the sole responsibility of the parties to the protest to present themselves to the hearing with such witnesses as they may require.
- 22.5. Breaches of instructions 16, 17 & 18 will not be grounds for a protest by a boat. This changes RRS 60.1(a). Penalties for these breaches may be less than disqualification if the protest committee so decides.
- 22.6. Requests for redress based on a protest committee decision shall be delivered no later than 48 hours after the decision was posted. This changes RRS 62.2

## **23. Presentation and trophies**

- 23.1. It is intended that all entry fees will be allocated to fund prizes and trophies.
- 23.2. There will be prizes for the individual races and for the series.
- 23.3. Other prizes (including for short-handed sailing) will be presented at the discretion of the Race Committee. The awarding of any prizes shall be subject to the decision of the outstanding protests and appeals.
- 23.4. The gala presentation night will be held at Moreton Bay Boat Club. The date is to be determined, as close as possible after the last race. Bookings are essential. Further advice will be emailed closer to the date.

## **24. Further information**

Enquiries should be directed to: The Race Organizer: [sailing@mbbc.org.au](mailto:sailing@mbbc.org.au)  
Enquiries about entry fees and entry process to [wmyc@wynnummanlysailingclub.com.au](mailto:wmyc@wynnummanlysailingclub.com.au)

## **25. Appendix A: Courses**

### **Race 1**

**Start Line** at Mud Island West Starboard Lateral buoy

Western Coffee Pot - round to **Starboard**

Brisbane Road's West - round to **Port**

\* Fisheries Beacon - round to **Starboard**

\* Pearl Channel - round to **Port**

\* North Reef - round to **Port**

Brisbane Road's West - round to **Starboard**

\* Western Coffee Pot - round to **Port**

**Finish** at Mud Island West Starboard Lateral buoy.

### **Race 2**

**Start Line** Mud Island West Starboard Lateral buoy

Mud Island West Cardinal – pass to **Starboard 20**

Mud Island North Cardinal - round to **Starboard**

Mud Island East Cardinal – round to **Starboard**

Hope Banks Racing buoy – round to **Starboard**

\* Cleveland Yellow - round to **Port**

Peel Island – all marks to **Port**

\* Hanlon Light - leave to **Port**

Hope Banks Racing buoy – round to **Starboard**

St Helena East Flashing Red - leave to **Port**

**Finish** at Mud Island West Starboard Lateral buoy

### **Race 3**

**Start Line** Mud Island West Starboard Lateral buoy

St Helena Red Buoy – round to **Port**

Mud Island East Cardinal Mark - pass to **Port**

\* **M8** - round to **Port**

\* Fisheries Beacon - round to **Port**

Brisbane Road's West - round to **Starboard**

\* Western Coffee Pot - round to **Port**

**Finish** at Mud Island West Starboard Lateral buoy.

### **Race 4**

**Start Line** Mud Island West Starboard Lateral buoy

Mud Island North Cardinal - round to **Starboard**

Mud Island East Cardinal – round to **Starboard**

\* Hope Banks Racing buoy - round to **Port**

\* **M8** – round to **Port**

Brisbane Road's West - round to **Port**

\* Western Coffee Pot - round to **Port**

**Finish** at Mud Island West Starboard Lateral buoy.



## 26. Appendix B: Marks

### Designated Marks used in Inter Club Night Race Series

<i>Description</i>	<i>Approximate Position</i>	
Mud Island South, Starboard Lateral (Fl G 2.5s)	27°21.43S	153°15.35E
Mud Island West, Starboard Lateral (Fl G 2.5s)	27°20.53S	153°13.60E
Mud Island West Cardinal (Q (9) 15s)	27°19.9S	153°13.9E
Mud Island North Cardinal (Jeays Reef Buoy) (Q)	27°18.8S	153°14.95E
Mud Island East Cardinal (Q (3) 10s)	27°20.0S	153°16.6E
Brisbane Road's West (Fl(2) 6s)	27°17.0S	153°11.7E
Fisheries Beacon (Fl Y(4) 10s)	27°19.4S	153°06.4E
Pearl Channel Beacon (aka South West Spit) (Fl R 2.5S)	27°11.5S	153°13.0E
North Reef (aka Castlereagh Point Beacon) (Fl G 4s)	27°11.0S	153°07.9E
Brisbane Channel beacon No.11 (Green) (aka Western Coffee Pot Beacon or River Entrance Channel) (Fl G 4s)	27°19.9S	153°11.5E
Cleveland Yellow (Fl Y 3s)	27°30.9S	153°18.2E
Hanlon Light Beacon (Fl R 6s)	27°28.2S	153°21.0E
Hope Banks Racing Buoy LFL 10s NB	27°25.8S	153°17.76E
St Helena Red Beacon - Red Buoy off East Side (Fl R 2.5s)	27°23.2S	153°15.2E
M8 Port Lateral Beacon (Fl R 2.5s)	27°12.092S	153°17.212E

NB See Notice to mariners [here](#)

## 27. Appendix C - BRISBANE HARBOUR PROCEDURES

The Port of Brisbane is closely regulated. Competitors are expected to be familiar with the following regulations and Port procedures:

3.3.8 Recreational vessels reporting. A recreational ship equipped with VHF radio is required to maintain a listening watch on VHF channel 16 and either channel 12 or 13 depending on its area of operation.

Between the pilot boarding ground at Point Cartwright (Mooloolaba) and Bretts wharf, a recreational ship fitted with a VHF radio must maintain a listening watch on VHF channel 12 prior when navigating in, or near a shipping channel. When operating in and along a shipping channel, the recreational ship should navigate on the outer edge of the channel.

For reasons of safety, a recreational ship should only cross a shipping channel at recommended locations and at 90° to the channel (refer to [MSQ Boating Maps](#), formerly Beacon to Beacon, Guides for recommended crossings).

Additionally Participating vessels must keep at least 1km clear of ship to ship transfer vessels anchored at STS 1 anchorage.

Approx. Lat 27°17' S Long 153°17' E (north of Mud island).

Full section available at URL below

PDF DOWNLOAD OF RELEVANT SECTION AVAILABLE AT URL BELOW:

<https://www.msq.qld.gov.au/Shipping/Port-procedures/Port-procedures-brisbane>

## **28. Appendix D - Emergency Contacts**

### **Shipping Inspectors & Enforcement Officers – VHF CH 13**

- Brisbane Water Police – 3895 0333
- Boating and Fisheries Patrol – 3330 4210
- MSQ Operations – 3632 7500 – A/H 3305 1700
- MSQ Regional Harbour Master – VHF CH 13 VHF CH 12 see VHF coverage map - 3632 7500
- Brisbane Vessel Traffic Services – (VTS Brisbane) VHF CH 12 and 16 and ph 3305 1700
- Vessel Traffic Manager – 3305 1704

### **Emergency Services**

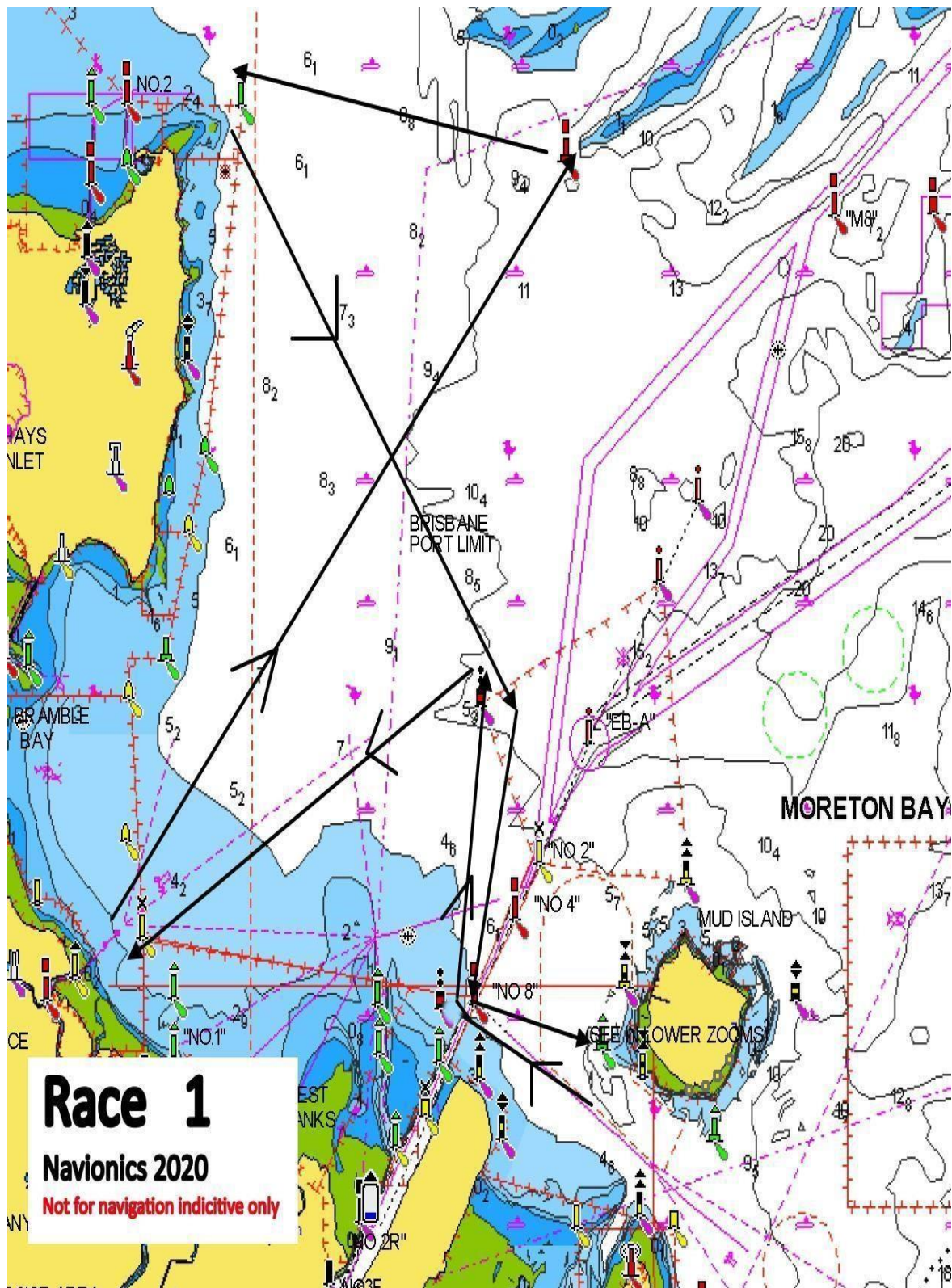
- If you dial 000, be prepared to give GPS coordinates and remember to state you are in Moreton Bay in Queensland.
- Queensland Ambulance Service (Non Emergency) – 13 74 68
- Fire & Rescue Brisbane Regional (Non Emergency) – 3635 1906
- Wynnum District Water Police - 3895 0333
- VMR Sandgate - VMR401 monitors VHF 16, 21, 63, 67, 73 & 81 from 0600 to 1700 weekends
- VMR Sandgate - Emergency After Hours Phone 0428 022 881
- CoastGuard Brisbane (Manly) – VMR402 monitors VHF 16, 21, 63, 67, 73 & 81 from 0600 to 1800 weekends
- CoastGuard Brisbane (Manly) – Emergency After Hours Phone 0404 466 000
- CoastGuard Redcliffe – VMR403 monitors VHF 16, 21, 63, 67, 73 & 81 from 0400 to 2000 weekends - phone 3203 5522
- Australian Sailing (not open weekends) (Manly) – 3393 6788

### **Brisbane Port Procedures and Information for Shipping**

<https://www.msq.qld.gov.au/Shipping/Port-procedures/Port-procedures-brisbane>

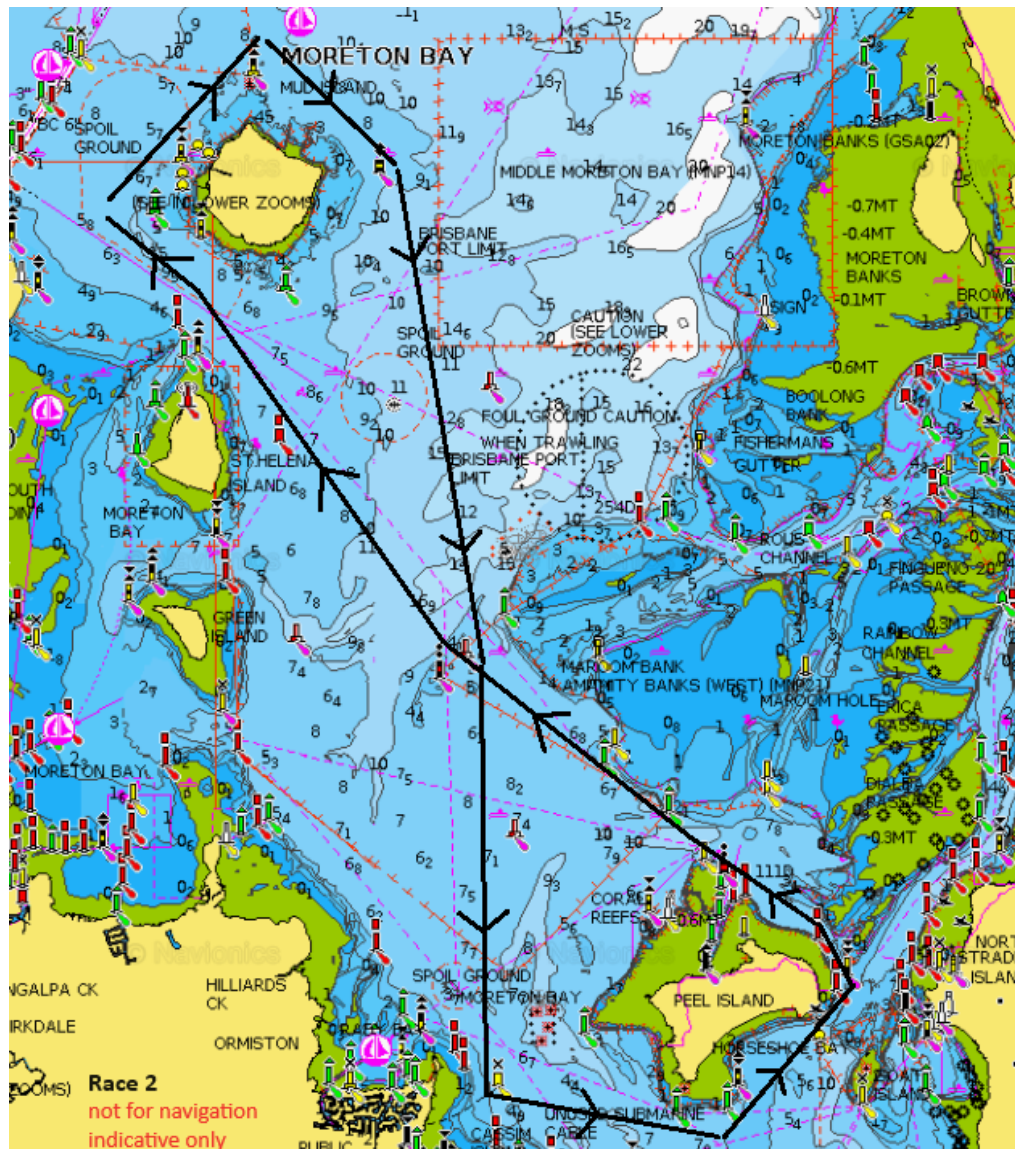
## 29. Appendix F - Chartlets

### RACE 1

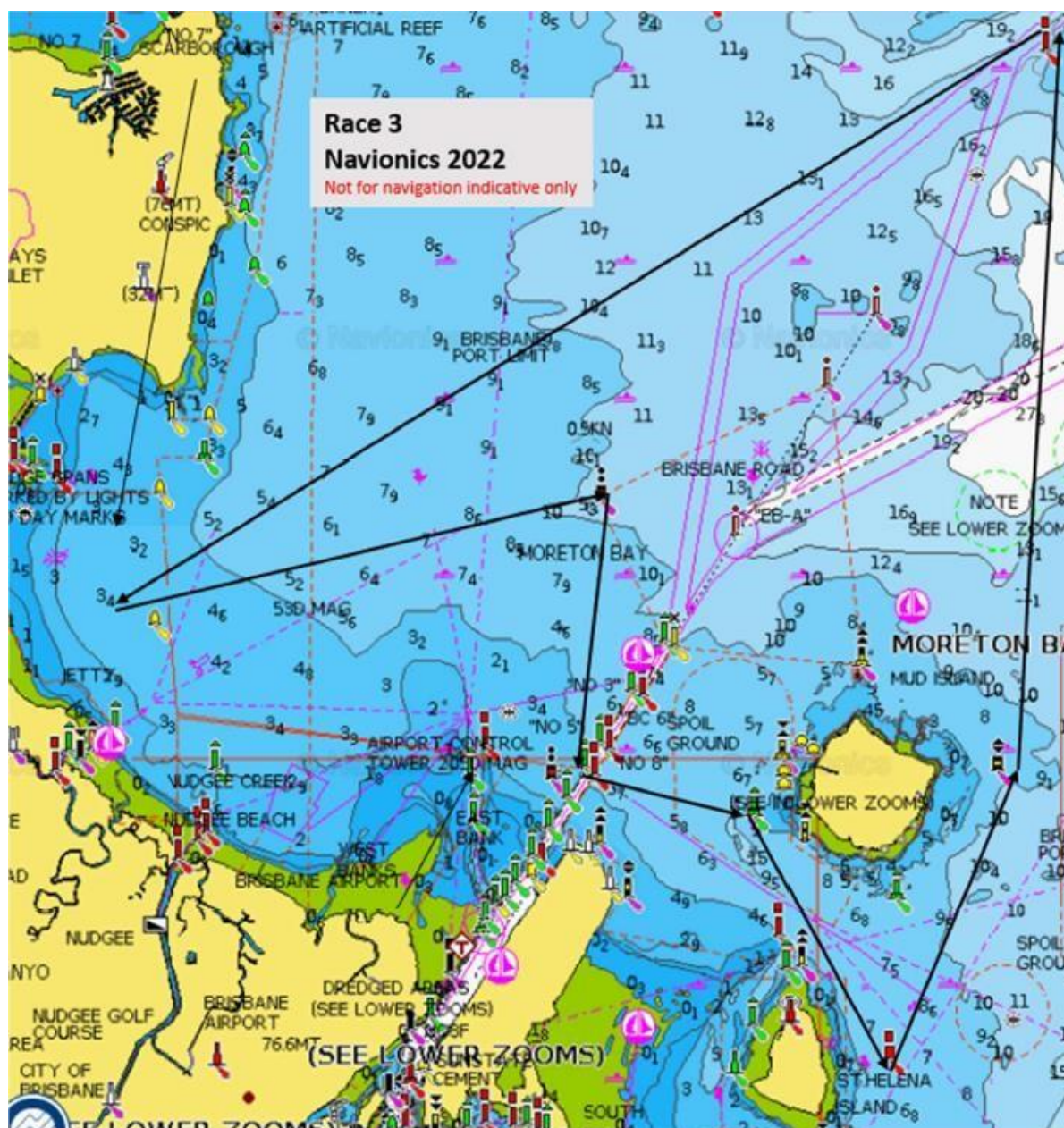




## RACE 2



## RACE 3





## RACE 4

