



# Twofold Bay Yacht Club

*The home of deep water sailing on the Sapphire Coast*



# HANDBOOK 2019-2020



## DISCOVERY PARKS – EDEN

Beautiful Family Park

Set on the magnificent shores of Twofold Bay, Discovery Parks – Eden has a range of accommodation options to suit every budget. Whether you're looking for the perfect base before your next sailing trip or somewhere for fun for the family to stay, this beach front holiday park has something for everyone.



Pet friendly on sites & selected cabins.

Disabled & family bathrooms

---

731 Princes Highway, Boydtown via Eden NSW 2551

[eden@discoveryparks.com.au](mailto:eden@discoveryparks.com.au)

**DISCOVERYHOLIDAYPARKS.COM.AU OR FREECALL 1800 631 006**

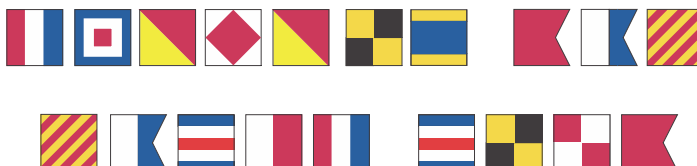


# TWOFOLD BAY YACHT CLUB INCORPORATED

2019 - 2020

## HANDBOOK (INCLUDES NOTICE OF RACE & SAILING INSTRUCTIONS)

PO Box 381 Eden NSW 2551  
[www.twofoldbayyc.sailing.org.au](http://www.twofoldbayyc.sailing.org.au)



# RON DOYLE MOTORS



mazda



NISSAN



ISUZU

**30 YEARS SERVICING OUR COMMUNITY  
WITH QUALITY NEW & USED CARS**

*Easy finance for approved customers  
Spare parts & accessories  
Service department*

113 Princes Hwy, Eden NSW 2551

**Phone: 02 6496 1420**



Twofold Bay Yacht Club would like to acknowledge the **NSW Office of Sport's** generous support this year in helping to fund the club's purchase of a **Laerdal Heart Start AED** (Automatic External Defibrillator) ably supplied by **Surf Life Saving NSW**.

This **AED** is wall mounted immediately inside the

front door of the clubhouse. All club members are strongly encouraged to thoroughly acquaint themselves with its location and correct usage.





## Contents...

4. Commodore's Message
5. 2019-2020 General Committee
7. TBYC Membership Fees
8. TBYC Club Location & Facilities
9. Balance Sheet
11. 2018-2019 Season Results
12. Twofold Bay Yacht Club Regatta
12. Use of Club Dinghies
13. Race Management
15. Emergency Plan & Emergency Phone Numbers
16. Risk Warning
17. Risk Management
19. Insurance, Indemnity, Disclaimer
22. Australian Sailing Special Regulations, Category 6 Checklist
24. Officer of the Day Duties
25. 2019 - 2020 Sailing Program
28. Notice of Race
30. Sailing Instructions
39. Courses To Be Sailed
42. Course Maps

This publication produced by the Twofold Bay Yacht Club ©2019  
Printed by Carbon Copy Printing, 37b Toalla Street,  
Pambula NSW 2549. Phone: (02) 6495 7469



## Commodores Message



Thank you to all outgoing committee members and particularly to those who have signed up again to support and promote Twofold Bay Yacht Club. A special thanks to Rod Van Berkel as 2017-2019 Commodore and Aleks Konjevic as Treasurer for so ably guiding us in continuing to be solvent. To Robyn Malcolm whom is unstinting in her commitment to the

Club in so many areas beyond Club Secretary. John Balfour our remarkably composed handicapper continues as Vice Commodore. Thanks again to all.

Last Season was a successful racing season with great racing and generosity of spirit from all competitors.

Junior and after school sailing was again endlessly entertaining with several after school sailors going on to race in the keelboats in Sunday races.

The Regatta was down on competitors , but in 2020 we will be hosting the International Flying Dutchman Nationals as part of our annual Regatta which will help boost competitor numbers and is sure to be as much fun as the 2018 Regatta when we also had the Flying Dutchman Nationals. Again they have some Kiwis coming over.

We had a two days with the year 9/10 Students from Snowy Mountains Christian School. These Students are endlessly enthusiastic and were even undaunted when the lightning started coming down as we scuttled to shore.

This year should continue the enjoyable experience of being a member of Twofold Yacht Club and look forward as the Club continues to grow and give more of the community the opportunity to develop the life skills of Sailing in what is a truly remarkable venue in Twofold Bay.

Ted Dexter  
Commodore  
October 2019

## 2019-2020 COMMITTEE

Commodore	Ted Dexter	0414550915	dexter01@activ8.net.au
Vice Commodore	John Balfour	0408174943	johnb@jexter.com.au
Rear Commodore	Robin Arthur	0425803570	svtiga@gmail.com
Secretary	Robyn Malcolm	026496 1659 0428961659	robynmalcolm8@gmail.com
Treasurer	Aleks Konjevic	W 0408164906 H 0423509757	konja7@bigpond.com
Public Officer	Robyn Malcolm	026496 1659 0428961659	robynmalcolm8@gmail.com
General Committee	Rod Van Berkel	0264962386 0414792194	rodvb70@live.com.au
	John Balfour	026495 0941 0408174943	johnb@jexter.com.au
	Neville Cowgill	0264961466 0408981498	nev.cowgill@gmail.com
	Robin Arthur	0425803570	svtiga@gmail.com
	Graeme Jackson	0419007160 0351588309	gwj.bullring@gmail.com
	Morrie Lynch	0438805684	mlsens@bigpond.net.au
<b>Race Sailing Committee</b>			
Chairperson	Ted Dexter	0414550915	dexter01@activ8.net.au
Handicapper	John Balfour	0408174943	johnb@jexter.com.au
Committee	Neville Cowgill	0264961466 0408981498	nev.cowgill@gmail.com
Membership Secretary	Robyn Malcolm	026496 1659 0428961659	robynmalcolm8@gmail.com
Publicity Officer	Gayl Cox	0264962776 0413243317	gaylmc@bigpond.com

# SAUTELLE WHITE *lawyers*



- *Wills and Estates*
- *Conveyancing*
- *Business Advice*
- *Estate Planning*
- *Power of Attorney*
- *Family Law*

**Market Place**  
**MERIMBULA**  
**6495 1122**

**213 Imlay St**  
**EDEN**  
**6496 4450**

**[www.sautellewhite.com.au](http://www.sautellewhite.com.au)**

***Traditional care you want - from the modern lawyers you need***





## Membership

Club membership varies from year to year but averages out at between 50-60 members per year.

This season our membership year covers the period 1 September 2019 to 30 August 2020. Forms are available on the club website [www.twofoldbayyc.sailing.org.au](http://www.twofoldbayyc.sailing.org.au) Please complete all details clearly, enter the relevant fees paid by EFT, and forward it without delay by email to the Membership Secretary at [robynmalcolm8@gmail.com](mailto:robynmalcolm8@gmail.com) Alternatively if paying by cheque, post your cheque plus the completed form to the club's Membership Secretary, PO Box 381, Eden NSW 2551.

### Membership Fees

Senior Member (19 yrs or over on 31 <sup>st</sup> Aug, and not a student)	\$200
Senior Member, 6 months only after 1 <sup>st</sup> Jan.	\$100
Senior New Member Special Introductory 1 <sup>st</sup> Year Offer (whole year)	\$100
Junior / Student Member / Learn to Sail	\$70
CYC / Student Member / Learn to Sail	\$35
Family Membership	\$350
Family Learn to Sail Membership	\$300
Dinghy / Tender Storage	\$75
Sailboard Storage	\$40
Key Deposit (refundable)	\$50

Please refer to the Membership Form for full terms and conditions pertaining to each Membership category.



# **TWO FOLD BAY YACHT CLUB**

## **Location**

The club is located on the foreshores of Twofold Bay, 3 kms south of Eden in the southern part of the Sapphire Coast.



## **Club Facilities**

Club facilities have gradually been improved over the years offering panoramic views out on to Quarantine Bay.

The club has its own rigid inflatable support vessel. Downstairs, dinghy & tender storage, hot showers, toilets, change rooms are available for the use of the members. Upstairs there is a large open area ideal for meetings & social functions, a kitchen area, & a drink service area. There is an outside BBQ where sailors often meet after the race for a casual drink.

## **Communications**

The Club's main means of communication is through its website [www.twofoldbayyc.sailing.org.au](http://www.twofoldbayyc.sailing.org.au) & email. The email addresses of the Committee members appear on page 5. The Club's postal address is PO Box 381 Eden NSW 2551.

## **Rules & By-laws**

The Club is incorporated under the NSW Associations Incorporation Act, 2009 (registered No: Y11457-40) on fourteenth day of December, 1990.

## **Committee Meetings**

Unless otherwise arranged club committee meetings will be held on the first Wednesday of each month at 5-00pm

# Twofold Bay Yacht Club

## Financials for 2018 - 2019 to 30th June 19



Income		Expenditure	
Type	Amount	Type	Amount
Membership Club	\$6,075.00	Insurance	\$3,914.73
Venue Hire	\$2,783.33	Defib (AED)	\$2,491.00
Alcohol 2018_19	\$2,363.35	Crown Lands	\$2,401.85
Advertising	\$1,325.00	Alcohol 2018_19	\$2,004.93
Grants - Defib (AED)	\$1,223.00	General Expenses	\$1,354.19
Regatta 2019	\$460.00	Affiliation Fees	\$1,000.00
Presentation 2018_19	\$423.00	Civic Services	\$951.72
Presentation 2017_18	\$414.00	Power Utility	\$718.17
Miscellaneous	\$390.00	Presentation 2018_19	\$387.24
Regatta 2019 Dinner	\$370.00	Presentation 2017_18	\$306.17
Hats and Caps	\$344.00	Hats and Caps	\$224.00
Race Fees 2018_19 Season	\$300.00	Reconciliation Error - Favourable	\$199.45
Power Utility - Solar Panels	\$134.69	Regatta 2019 Food Items	\$197.30
Other Drinks	\$109.84	Regatta 2019 Dinner	\$168.82
Fire Wood Sales	\$100.00	Trophies	\$136.00
Beer Coaster	\$88.00	Other Drinks	\$101.84
IOU	\$85.00	Beer Coaster	\$88.00
Storage	\$75.00	Regatta 2019	\$63.00
Sailor Training	\$40.00	Confectionary	\$35.55
Bottle Deposits	\$24.70		
Confectionary	\$14.00		
<b>Sub Total</b>	<b>\$17,141.91</b>	<b>Sub Total</b>	<b>\$16,743.96</b>
		<b>Net Operating Profit</b>	<b>\$397.95</b>
Opening Bank Balance @ 01/07/18	<b>\$7,186.35</b>	Closing Bank Balance @ 30/06/19	<b>\$7,584.30</b>
		Petty Cash @ 30/09/19	\$87.70
<b>Investments IMB TD's @ 01/07/18</b>		<b>Investments IMB TD's @ 30/06/19</b>	
* Accnt # xxxxx260	\$6,757.59	Accnt # xxxxx260	\$6,923.23
Accnt # xxxxx302	\$16,453.48	Accnt # xxxxx302	\$17,003.30
Accnt # xxxxx950	\$16,626.02	Accnt # xxxxx950	\$17,025.04
* (Corrected from 17/18) <b>Total</b>	<b>\$39,837.09</b>	<b>Total</b>	<b>\$40,951.57</b>

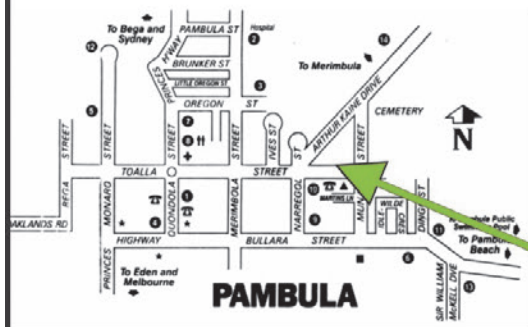


**“DRIVE RIGHT UP WALK RIGHT IN”**

**Pambula Little Bottler is more than just a place to buy a case of beer it's your one stop premium Liquor Shop with:**

- No parking or traffic hassles
- An extensive range of premium beer, wine and spirits
- Weekly specials
- Friendly and knowledgeable customer service

**Present your TBYC membership card for a 10% discount on all wines & spirits\*\***



**Pambula little BOTTLER**  
**START**  
 Your local liquor specialist

**4/13 TOALLA STREET  
 PAMBULA**



# 2018-2019 SEASON RESULTS

## Spring Series Points Score

1 <sup>st</sup>	Margaret Dee	Roger Mathews
2 <sup>nd</sup>	Go Go	Nev Cowgill
3 <sup>rd</sup>	Livid	Ted Dexter

## Summer Series Points Score

1 <sup>st</sup>	Livid	Ted Dexter
2 <sup>nd</sup>	Go Go	Neville Cowgill
3 <sup>rd</sup>	Margaret Dee	Roger Mathews

## 2018 – 2019 Club Championship

1 <sup>st</sup>	Livid	Ted Dexter
2 <sup>nd</sup>	Go Go	Nev Cowgill
3 <sup>rd</sup>	Thermopyae	Kim Martyn

## 2018-2019 Sternchaser Series

1 <sup>st</sup>	Margaret Dee	Roger Mathews
2 <sup>nd</sup>	Livid	Ted Dexter
3 <sup>rd</sup>	Go Go	Nev Cowgill

## Trophy Races

**Lady Helm Race** – Gayl Cox , Margaret Dee

**Commodores Cup** – Roger Mathews,

Margaret Dee

**Australia Day Race** – Ted Dexter, Livid

**Traders Cup** – Nev Cowgill, Go Go

**Navigator of the Year** – Robin Arthur  
& Crew, Tiga

*Margaret Dee*



*Livid*



*Go Go*



*Thermopyae*



## TWOFOLD BAY YACHT CLUB REGATTA

The annual TBYC regatta is held on the 3rd weekend of February, with sailors from as far as Melbourne, Canberra and Sydney travelling to enjoy four races over two days on one of Australia's best sailing venues. With large fleets competing in 5 separate divisions in the past four years.



### Use of Club Training Boats

Use of Club Dinghies will be restricted to sail training programs, but on request, may be made available to club members for casual sailing at Quarantine Bay outside the months of the sail training program. Enquiries should be made to the Commodore Ted Dexter on 0414 550 915, or the Vice Commodore John Balfour on 0408 174 943.

### MEMBER SPONSORED USE OF CLUB FACILITIES

Clubhouse \$150.00 per day or part thereof.

Enquiries in the first instance to be made to the Commodore Ted Dexter on 0414 550 915.



**Eden Realty**  
Turning dreams into reality  
*Professional personalised service!*

- Residential Sales
- Rural Sales
- Property Management
- Holiday Accommodation
- Commercial Sales & Leasing

**132 Imlay Street, EDEN**  
**6496 1999**  
**www.edenrealty.com.au**  
MOB: 0427 260 500 • A/H: 6495 6900

# RACE MANAGEMENT

## Types Of Events

Twofold Bay Yacht Club will be offering Keel Boat Events including fixed keel craft and trailable yachts. Any off the beach activities will be subject to demand & a separate Risk Management Plan.

## Personnel In Attendance

### *Keel Boat Events*

There will be a person experienced in the conduct of yacht races appointed as "Officer of the Day" for each event day. That person may operate from one of the participating yachts using VHF marine radio.

## Communication Procedures

### 1 Declaration:

#### *Keel and Trailable Boats:*

Prior to the start of each race, the skipper &/or crew will register with the Officer of the Day via radio on VHF 72 declaring their intention to start. Within 15 minutes of finishing or retiring each skipper shall log off with OOD to indicate that the race was completed in accordance with the rules or that the boat failed to complete the race.

### 2. Radio


















The Club logs on with Marine Rescue Eden at the start of activities providing details of the activity and numbers of boats expected. It logs off when all activities are completed. All keel and trailable boats are also requested to log on and off with Marine Rescue Eden on VHF 16 and to monitor club channel VHF 72 for the duration of event.

### 3. Briefing

A briefing may be conducted prior to the commencement of events scheduled, during which participants will be advised of weather conditions and course information. Participants will be advised of course information by the OOD on VHF 72 prior to the start of the race.



# Safety equipment requirements for heading offshore

	Lifejacket	1pp*		Paddles or oars and rowlocks	1
	Anchor and chain/line	1		Safety label	1
	Bailer/Bucket/Fire bucket	1		Sound signal	1
	Bilge pump	1**		V sheet	1
	Compass	1		Water	2Lpp*
	Distress flare (Orange)	2		Waterproof torch	1
	Distress flare (Red)	2		EPIRB - 406 MHz	1
	Fire extinguisher	1**		Marine radio	1
	Map/chart	1			

\*Per Person \*\* More may be required for larger vessels

For a detailed explanation of these safety equipment requirements visit [rms.nsw.gov.au/safety-equipment](http://rms.nsw.gov.au/safety-equipment) or call Roads and Maritime Services on **13 12 36**



**Phone: 6496 1082**

[www.gasandgear.com.au](http://www.gasandgear.com.au)

130 Imlay Street, Eden

Come in, Talk to friendly staff who know their gear.

For a range of products and services to help you work rest and play

***The best on the South Coast for;***

LP gas deliveries (no annual cylinder fee), LP gas refills,  
Camping Equipment, Cleaning chemicals & paper supplies,  
BBQ's & accessories, Welding equipment, Key cutting,  
Work wear & work boots & much more.



# EMERGENCY PLAN

## Off the Water Emergency Fire

All persons shall exit the building from the nearest of the two doors & meet outside the clubhouse in the car park. The OOD shall make every endeavour to 'turn off' the electricity & gas supply. If operational the hose should be used to extinguish the fire.

Police & Fire Brigade to be contacted on 000.

## Personal Accident

Basic first aid to be provided. First Aid Kit located on top of Fridge in kitchen area.

If the person is critically injured Ambulance to be called on 000 or mobile on 112.

## On the Water Emergency

Any vessel observing another vessel in distress is to:

1. Call the Duty Officer on VHF 72 and call Marine Rescue Eden on VHF 16 and report the incident. Request rescue if required.  
Keep Marine Rescue Eden informed of status & if the crew are in danger request Police support.
2. While waiting for back up, make every attempt to provide assistance to the crew of the vessel in distress. N.B. No vessel should endanger the lives of their crew in providing assistance.
3. Priority is to be given to the determination of the safety of the crew. Once it has been determined that the crew are safe, standard rescue procedures should be followed. Every attempt will be made by the vessel offering assistance to effect rescue of the vessel.

## Emergency Phone Numbers

Ambulance	131233, 000 or 112 on Mob
Marine Rescue Eden	6496 2167
Dentist – Emergency Contact – Pambula Hospital	6495 8200
Doctor - Curalo Medical Clinic – Eden	6496 3322
Dr Hammond, Access Medical	6496 4039
Hospital - Pambula	6495 8200
Police – Eden	6496 1444
Water Police – Eden: <i>Contact Eden Marine Rescue or</i>	000
Harbour Master Eden	6496 1719
Customs Eden (Australian Border Force)	6496 8000

## RISK WARNING

This RISK WARNING is issued jointly by the Twofold Bay Yacht Club and the NSW Maritime Authority, pursuant to the Civil Liability Act 2002 to all persons wishing to participate in the sailing activities conducted by Twofold Bay Yacht Club.

***Participants are warned that, regardless of the precautions, which might be taken by reasonable and experienced persons, sailing can be a dangerous pursuit and participants are exposed to significant risk of property damage, physical harm and possibly death.***

As an indication, these risks may include, but are not limited to:

- The extremes of weather and sea conditions.
- The potential that control of vessels may be lost, resulting in collision with objects and other vessels.
- The sudden movement of the vessel at any time and the possibility that participants may fall or be thrown overboard, resulting in drowning.
- The possibility that participants may be injured by equipment on the vessel.
- The absence of immediate medical care and the likelihood that significant delays may occur before medical care is available.
- Exposure to the elements for extended periods.

Twofold Bay Yacht Club and the NSW Maritime Authority also warn participants that regardless of their best intentions, they may be unable to render assistance to participants who are in distress. Participants are warned to consider the above risks and all other risks before deciding to participate in any sailing event with Twofold Bay Yacht Club.

Participants are also advised that although Twofold Bay Yacht Club is covered by third party liability insurance, this cover DOES NOT extend to racing participants. Any participant who considers they have a need for insurance must make their own private arrangements with an insurer. A personal accident insurance policy is available with the Club subscription to membership of Australian Sailing.



## RISK MANAGEMENT

### Keel Boats

Twofold Bay Yacht Club Inc. takes all reasonably practical steps to protect the safety of all who participate in the Club's sailing activities.

Hazard	Incident	Likelihood of Risk	Risk Management Procedures
Heavy Winds &/or Heavy Sea Swell	Damage to Equipment, Loss of control of Vessel, Personal Injury	Variable - depending on crew experience, Generally low risk	Limit sailing activities to conditions where the wind does not consistently exceed 25 knots wind strength for a 10 minute period. Pre-race briefing attendance – which includes B.O.M. Weather forecasts being available. All boats to maintain radio watch on VHF 72 during period on water. All boats to log on & off with Eden Marine Rescue. Compliance with safety requirements - AS Category 6 or NSW Maritime Open Waters. Compulsory 3rd Party Liability Insurance. Comply with NSW Maritime navigation marks. Compliance with NSW Maritime guidelines re approaching/dealing with Whales & Dolphins. It is strongly recommended that all skippers seek current information re B.O.M forecasts prior to the race start.
Collision - other vessel or submerged object, e.g. reefs, rock	Damage to Equipment, Loss of control of Vessel, Personal Injury	Variable - depending on accuracy of navigation marks, presence of whales & dolphins Generally low risk	

# FRASER MARINE

**A modern well-equipped workshop with fully trained mechanics servicing all major outboard motors.**

Agent for:

- Quintrex boats
- Suzuki and Evinrude outboard motors
- Stihl power products
- Boating accessories

**Cnr Princes Highway & Maling St, Eden NSW 2551**

**Phone: 02 6496 3688**





**Tudor  
Insurance  
Australia**

Working for you.

# **TWOFOLD BAY YACHT CLUB MEMBERS BOAT INSURANCE EXCLUSIVE**

## ***Covering***

- Accidental Damage. Agreed Value
- Third Party Liability \$10,000,000
- Covered Whilst Racing
- Transit Cover - Australia Wide
- Theft of Boat, Equipment & Trailer
- Underwritten with QBE Insurance

**Contact David Cooper - 03 97073033**  
**Tudor Insurance Australia**  
**(Insurance Brokers) Pty Ltd**

Email: [davidc@tudorinsurance.com.au](mailto:davidc@tudorinsurance.com.au)

Web: [www.tudorinsurance.com.au](http://www.tudorinsurance.com.au)



# INSURANCE

Australian Sailing arranges a group personal accident insurance covering all senior and youth members and students undertaking a Sail Australia Training Scheme at an 'Australian Sailing' Training Centre, or other recognised organisation, between the ages of 5 years and 85 years.

Cover Excludes whilst participating in Category 0 races.

By way of summary cover is as follows: -

**Note that this is a broad summary only – Benefits and cover are subject always to policy terms, clauses, conditions and limitations.**

**When are you covered?**

1. Whilst sailing, cruising, motor boating (no racing) and engaging / participating/officiating in organised races.
2. Whilst engaging in training or practice for activities as described above.
3. Whilst staying away from the Insured Person's Country for an extended period for the purposes of participating in activities described above.
4. Whilst on the premises of 'Australian Sailing' Inc. affiliated yacht club.
5. While undertaking an 'Australian Sailing' Training Scheme at an 'Australian Sailing' Training Centre or other recognised organisation.
6. Whilst on the premises of an Australian Sailing Training Centre or other recognised organisation for the purpose of undertaking a 'Australian Sailing' Training Scheme.
7. Limited cover is available whilst traveling directly between the activities described in 1, 2, 3, 4 or 5 and your residence or place of employment or the premises of the Insured, please refer to the full policy wording for details.

For further information refer to the 'Australian Sailing' website - Insurance

## INDEMNITY

In consideration of being allowed to participate in a race, cruise or other event conducted by Twofold Bay Yacht Club Incorporated, each participant agrees:

To do so at his or her own risk;

Not to make any claim against the Club for any damage, injury or loss sustained or caused by participating in the race, cruise or event as a result of an occurrence either before or following the finish of the race, cruise or event;

To participate at his or her own risk & to indemnify the Club, & keep it indemnified, together with any other organization or person involved in

the conduct of the race, cruise or event against all claims, suits, actions or demands which may be brought in respect of any damage, injury or loss sustained or caused by him or her in the course of participating in the race, cruise or event; & to exonerate the Club's Committee together with any other organization or person involved in the conduct of the race, cruise or event from any damage, injury or loss sustained or caused to him or her whether due to alleged negligence or otherwise.

## DISCLAIMER

A person participating in a race or cruise or event does so entirely at his or her own risk & responsibility. The Club, the Committee, Officer of the Day or other person organizing a race, cruise or event is not responsible for:

- The seaworthiness of a participating boat;
- The sufficiency or adequacy of her equipment;
- Damage, injury or loss which may result, directly nor indirectly, from preparing for, or participating in, a race or other event or from an occurrence either before or following the finish of the race, cruise or event.

## Be prop aware

**Boat propellers pose a risk that is easily ignored because they are under the water, 'out of sight and out of mind'.**

So always watch the prop and remember:

- Ensure the prop area is all clear before starting the engine
- Keep proper lookout, especially when near swimmers
- Stay out of designated swimming areas
- Observe 'distance off' rules
- Keep all arms and legs inside the boat
- Wear a kill-switch lanyard, especially when boating alone.

For more information call Roads and Maritime Services on **13 12 36** or visit **[rms.nsw.gov.au/maritime](https://rms.nsw.gov.au/maritime)**





## Need Engineering Plans for Council for your new home or development project?

Contact Brian Chadwick on board "GEM" or  
Phone **0428 645 830** for friendly helpful service and an  
obligation free quote.

Country Technical Consultants Pty Ltd  
Consulting Engineers of Eden serving the Sapphire Coast

[coteco@bigpond.net.au](mailto:coteco@bigpond.net.au)



## 4 - Step lifejacket pre - wear check

A range of lifejacket styles are now available that look good, are easy to wear and don't get in the way of your favourite activity on the water.  
**Remember:**

- Service your lifejacket each year or according to the manufacturer's instructions.
- Follow the 4 - step lifejacket check for self inflating lifejackets:
  - Step 1: Look for wear and tear
  - Step 2: Check that the cylinder and cartridge is in good condition
  - Step 3: Make sure the pull cord is ready for use
  - Step 4: Check that the cylinder and cartridge are hand tight



**AUSTRALIAN SAILING (AS)**  
**2017-2021 SPECIAL REGULATIONS EQUIPMENT AUDIT FORM**



CATEGORY 6	MONOHULLS & MULTIHULLS	Races close to shoreline in protected waters, daylight hours, with effective rescue availability.
DATE OF AUDIT	SAIL NO:	BOAT NAME:

This section to be completed and **ticked or initialled** by person in charge (P) and auditor(A). If item not applicable, mark 'n/a' or dash '-'

Reg	Structural/Fixed Deck Items	P	A
2.03.1	Equipment functions & adequate for intended use		
2.03.2	Ballast & heavy equipment secured		
3.06.1	(b) Enclosed cabin, ≥5.5m LH, and carrying fuel below decks, 2 exits		
3.07.1	(a) No hatches forward of maximum beam open inwards except if size < 0.071 m <sup>2</sup> (b) Non-conforming hatches labelled 'Not to be opened at sea'		
3.07.2	(a)(i) Hatches above water when heeled 90° (a)(iii) Non-conforming hatches; size < 0.071 m <sup>2</sup> (a)(iii) Non-conforming hatches kept shut while racing		
3.08.1	Cockpit strong, self-draining, & watertight (3.08.2)		
3.08.3	If fitted, bilge pump outlet not connected to cockpit drain		
3.08.7	Number of cockpit drains required: <8.5 m: 2 x 25 mm Age/Series Date pre 07/77 & >8.5 m: 2 x 25 mm Age/ Series Date post 07/77 & >8.5 m: 4 x 20 mm Multihull minimum drain sizes after allowance for screen 20 cm <sup>2</sup> per m <sup>2</sup> of cockpit		
3.08.8	(a) Lifelines uncoated stainless steel wire		
3.12.6	(d) Gap secured by lanyard ≤ 100 mm; Lanyard replaced annually		
3.20.6	Bilge pump not to discharge into closed cockpit		
3.20.7	Bilge pump not connected to cockpit drains		
3.20.7	Bilge pump minimum suction bore 25 mm		
3.28.1	Bilge pump & strum boxes accessible		
3.28.1	Hull Identification, min 50 mm, name & state rego; OR name, sail number & club		
4.01.1	Sail numbers as per RRS 77 and Appendix G		
Reg	Structural/Fixed Items Below	P	A
3.17	Cooking stove/heating appliance securely fastened, safe, accessible shutoff		
If fitted	Gas or methylated spirits only fuels for cooking "REMEMBER Turn Off Gas At Bottle" sign Gas detection for permanent pilot light Disposable gas canisters ≤ 225 grams Gas bottle, spare canisters in separate compartment ventilated overboard		
3.24.6	If motor fitted, separate starter battery for electric starter		
3.24.7	Separate generators, if carried, securely covered and permanently installed		
3.24.8	Fuel tank shut off valve/cock if fuel can escape or siphon		
3.24.9	(a) Petrol tanks – see regulation (b) Diesel tanks metal or other certified material (c) Fuel lines comply (d) Outboard tanks secured on deck or ventilated compartment; manufacturer supplied or recognised national standard (e) Petrol not below decks in portable containers (f) Flexible fuel tank not permitted		
Reg	Portable Equipment	P	A
3.20.9	2 x 8 litre buckets, stout construction with lanyard		
3.24.10	If no motor & <5.5m LH, oars or paddles x 2; blade area 0.04m <sup>2</sup>		
4.04.2	If fitted, 1 x fire extinguisher 10BE dry powder min or equiv.		
4.04.4	Fire blanket (for cooking device with open flame)		
4.05.1	(a) Anchor & ground tackle as per Table 1 (b) Anchor & warp sizes Table 2 or Table 3 Anchor 1 Type.....kg/size..... (c) Anchor assembled, attached to tackle		

4.07.4	First aid kit, waterproof container; contents listed; alternative brands permitted		
4.07.9	First aid contents as per list at end of this form		
4.10.3	Current AS "Racing Rules of Sailing" and "Special Regulations Part 1"; electronic or hard copy		
4.15.3	Sharp knife sheathed, restrained in or near cockpit		
4.16.1	Name on all buoyant equipment & items		
4.16.2	Personal lifejacket marked to identify owner		
4.17	Retroreflective tape on lifebuoys, lifelines, liferafts		
4.26	Retrieval method of crew from water		
5.01.1	(i) Lifejacket ≥ 50N, in service Number (1 per crew)..... (See regulation for compliance standards) (j) If no lifelines, PFD ≥ 50N (as per 5.01.1i) worn by each crew on deck		

4.07.9 First Aid Kit Contents List – within expiry date					
NON-PRESCRIPTION	P	A	NON-PRESCRIPTION	P	A
Soluble Aspirin x 20			Band-aids or equivalent roll of bandaid x 20		
Disposable gloves x 10			Normal saline 30 ml x 2		
Crepe bandages 75 mm x 1.5 m x 2			Sunscreen 30+ 250 ml x 1		
Non-adherent dressing or gauze (e.g. Melolin) x 5			Scissors, stainless steel x 1		
			CPR mask or 6 face shields		

END OF FORM

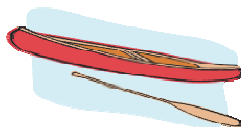
*As this form is for national use and portability, please use a separate checklist page for additional club/race organiser requirements.*



See: <https://s3-ap-southeast-2.amazonaws.com/piano.revolutionise.com.au/site/mbkqnfmrrou5xu6em.pdf>

# **Marine Paints**

## **Biggest range on the coast**



 Jotun

 International

 Anti-fouling

 Colour matching

 Spray Equipment

 All marine &  
industrial paints

 Resins & fillers

 Full range of tiles

 Full range of  
bathroom fixtures

 2 pack poly

 2 pack epoxy



**(Call Chris Hopkins)**  
**& Mention TBYC**

Shop 11/3 Tura Beach Dve. Tura Beach NSW 2548

Ph 02 64950409

Fax 02 64950469

[chris@turatilepaint.com](mailto:chris@turatilepaint.com)



## **TWOFOLD BAY YACHT CLUB OFFICER OF THE DAY DUTIES**

The Officer of the Day is responsible to the TBYC Committee for the management of the scheduled sailing events on their rostered duty day. Please note, the NSW Maritime Aquatic License which gives approval for the conduct of sailing events on Twofold Bay is provided on the proviso that appropriate procedures will be implemented to manage the risks associated with the club's event/s. All OOD's are requested to familiarise themselves and comply with the relevant sections of the following documents as included in this handbook.

- TBYC Emergency Plan
- TBYC Operational Plan
- TBYC Risk Management assessment page

### **Officer of the Day Checklist Keel Boats**

1. Three or more yachts must have made their intention to start known to the Officer of the Day for a race to be started.
2. Decide if the weather is suitable to sail in (Please refer in particular to Risk Management documentation in relation to wind strength cut off for club events). Consult with Chair of Race Committee as necessary.
3. Decide which Keelboat course will be used.
4. If a sternchaser event is to be conducted, liaise with Handicapper before the event to determine individual yacht starting times. Have this information available for intending starters.
5. Take responsibility for collecting starting/finishing buoy from clubhouse, positioning it off the light off the breakwall for a start/finish suitable for the course being used.
6. Radio the Marine Rescue Eden on Channel VHF 16 to inform that the club will be racing and where activity will be.
7. Using channel 72\*, communicate with all yachts intending to start up to 15 minutes before the start, sign them on, notify course to be sailed and indicate count down &/or start time.
8. Call the start on channel 72\*.
9. Record finish times as radioed in by participating yachts.
10. At the end of the race take responsibility for organizing the picking up of the buoy & returning it to the clubhouse.
11. Ensure that all yachts have finished or retired and signed-off.
12. Provide time sheets to Chair of Race Committee or Handicapper.

***\*If a VHF radio is not available to the OOD, the club's portable VHF will be made available***

# Twofold Bay Yacht Club – 2019-2020 Sailing Program

**Start Time: 1200 + 1230** for all racing events (please check Sailing Instructions for Divisional Start times) except for:-

- 'Sternchaser' events where start times may be allocated from 1100.
- A Social Sail / Race to open the Summer Series. For most this will start at around 1030.

**Event Key: CS** = Championship Series; **SPR** = Spring Point Score; **SPS** = Summer Point Score:

**OTB** = off the Beach

**For further information contact: Sailing Captain**

**– Ted Dexter 0414 550 915**

**Sail Training** – Days & dates to be confirmed, but will be held at times & days at the discretion of the Sailing Committee.

Month	Date	Day	Event
<b>October 2019</b>	5	Sat	Club-house & grounds clean-up & BBQ. (NSW Labor Day Weekend)
	13	Sun	<b>SPR-1</b> Start of Racing Season (Daylight Saving commences)
	20	Sun	<b>CS-1 &amp; SPR-2</b>
	27	Sun	<b>SPR-3</b> (STERNCHASER EVENT 1) <b>Commodore's Trophy</b>
<b>November 2019</b>	2	Sat	Eden Whale Festival – TBYC supporting activities TBA No Race scheduled.
	3	Sun	
	10	Sun	<b>CS-2 &amp; SPR-4</b>
	17	Sun	<b>SPR-5</b>
	24	Sun	<b>CS-3 &amp; SPR-6</b>
<b>December 2019</b>	1	Sun	<b>SPR-7</b> (STERNCHASER EVENT 2)
	8	Sun	<b>CS-4 &amp; SPR-8</b>
	15	Sun	<b>SPR-9</b> (STERNCHASER EVENT 3) Christmas BBQ & Drinks after race.

Month	Date	Day	Event
<b>January 2020</b>	12	Sun	<b>Social Sail / Race with onshore BBQ</b>
	19	Sun	<b>SPS-1</b>
	25,26, 27	Sat, Sun, Mon	Australia Day Weekend – No Racing
<b>February 2020</b>	2	Sun	<b>CS-5 &amp; SPS-2</b> (Australia Day Race)
	8	Sat	Pre Regatta working bee at club house – 0930.
	9	Sun	<b>SPS-3</b> (STERNCHASER EVENT 4) – <b>Lady Helmsperson Race</b>
	15 & 16	Sat & Sun	<b>TBYC ANNUAL REGATTA</b> – including International Flying Dutchman Australian Championships.
	23	Sun	<b>CS-6 &amp; SPS-4</b>
<b>March 2020</b>	1	Sun	<b>SPS-5</b> (STERNCHASER EVENT 5) - <b>Trader Cup</b>
	7,8	Sat, Sun	Wallagoot Lake Regatta
	8	Sun	<b>SPS-6</b>
	15	Sun	<b>CS-7 &amp; SPS-7</b>
	22	Sun	<b>SPS-8</b>
	29	Sun	<b>CS-8 &amp; SPS-9</b>
<b>April 2020</b>	5	Sun	<b>SPS-10</b> (Daylight Saving Ends)
	12	Sun	Easter Sunday – No Racing
	19	Sun	<b>CS-9 &amp; SPS-11</b>
	26	Sun	<b>SPS-12</b> (Anzac Day Sat 25 <sup>th</sup> )
<b>May 2020</b>	3	Sun	<b>SPS</b> (Makeup Race as determined by Committee.)
	10	Sun	<b>SPS</b> (Makeup Race as determined by Committee.)
<b>June 2020</b>	6/7/8	Sat/ Sun/ Mon	Queen's Birthday – South Coast Skin Divers Club
	14	Sun	<b>TBYC PRESENTATIONS at clubhouse followed by BBQ Lunch</b> (Come along & support your club)
<b>July 2020</b>	12	Sun	<b>TBYC AGM - 12:00pm</b> -- Time to be confirmed by Committee.

# ***Broadwater Engineering Pty Ltd***

A.B.N 36 090 255 360



4305 Princes Hwy  
Pambula NSW 2549

[broadwatereng@gmail.com](mailto:broadwatereng@gmail.com)

**M 0498 262 762    P (02) 6495 7129**

Full slipway services available

Dry dock facilities

Boat storage

Engineering services

Repairs and maintenance



# **Notice of Race – 2019 - 2020 Sailing Season**

## **1. Rules:**

- 1.1. The races will be governed by the rules as defined in the Racing Rules of Sailing 2017-2020)
- 1.2. Rule 52 has been modified to allow for boats crewed by two (2) competitors (only) to compete using powered assisted or self locking 'auto helm/self steering systems'

## **2. Eligibility and Entry:**

- 2.1. Events conducted during the season are open to all keel boats/trailable yachts.
- 2.2. Races will be conducted in two divisions. Both divisions will sail the same course with elapsed times being used for handicapping purposes. Divisions will be allocated by the Chairperson of the Race Committee.
- 2.3. All entrants must confirm their entry by completing the attached TBYC Race Entry Form.
- 2.4. Competing yachts shall comply with NSW Maritime Open Water safety Equipment and every attempt is to be made to comply with Category 6 requirements of Part 1 of Australian Sailing (AS) Special regulations.
- 2.5. The skipper or owner of the yacht must be a member of TBYC Inc. and a member of AS to score points in any of the series events conducted by T.B.Y.C.
- 2.6. Any crew on board a yacht competing in any of the events conducted by T.B.Y.C. who sails more than 3 races in any one season, shall be a member of T.B.Y.C. and a member of Australian Sailing (with the exception of members classified as 'Learn to Sail Members' who are exempt in their first year of membership from AS affiliation). Non-compliant entrants or crews will NOT be considered as valid competitors in any race.
- 2.7. Keel/trailable boats must confirm their intention to race (sign-on), "on the water", by contacting the OOD by radio or by other verbal means. Boats must also 'sign off' by radio or mob phone to the OOD providing their Finishing Time.
- 2.8. Keelboats/Trailable boats must have a minimum crew of two persons capable of handling the boat.

## **3. Fees:**

- 3.1. Entry for all events - \$100.00.
- 3.2. Casual entry will still be available in all events at \$15.00 per race entered.

## **4. Schedule of Events:**

- 4.1. The Club's sailing program is attached
- 4.2. Race times. Normal race day – Division Two - warning signal 1155 hours, start 1200 hour, Division One – Warning Signal 1225 hours, start 1230 GPS time; Stern chaser Race – from 1130 hours.; Special events – as advised by Race Committee



## **5. Sailing Instructions:**

5.1. The sailing Instructions are available in this Handbook and on the TBYC website.

## **6. Venue and Courses:**

6.1. The racing will be conducted on Twofold Bay, Eden and details of courses will be provided in the sailing instructions.

## **7. Penalty System:**

7.1. Rules 44.1 and 44.2 shall apply. Multihull yachts are only required to compete a 360 degree turn.

## **8. Scoring:**

8.1. Skipper/owners who are not financial members of TBYC will be considered "casual entrants" and will **not** receive series or championship points.

*NOTE: Points are awarded to the boat/owner.*

8.2. Entrants will need to complete 3 races to score points in any series.

8.3. The low point scoring system will apply to all races conducted

8.4. Refer to Sailing Instructions for detail on races to count for each series and time calculations.

8.5. Boats failing to sign off & advise their finishing time within 2 hrs of the finish per 2.7 above, will be scored DNF for that race.

## **9. Handicapping:**

9.1. Warm Up, Spring, Summer, Autumn and Stern chaser series to be based on performance handicap using 'Top Yacht' handicapping software.

9.2. Championship series – TBYC yardstick (AHC) to be allocated to each competing yacht by the Race Committee.

## **10. Radio Communication:**

10.1. Except in an emergency, a boat shall neither make radio transmissions while racing, nor receive radio communications not available to all boats. This restriction also applies to mobile telephones. No radio or phone contact shall be permitted within the 5 minute start period.

## **11 Prizes:**

Shall be awarded to the winner/s/place getters of the various series at the discretion of the T.B.Y.C. Race Committee, and shall go to the Boat Owner.

## **12 Disclaimer of liability:**

Competitors participate in the TBYC race events entirely at their own risk. See Rule 4. Decision to Race. The organizing authority will not accept any liability for material damage or personal injury or death sustained in conjunction with, prior to, during or after any event.

## **13 Insurance:**

Each participating boat shall be insured with valid third party liability insurance with a minimum cover of \$2,000,000.00 per event or the equivalent.

**14 Further Information:** Ted Dexter (Captain of Race Committee )  
0414 550 915.

# **Keel Boat Sailing Instructions 2019-2020 Season**

## **1. RULES**

- 1.1. The races will be governed by the 'rules' as defined in The Racing Rules of Sailing The Racing Rules of Sailing 2017-2020). The Special Regulations of Australian Sailing, the rules of the Class Associations of the yacht (except where amended by these Sailing Instructions) and these Sailing Instructions.
- 1.2. Rule 52 has been modified to allow for two handed crewed boats to compete using powered assisted 'auto helm/self steering systems'.

## **2. NOTICES TO COMPETITORS**

Any imminent changes will be communicated via SMS Text, Phone or email.

## **3. SIGNALS MADE ASHORE**

- 3.1. Signals made ashore will be displayed at the Clubhouse.
- 3.2. When flag AP is displayed ashore, '1 minute' is replaced with 'not less than 20 minutes' in race signal AP.
- 3.3. The club flag mast positioned on the breakwater may be used for starting and finishing races whereby 3.2 does not apply.

## **4. SCHEDULE OF RACES**

- 4.1. Racing is scheduled as in the Club's Program with start times (Warning signal) as follows: Normal race day – Division Two 1200, Division One 1230; Sternchaser Races from 1130 (nominal).
- 4.2. Where a Championship Race in the program is unable to be conducted, it will be resailed concurrently with a point score race at the first available opportunity. Sternchaser races shall not be included in the Championship Race Series.

## **5. FLAGS**

- 5.1. Flags to indicate the 'type of boat' (when used on a Committee boat start) will be: Keel Boat/Trailable Yacht Code flag 'K'

## **6. RACING AREAS**

- 6.1. Racing will be conducted in, and in the immediate vicinity of Twofold Bay, Eden.

## **7. THE COURSES**

- 7.1 Full details of the numbered courses for the various types of races are provided in the rear of the TBYC Year Handbook, Details include the approximate angles between legs, the order in which marks are to be passed, and the side on which each mark is to be left. It also provides details of the numeral flags indicating the course and if appropriate, the direction to be sailed & where applicable the type of start and finish to be used.

## **8 MARKS**

- 8.1 When a starting and finishing mark is used, it will be a red-orange round ball with no flag.
- 8.2 Fixed marks are described in the Attachment to the 2017-2018 Sailing Instructions – “Courses to be Sailed”.

## **9 AREAS THAT ARE OBSTRUCTIONS**

- 9.1 Mussel buoys and their marks
- 9.2 **North Cardinal mark off Whale Spit**
- 9.3 Navy Wharf, when a Navy vessel is alongside flying code flag ‘B’ (red swallow tail flag) – all vessels must keep 500 + metres clear of area.

## **10 THE START**

- 10.1 Races will be started by using Rule 26, except when a 'handicap start' or a 'Non Committee Boat' start is used.
- 10.2 For 'Non-Committee Boat' starts, the starting line will either be:
  - 10.2.1 When a starting buoy is in position - between the beacon light on the end of the Quarantine Bay break water and the mark laid notionally south of the break wall:-
    - a) Where the first mark is the fixed club buoy off Boydtown, boats starting shall leave the red start line buoy to PORT.
    - b) In all other starts the red start line buoy shall be left to STARBOARD or, In an area adjacent to Cattle Bay, which will be described by the OOD at the same time as course selection has been advised.
  - 10.2.2 When no starting mark is in position – For all starts, the Start Line shall be the imaginary line between the white painted rock at Quandoo Point & the beacon light at the end of Quarantine Bay break water (with the break water light being left to PORT). The Start shall be executed on the “line” anywhere within 300 metres from the beacon light., OR In an area adjacent to Cattle Bay, which will be described by the OOD at the same time as course selection has been advised.
  - 10.2.3 The OOD will advise the start/finish arrangements at the time of course selection.
- 10.3 For a 'Non-Committee Boat' start, either a five (5) minute or ten (10) minute warning signal may be made from a duty boat from which competitors will time their own start time for a race, 5 minutes (or 10 minutes) from this warning signal. This signal will be made by a minimum of one of the following means:
  - 10.3.1 A sound signal either by air horn, loud hailer or starting pistol
  - 10.3.2 A call on VHF 72
- 10.4 Unless advised otherwise by the OOD, the warning signal will be at 1155, with a start at 1200 for Division **Two**, & 1225, with a start at 1230 GPS time for Division **One**. In the event of any breakdown in communication, this will be the default time for the start of the race.
- 10.5 For a 'Non Committee Boat' start, the Race Committee cannot guarantee that any further signals will be made. If possible additional signals may be provided, depending on the access of the duty boat to radio frequencies. The onus is on the skipper to time their start after the preparatory signal.

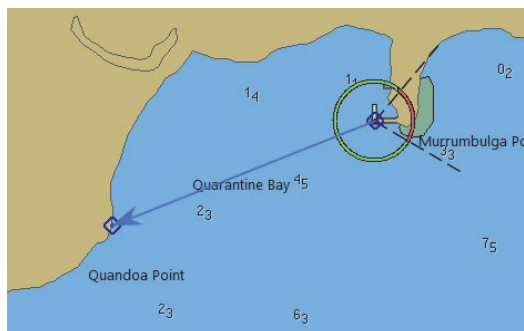
- 10.6 A yacht starting later than 10 minutes after her starting Time will be scored Did Not Start. This changes Rule A4.1.
- 10.7 For 'Sternchaser races', keel/trailerable boats will be allocated a starting time by the handicapper. The handicapper will calculate the starting times on the morning of the race, and will notify individual skippers of their start times and the selected Course # prior to 9:30am by mobile phone SMS text message. Yachts should self-start at their designated start time using GPS time.

Note:- The start times will be calculated by the handicapper utilising TopYacht software, using best estimate Division 1 & 2 race pursuit times allowing for the direction & 80% of the wind strength predicted by "Willys Weather" – Greencape.

The course selection for Sternchaser Races will be standardised as either Course 8 or Course 17 (same course – opposite direction) depending on predicted wind direction. ( Course 8 for Southerly winds & Course 17 for Northerly winds.)

## 11 THE FINISH

- 11.1 The finishing line will normally be between the flag mast on the Committee boat and the start finishing mark. When in position, a blue flag will be flown from the flag mast on the Committee boat. The finish line should be crossed from the direction of the last mark or as indicated in the Courses to be sailed.
- 11.2 For Keel/Trailerable 'non-Committee boat' finishes, the finish line will be between the Light on the end of the Quarantine Bay Breakwater and the white marked rock at Quandoo Point (Lat 37deg 04.848min, Lon 149deg 52.583min) **Caution:-** Boats finishing to the left of line centre must be mindful of the presence of submerged reef sections extending out EAST of the point. Exact safe limits have not been defined at time of preparation of these S.I's.



- 11.3 In the event that there is no vessel or OOD assigned to record the finish, all competitors shall be expected to call their passage through the finish line by agreed radio channel AND record their own elapsed time (preferably referring to GPS time as used for starting) and ensure that it is either phoned or emailed to the handicapper on the day of the race.

## 12 TIME LIMITS AND TARGET TIMES

Race Type	Time Limit 1 <sup>st</sup> Yacht	Time Limit Remaining Yachts
Championship & Pointscore	3 hours	4 hours
Sternchaser	3 hours – from starting time of first yacht to start race	4 hours

- 12.1 Yachts failing to finish within the time limit will be scored Did Not Finish (DNF). This changes rules 35 and A4.1.

### **13 COMMENCEMENT & ABANDONMENT OF RACES**

- 13.1 A decision on the commencement of a race or abandonment of a race not already started will be made by the Race Committee's OOD or representative based on a reliable measure of the wind strength from the masthead indicators of two prescribed yachts.
- 13.2 If the wind speed exceeds 25kts (over a 5 minute period) the race will NOT be commenced and will therefore be abandoned in compliance with the conditions of the TBYC Aquatic License.
- 13.3 A race already started will be abandoned if the wind-strength as measured by the masthead indicators of two yachts prescribed by the Race Committee exceeds a 25kts wind speed and it is apparent that this wind speed is reasonably expected to be maintained. ie. allowance is made for a single or occasional gust.

### **14 PENALTY SYSTEM**

- 14.1 Penalties that apply are 44.1 and 44.2
- 14.2 For multi hulls rule 44.2 is changed so that the 720° turn is replaced by a 360° turn.

### **15 PROTESTS AND REQUESTS FOR REDRESS**

- 15.1 Protest forms are available at the TBYC clubhouse. Protests shall be delivered there within the protest time limit. The protest time limit is 90 minutes (1½ hr) after the last yacht has finished the last race of the day.
- 15.2 Notices will be posted within 30 minutes of the protest time limit to inform competitors of hearings in which they are parties or named as witnesses.

### **16 SCORING**

- 16.1 The Low Point scoring system of Appendix A will apply.
- 16.2 All race results throughout a Series will be deemed "interim" until after the last race of that Series whereby final handicapping will be calculated and overall results assigned based on a review of back calculations of handicaps if deemed necessary by the race Committee.
- 16.3 Details of number of races to count and the method of time calculation for the various series are:

Series	No of Races to Count	Time Calculations
--------	----------------------	-------------------



Club Championship	<p>Discard 2 worst scores from the 10 races completed, with 8 races to count.</p> <p>If a lesser number of races are conducted, 9 – 7 races, discard 2 worst scores.</p> <p>6 races, discard 1 worst score.</p> <p>5 races, no discards</p>	<p>Elapsed times multiplied by a Time Correction Factor (TCF) for each yacht for the CS designated races. The Club Championship Series (CS) is a separately assessed race series drawing on the original elapsed times recorded for each CS designated race held during the Spring &amp; Summer Series. A fixed allocated Handicap (AHC) is calculated for the CS for each yacht by taking the average of the yacht's 3 highest Back Calculated Handicaps (BCH) values recorded for the CS designated races.</p> <p><u>Note:-</u> Sternchasers are excluded from the Championship Series.</p>
Spring Pointscore & Summer Pointscore	<p>12 or more races completed, discard 3 worst scores</p> <p>11 – 7 races completed, discard 2 worst scores.</p> <p>6 – 5 races completed, discard 1 worst score.</p> <p>Less than 5 races – no discards.</p>	<p>For non Sternchaser races:- Elapsed times multiplied by a Time Correction Factor (TCF) for each yacht.</p> <p>For Sternchaser races:- Point scores are allocated in accordance with the order across the finish line:- ie. 1<sup>st</sup> place = 1 point etc.</p> <p>Series Point Scores are then the sum of all scores, including Sternchasers.</p>
Sternchaser Series	All races identified to count.	<p>Start times will be pre-calculated for each race based on a yacht's current point-score TCF handicap and shall take account of the expected duration of the race &amp; conditions.</p>
Autumn & Winter (when scheduled)	All races identified to count.	Elapsed times multiplied by a Time Correction Factor (TCF) for each yacht.

16.4 Lady Helmsperson Sternchaser Race:- Special Notes:-

- a) Each boat will sail under its Top Yacht calculated Allocated Handicap. No adjustment will be made.
- b) The boat must be physically Helm'd by a Lady at all times during the race. Shared Helming by 2 or more ladies is permitted.
- c) Any Boat not helm'd by a Lady for all or part of the race, shall still receive a point score for the race, but be relegated in order of finish behind all boats sailed according to the above rulings.

16.5 Tie Breaking:- Where a Series Point Score yields a tied 1<sup>st</sup>, or placing, the tie shall be resolved by summing the points scores for all individual races (no discards), and dividing this total by the number of races to yield the "Duty Score". The yacht with the lowest Duty Score shall be declared the winner. Should the Tie still fail to be broken, then the boat with the highest number of superior placings shall be declared the winner. (tie designated by suffix B – "bettered")

**17. SAFETY REGULATIONS**

A yacht that retires from a race shall notify the race committee as soon as possible

**18 REPLACEMENT OF CREW OR EQUIPMENT**

- 18.1 The race committee reserves the right to change the handicap of any competing yacht if there is a change of regular helmsperson or crew.
- 18.2 The Race Committee reserves the right to change the handicap of any competing yacht if there is a change of equipment.

**19 EQUIPMENT AND MEASUREMENT CHECKS**

- 19.1 A boat and/or its equipment may be inspected at any time for compliance with the sailing instructions and safety regulations
- 19.2 Competing Keelboats/Trailable boats shall comply with the Roads & Maritime NSW Safety Equipment Checklist – Open Waters as well as Category 6 requirements of Part 1 of AS Special Regulations. Competing yachts shall comply with all their Class Rules.

**20 OFFICIAL BOATS/SUPPORT BOATS**

No official or support boats will be in attendance. If any yacht is seen to be encountering any difficulties or calls for assistance, it is the responsibility of the skippers/owners of all competing boats to offer assistance.

## **21. RADIO COMMUNICATION**

- 21.1 A yacht whilst racing shall neither make nor receive radio communications not available to all yachts.
- 21.2 This restriction also applies to mobile telephones.
- 21.3 Keelboats and Trailerable boats are requested to log on and off with Eden Marine Rescue on VHF Channel 16, (or using the Marine Rescue Eden – Mobile Phone App.) and to monitor the official Club Channel VHF 72 for the duration of the event.

## **22. PRIZES**

Prizes shall be given as follows at the discretion of the TBYC Inc Committee, but shall in all cases be awarded to the entrant boat's owner.

## **23. DISCLAIMER OF LIABILITY**

- 23.1 Competitors participate in the events entirely at their own risk. See rule 4, Decision to Race.
- 23.2 Twofold Bay Yacht Club Inc. will not accept any liability for material damage or personal injury or death sustained in conjunction with or prior to, during, or after the event.

## **24. INSURANCE**

Each participating yacht shall be insured with valid third-party liability insurance with a minimum cover of \$2,000,000 per event or the equivalent.

## **25. SHORTENED COURSE**

- 25.1 Where circumstances require, the OOD may shorten the specified course if there is concern that the race may not be completed within the prescribed time-limit, or where sailing conditions are considered likely to become dangerous. This will be done at a specified rounding mark of the course being sailed. Competitors will be advised of a shortened course by the Race Committee's OOD representative via VHF Ch72. Please note it is the responsibility of all skippers to maintain radio coverage for the entire race.
- 25.2 The time limit outlined at Clause 13 of the TBYC SI's (4 hrs) shall remain in respect of all subsequent finishing yachts.

Note:- Where it is necessary to shorten a Sternchaser Race, the race will be converted to an elapsed corrected time series race by the Club Handicapper, and point scored accordingly. Subsequent planned Sternchaser Races will be renumbered, and where a shortened Sternchaser Race had been listed as a special event ie. Trophy, Ladies Skipper, that event designation will be applied to the next Sternchaser race in the program.

### Approximate distances in nautical miles between marks are:

From/To	CC	SB	RR	BT	NW	Finish
Start/QB	3.6	1.0	2.1	0.7	2.3	
SB	2.6		1.7	1.5	2.1	1.0
RR	2.5	1.7		2.1	0.8	2.1
CC		2.6	2.5	3.7	3.7	3.6
BT	3.7	1.5	2.1			0.7
NW	3.3	2.1	0.8	2.1		2.3





# Carboncopy

## Printing

37b Toalla Street, Pambula

**(02) 6495 7469**



*fast efficient creative*



*Photo Courtesy of Joanne Korner*

# MARINE RESCUE

NEW SOUTH WALES



## Volunteers saving lives on the water

### *Radio for help on*

VHF CH 16 (Distress and Calling Channel)  
27 MHZ CH 88 (24 HRS)

### *Monitoring*

VHF 16, 19, 81 (Repeater)  
HF 2524, 2182 (Distress)  
27 MHZ 88, 91

### **EDEN UNIT**

PO Box 284, Eden NSW 2551  
Phone: (02) 6496 2167 • Fax: (02) 6496 3589



## KEEL & TRAILABLE BOATS LONG COURSES - Course Flags

Numeral Pennant 1 to 9.

### Hazards:

#### Whale Spit Submerged Rock:

All yachts be aware that a submerged rock hazard exists off whale spit at approx. position 37° 05.679S 149° 53.940E, particularly at low tides. This hazard is marked with a NSW Maritime Cardinal Mark signaling all boats **must** keep clear to the north. This mark becomes a mark of the course.

Mussel Buoys: All yachts are advised to keep well clear of the black mussel buoys.

Bombora off Middle Head: All yachts advised that a partially submerged bombora exists below the navigation tower located on Middle Head.

### These courses use the following marks:

QB Start area end of the break-wall generally between break-wall light or club flag mast if being used and red spherical buoy.

Mark CC - TBYC fixed yellow buoy off Calle Calle Beach northeast of Central Head.

Mark SB - The Mark to be rounded is defined by the most Westerly of the 2 barges, or in its absence, its mooring buoy.

Mark RR - The red Reef Marker off the Chip Mill (Red Conical Can)

Mark BT TBYC fixed yellow buoy in Nullica Bay, off Boyd Town.

Mark NW Special Mark - the most seaward pylon with a yellow cross and light on top located adjacent to the Navy Wharf.

**Note:** When a Keel/Trailable course identifies use of the Naval Wharf (NW ) mark and Naval Operations are being conducted at the Wharf and the naval ships are flying Flag Bravo - a red flag with a dove tail in the trailing edge - from the mast head, all yachts must keep clear. In these circumstances, the mark rounding will change - the NW mark will be replaced with the RR mark.

### Club Marks locations are estimated positions only

Boydton	37° 05.555S	149° 53.003E
Stinky Barge	37° 04.449S	149° 54.205E
Red Reef Mark	37° 05.693S	149° 55.670E
Navy Wharf	37° 06.370S	149° 55.198E
Quandoa Point	37° 04.848S	149° 52.583E

**Note:** There is an additional mark located at Calle Calle in the vicinity of 37° 03.212S, 149°56.202E.

# CROW FAMILY SERVO

Trading As

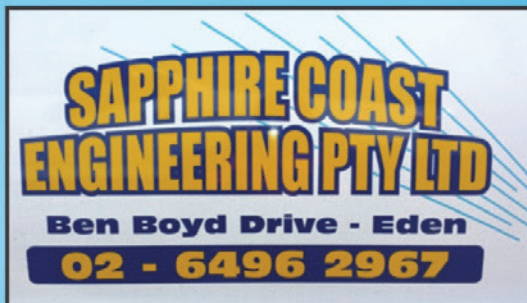
## MATILDA'S SHOP N GO

*Camping, Fishing, Oils, Batteries, Auto, Bait,  
Ice, Groceries, Organic Meat, Oysters & Much More*

Top of the Hill at 52 Mitchell Street, Eden

**Phone: 02 6496 1177**





## **PROUDLY SUPPORTING TWOFOLD BAY YACHT CLUB**

- ALL MACHINING
- EQUIPMENT REPAIRS
- STOCKIST OF STAINLESS STEEL WIRE AND FITTINGS
- SPECIALISING IN STAINLESS STEEL WELDING AND FABRICATION

**DAMIAN FOAT**

**MOBILE: 0428 447 450**

**EMAIL: [office@sapphirecoastengineering.com.au](mailto:office@sapphirecoastengineering.com.au)**

**WEB: [www.sapphirecoastengineering.com.au](http://www.sapphirecoastengineering.com.au)**





## COURSES

**Note** that in the tables below the codes for Rounding mean as follows:

*P* indicates that yachts will pass the mark leaving it to port. *S* indicates that Yachts will pass the mark leaving it to starboard. For all courses except #'s 2, 21, 22 & 23 (Stinky Barge Finishes), the Finish Line shall be the line between the Quarantine Bay Breakwater point Light and the White Paintmark on the rock at Quandoo Point.

### Course 1 Wind Direction E/SE Distance 11.6 NM

Mark	START	RR	QB	SB	BT	QB	RR	FINISH
Rounding	S	S	S	S	S	S	S	

### Course 2 Wind Direction S/SW Distance 10 NM

Mark	START QB	BT	SB	RR	SB	BT	FINISH SB	
Rounding		P	S	S	P	S		

### Course 3 Wind Direction E Distance 9.6 NM

Mark	START	RR	QB	SB	NW	FINISH		
Rounding		S	S	S	S			

### Course 4 Wind Direction SW Distance 9.6 NM

Mark	START	BT	CC	RR	SB	FINISH		
Rounding		P	S	S	P			

### Course 5 Wind Direction E Distance 10 NM

Mark	START	RR	CC	RR	FINISH			
Rounding	S	P	S	P				

### Course 6 Wind Direction SW Distance 11.3 NM

Mark	START	BT	SB	QB	NW	QB	BT	SB	FINISH
Rounding		P	P	P	P	P	P	P	

### Course 7 Wind Direction SW Distance 10.8 NM

Mark	START	BT	CC	RR	SB	BT	FINISH	
Rounding		P	S	S	P	S		

### Course 8 Wind Direction S,SW Distance 11.1 NM

Mark	START	BT	RR	SB	QB	BT	RR	SB	FINISH
Rounding		P	P	P	P	P	P	P	

### Course 9 Wind Direction N, NE, NW Distance 11 NM

Mark	START	SB	RR	QB	SB	QB	SB	NW	FINISH
Rounding	S	S	S	S	S	S	S	S	

### Course 10 Wind Direction NE Distance 10.8 NM

Mark	START	SB	RR	NW	QB	SB	RR	NW	FINISH
Rounding	S	S	S	S	S	S	S	S	

**Course 11 Wind Direction S, SW Distance 9.4 NM**

Mark	START	BT	SB	QB	BT	SB	QB	BT	SB	FINISH
Rounding	P	P	P	P	P	P	P	P	P	

**Course 12 Wind Direction N, NE Distance 10.4 NM**

Mark	START	SB	BT	SB	NW	SB	BT	FINISH
Rounding		S	S	S	P	P	S	

**Course 13 Wind Direction NE Distance 9.6 NM**

Mark	START	SB	RR	CC	BT	FINISH		
Rounding		S	P	P	S			

**Course 14 Wind Direction N Distance 11.2 NM**

Mark	START	SB	NW	CC	RR	FINISH		
Rounding		S	P	S	S			

**Course 15 Wind Direction N Distance 10.8 NM**

Mark	START	SB	RR	CC	NW	FINISH		
Rounding		S	P	P	S			

**Course 16 Wind Direction E Distance 11.3 NM**

Mark	START	SB	BT	QB	NW	QB	SB	BT	FINISH
Rounding		S	S	S	S	S	S	S	S

**Course 17 Wind Direction NE Distance 11.1 NM**

Mark	START	SB	RR	BT	QB	SB	RR	BT	FINISH
Rounding		S	S	S	S	S	S	S	

**Course 18 Wind Direction N OR NE Distance 9.4 NM**

Mark	START	SB	BT	QB	SB	BT	QB	SB	BT	FINISH
Rounding	S	S	S	S	S	S	S	S	S	

**Course 19 Wind Direction S Distance 8 NM**

Mark	START	C	BT	C	RR	C	SB	C	FINISH
Rounding	S	S	P	S	S	S	P	S	

**Course 20 Wind Direction N Distance 9.4 NM**

Mark	START	C	SB	C	RR	C	NW	C	BT	C	FINISH
Rounding	S	P	S	P	P	P	TACK	P	S	P	

**Course 21 Wind Direction E/NE Distance 10 NM**

Mark	START QB	CC	RR	BT	FINISH SB			
Rounding	S	S	S	S				

**Course 22 Wind Direction N/NE Distance 7.5 NM**

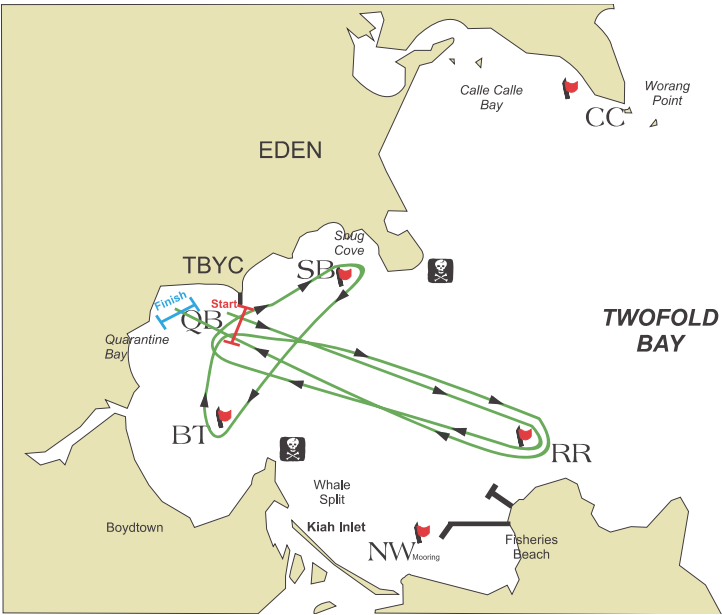
Mark	START QB	SB	RR	SB	BT	FINISH SB		
Rounding	S	S	P	P	S			

**Course 23 Wind Direction E/SE Distance 8 NM**

Mark	START QB	RR	BT	RR	FINISH SB			
Rounding	S	S	P	P				



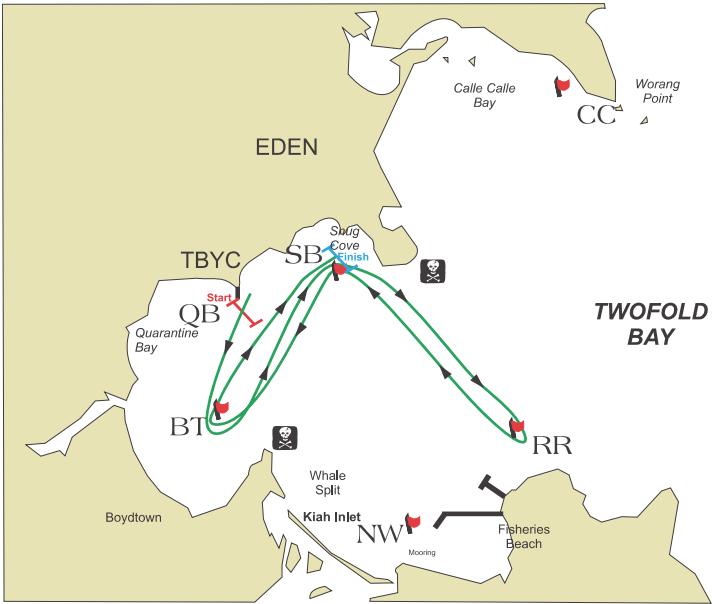
Mark	START	RR	QB	SB	BT	QB	RR	FINISH
Rounding	S	S	S	S	S	S	S	



Wind Direction E/SE  
**Course 1**  
 Distance 11.6 NM



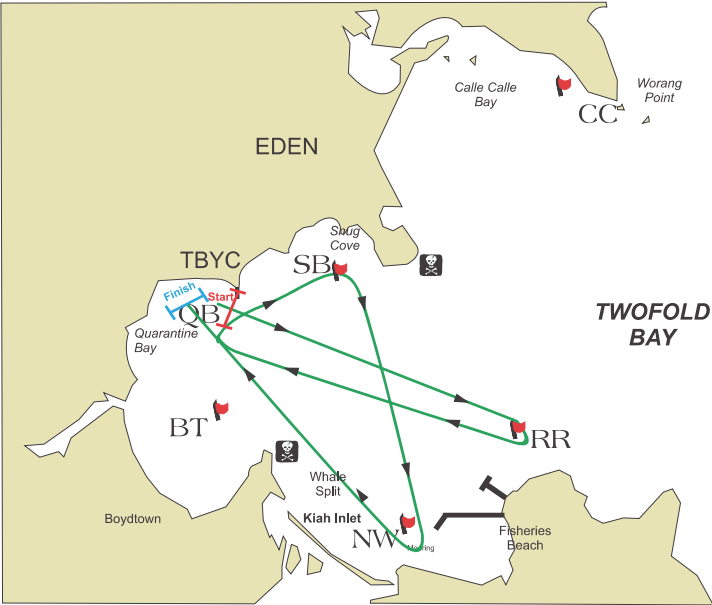
Mark	START QB	BT	SB	RR	SB	BT	FINISH SB	
Rounding		P	S	S	P	S		



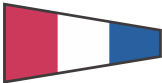
Wind Direction S/SW  
**Course 2**  
 Distance 10 NM



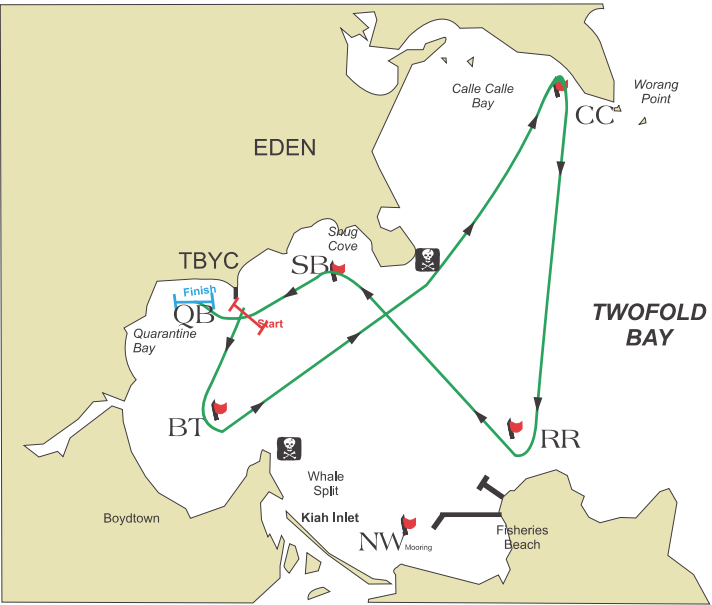
Mark	START	RR	QB	SB	NW	FINISH		
Rounding		S	S	S	S			



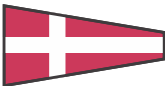
Wind Direction E  
 Course 3  
 Distance 9.6 NM



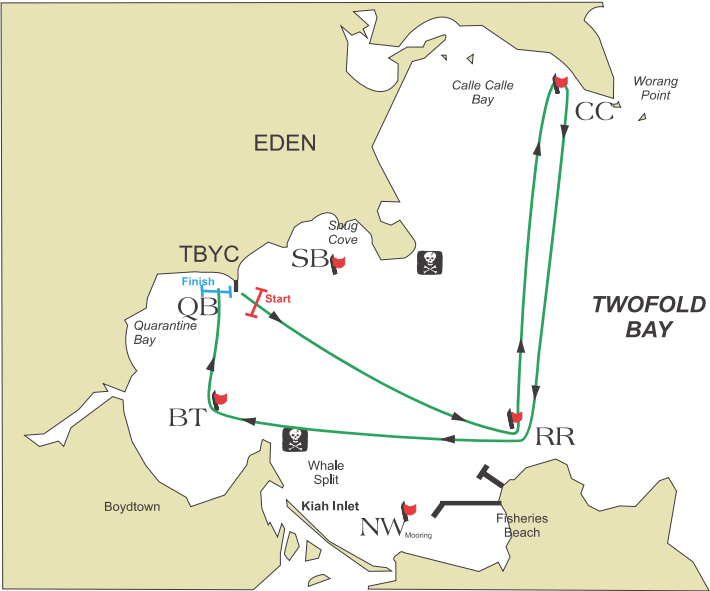
Mark	START	BT	CC	RR	SB	FINISH		
Rounding		P	S	S	P			



Wind Direction SW  
 Course 4  
 Distance 9.6 NM



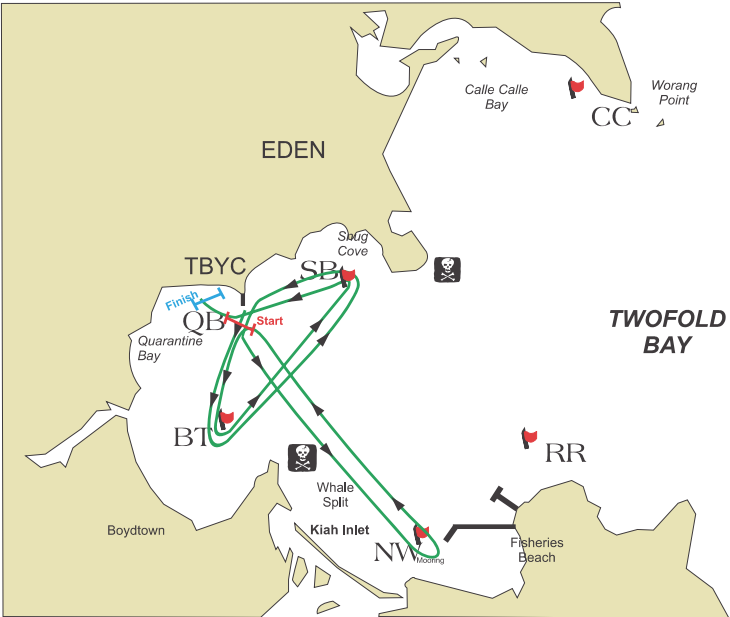
Mark	START	RR	CC	RR	FINISH			
Rounding	S	P	S	P				



**Wind Direction E**  
**Course 5**  
 Distance 10 NM



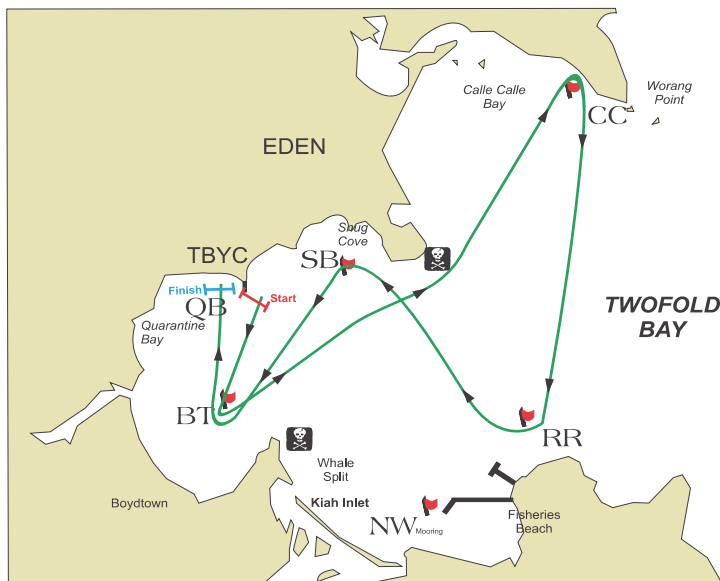
Mark	START	BT	SB	QB	NW	QB	BT	SB	FINISH
Rounding		P	P	P	P	P	P	P	



**Wind Direction SW**  
**Course 6**  
 Distance 11.3 NM



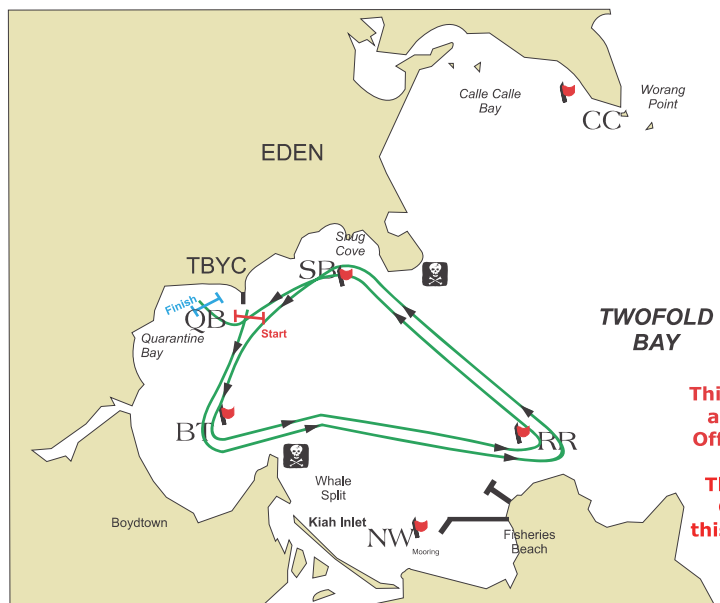
Mark	START	BT	CC	RR	SB	BT	FINISH	
Rounding		P	S	S	P	S		



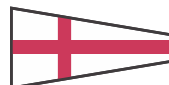
Wind Direction SW  
Course 7  
Distance 10.8 NM



Mark	START	BT	RR	SB	QB	BT	RR	SB	FINISH
Rounding		P	P	P	P	P	P	P	

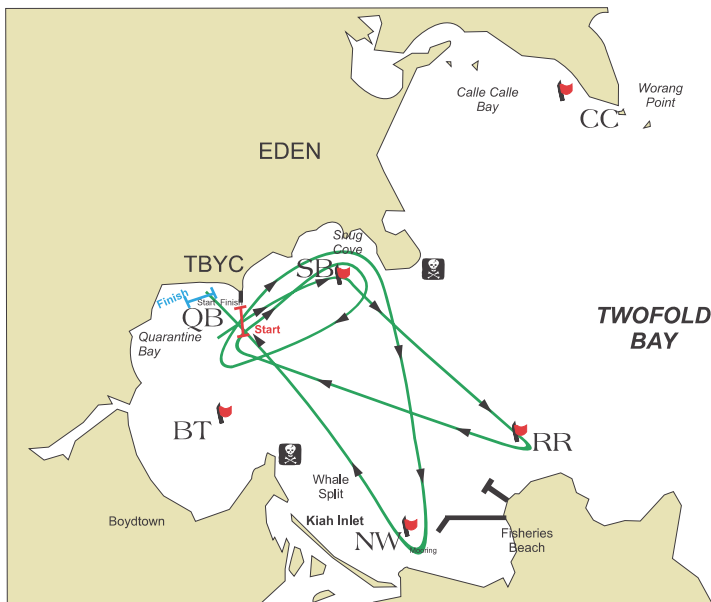


Wind Direction S, SW  
Course 8  
Distance 11.1 NM



**This course may be shortened at the discretion of the Race Officer to 1 circuit around the marks, rather than 2. The Finish will remain at the QB Finish Line as shown. If this occurs, the course will be called as, eg. 8 – shortened, 1 circuit only**

Mark	START	SB	RR	QB	SB	QB	SB	NW	FINISH
Rounding	S	S	S	S	S	S	S	S	

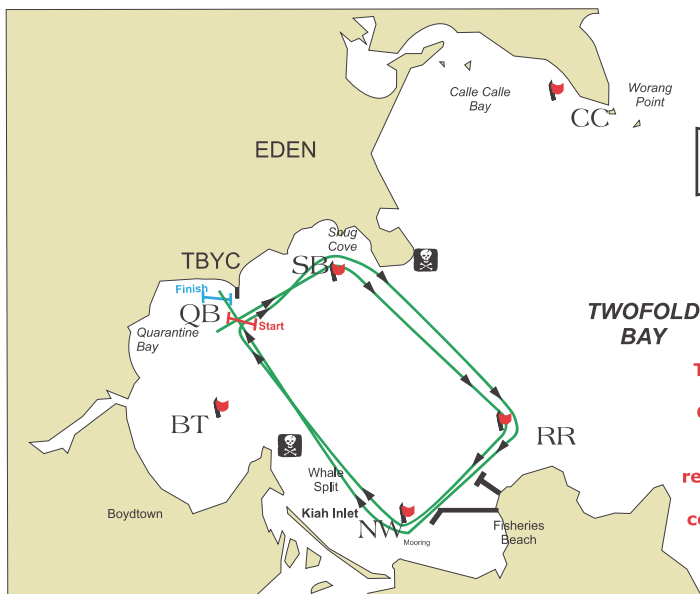


Wind Direction N, NE  
Course 9  
Distance 11 NM



N.B Red Reef mark  
may be substituted  
for Navy Wharf mark  
Course will be  
10R Red Reef -  
10.5 NM

Mark	START	SB	RR	NW	QB	SB	RR	NW	FINISH
Rounding	S	S	S	S	S	S	S	S	

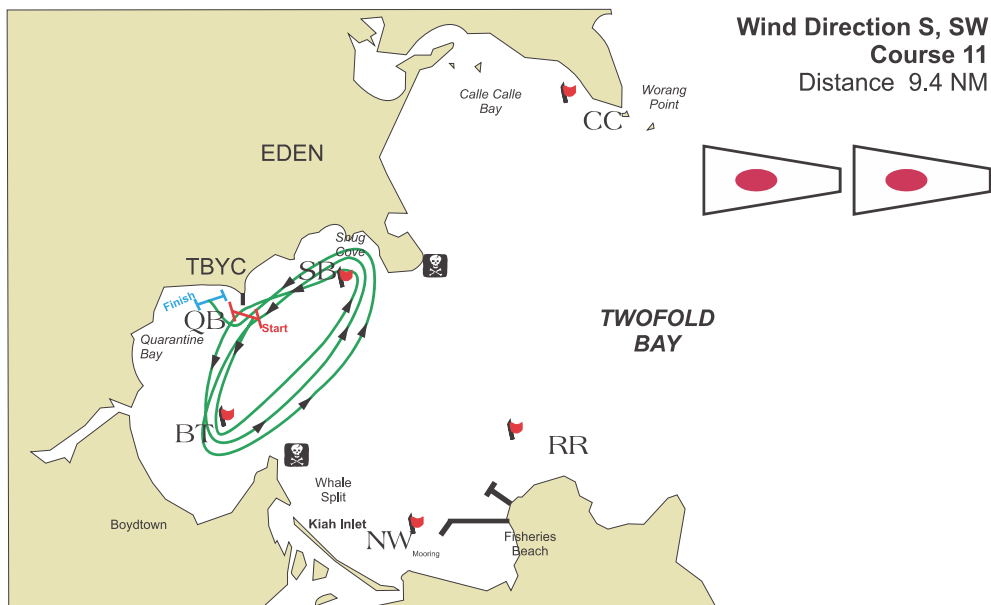


Wind Direction NE  
Course 10  
Distance 10.8 NM

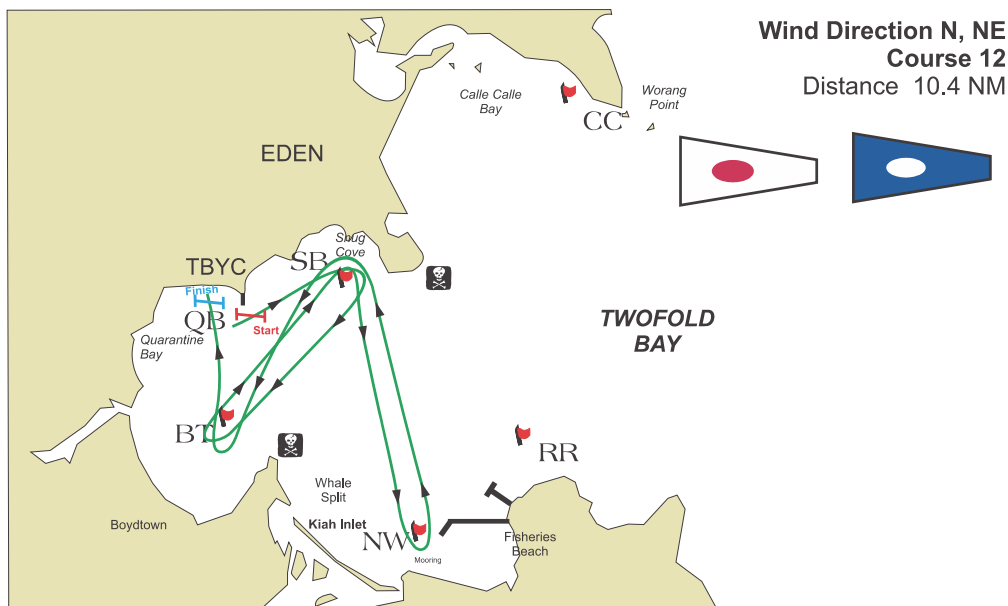


This course may be shortened  
at the discretion of the Race  
Officer to 1 circuit around the  
marks, rather than 2.  
rather than 2. The Finish will  
remain at the QB Finish Line as  
shown. If this occurs, the  
course will be called as, eg. 10  
- shortened, 1 circuit only.

Mark	START	BT	SB	QB	BT	SB	QB	BT	SB	FINISH
Rounding	P	P	P	P	P	P	P	P	P	

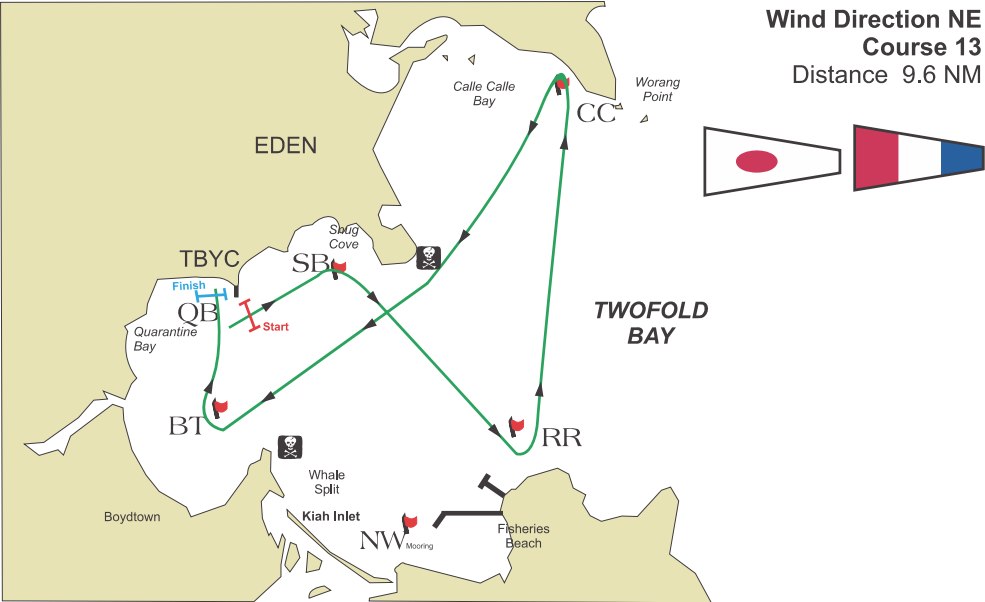


Mark	START	SB	BT	SB	NW	SB	BT	FINISH
Rounding		S	S	S	P	P	S	

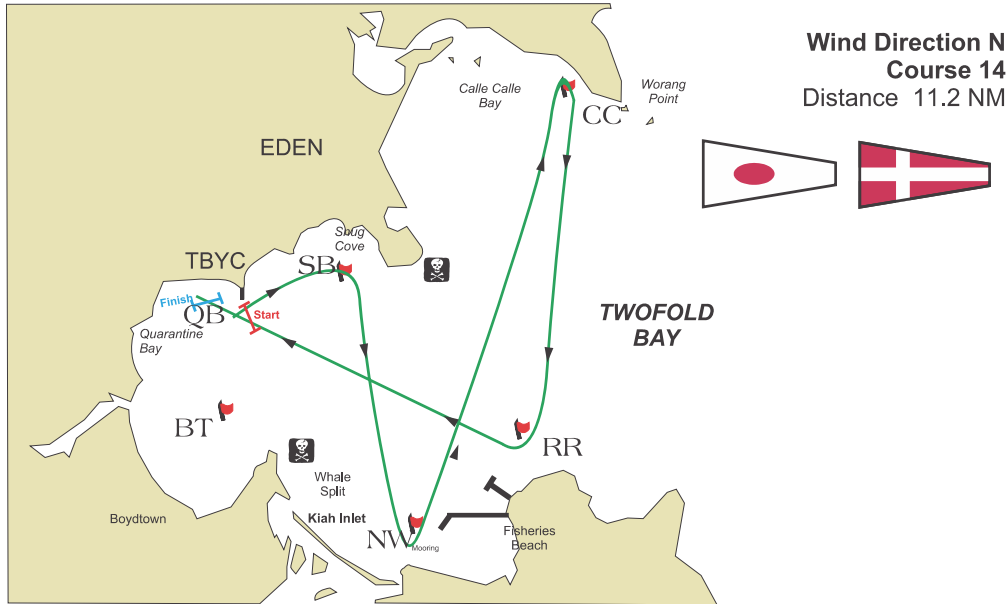




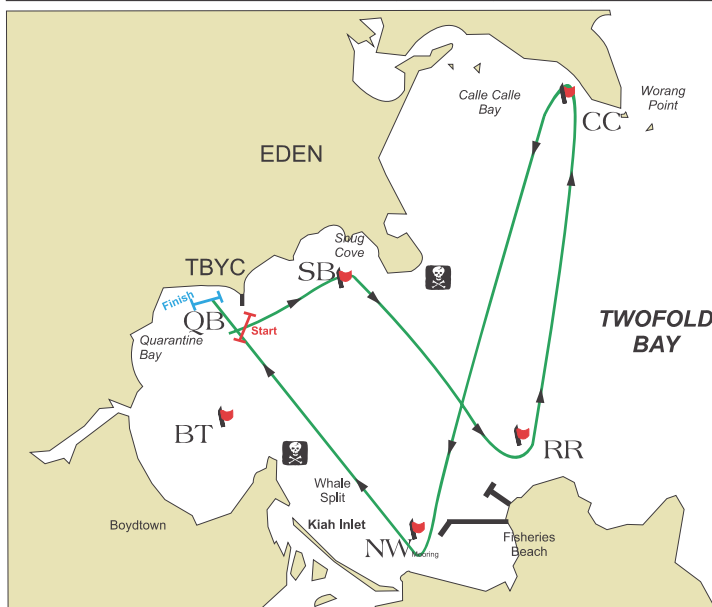
Mark	START	SB	RR	CC	BT	FINISH		
Rounding		S	P	P	S			



Mark	START	SB	NW	CC	RR	FINISH		
Rounding		S	P	S	S			



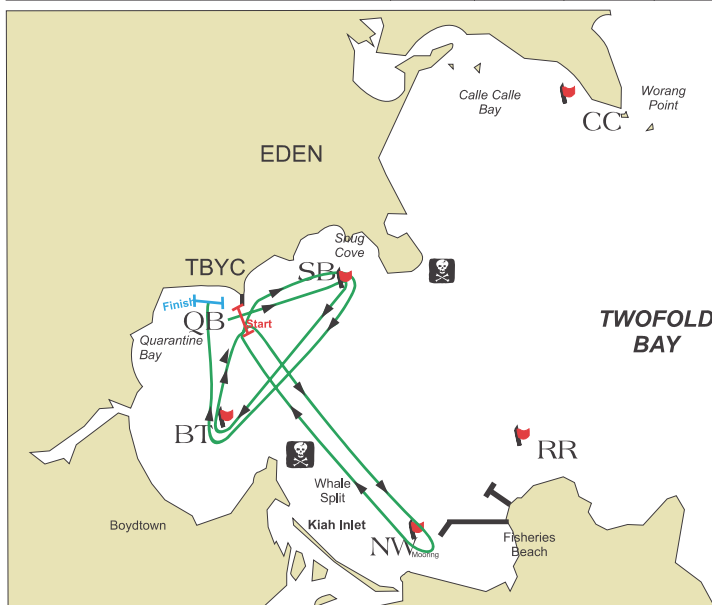
Mark	START	SB	RR	CC	NW	FINISH		
Rounding		S	P	P	S			



**Wind Direction N**  
**Course 15**  
 Distance 10.8 NM



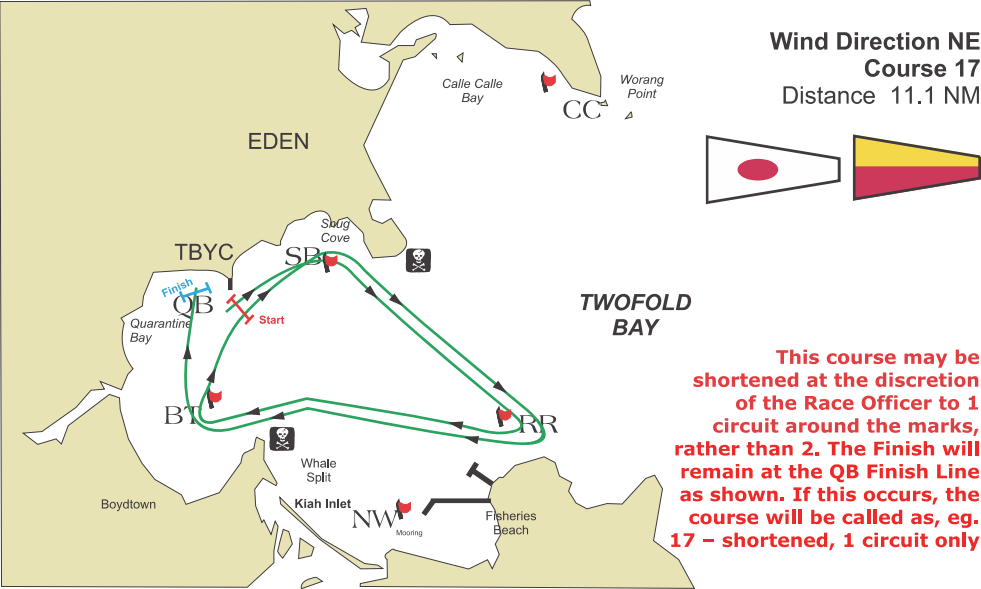
Mark	START	SB	BT	QB	NW	QB	SB	BT	FINISH
Rounding		S	S	S	S	S	S	S	



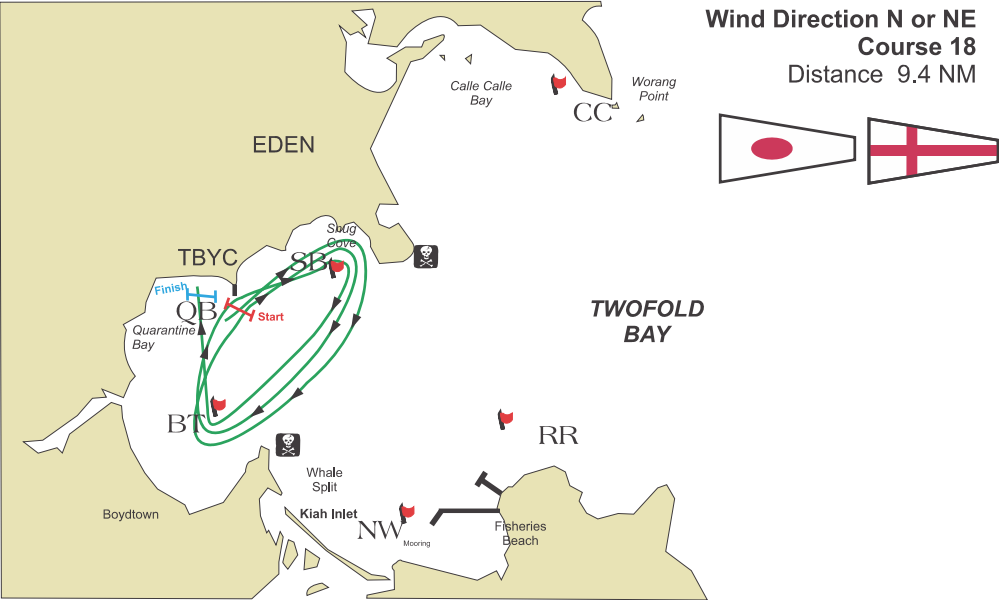
**Wind Direction E**  
**Course 16**  
 Distance 11.3 NM



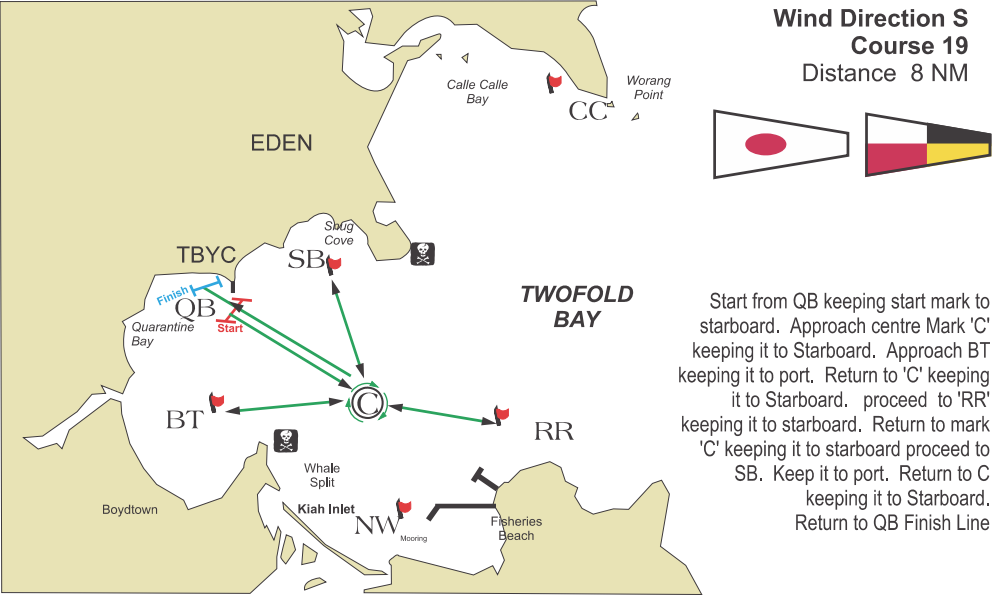
Mark	START	SB	RR	BT	QB	SB	RR	BT	FINISH
Rounding		S	S	S	S	S	S	S	



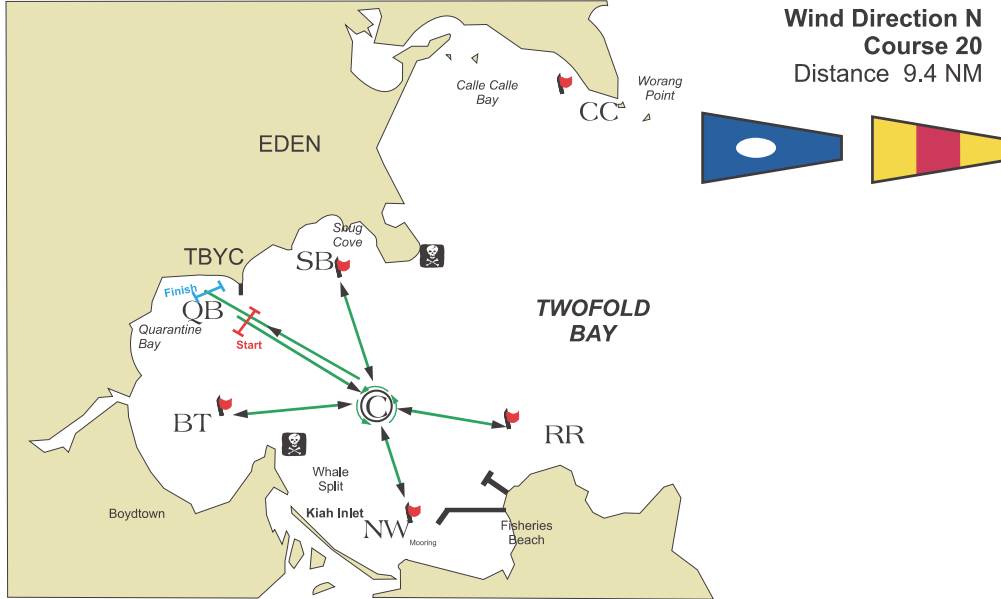
Mark	START	SB	BT	QB	SB	BT	QB	SB	BT	FINISH
Rounding	S	S	S	S	S	S	S	S	S	



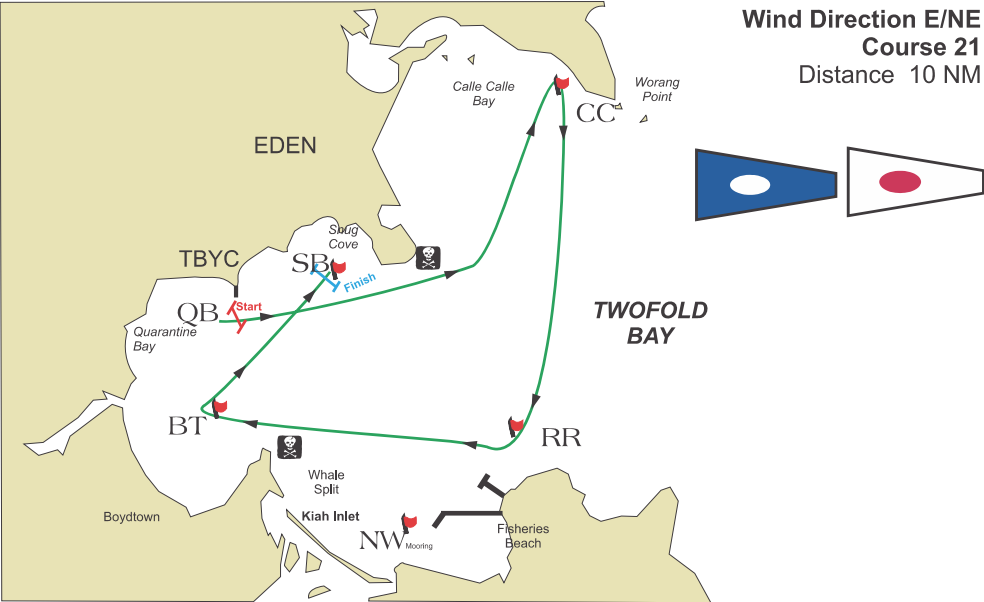
Mark	START	C	BT	C	RR	C	SB	C	FINISH
Rounding	S	S	P	S	S	S	P	S	



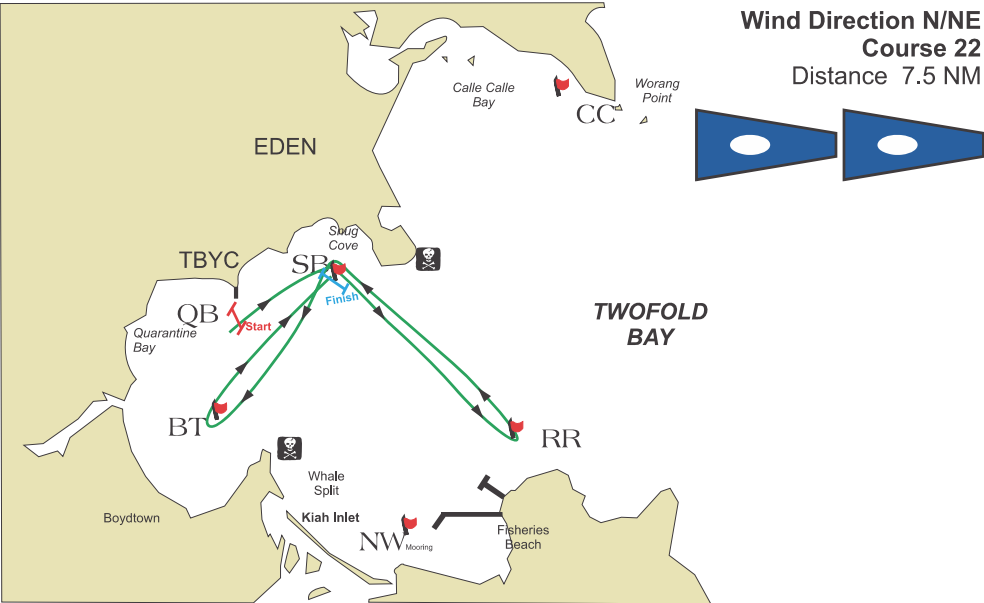
Mark	START	C	SB	C	RR	C	NW	C	BT	C	FINISH
Rounding	S	P	S	P	P	P	TACK	P	S	P	



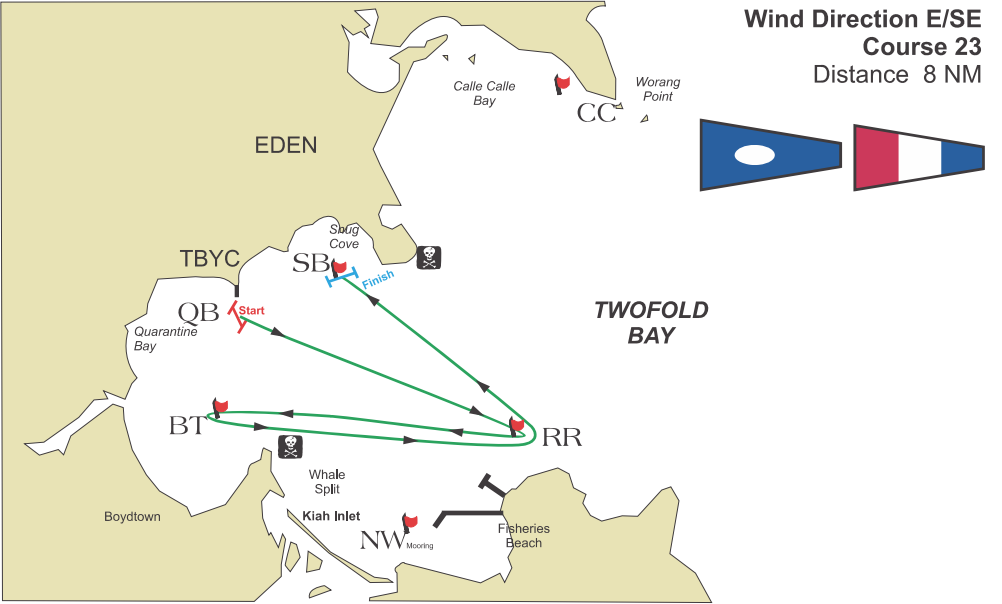
Mark	START QB	CC	RR	BT	FINISH SB			
Rounding	S	S	S	S				



Mark	START QB	SB	RR	SB	BT	FINISH SB		
Rounding	S	S	P	P	S			



Mark	START QB	RR	BT	RR	FINISH SB			
Rounding	S	S	P	P				





Start at Quarantine Bay keep northern headlands to port. Proceed in a northerly direction to Lennards Island. When the highest point of Lennards Island is at 270 degrees tack to windward and return to Quarantine Bay  
Distance 6nm each way.

## Course 24 - Lennards Island Passage

Start at Quarantine Bay keep northern headlands to port. Proceed in a northerly direction to Lennards Island.

When the highest point of Lennards Island is at 270 degrees tack to windward and return to Quarantine Bay

Distance 6nm each way.

Wind Direction - Any Easterly

The map shows the coastline of Eden and Twofold Bay. A green line indicates the sailing route. It starts at Quarantine Bay (QB), marked with a red flag and labeled 'Start'. The route goes north along the coast, passing Snug Cove (SB) and Calle Calle Bay (CC). It then turns east towards Worang Point, where it tacks back south. The route returns to Quarantine Bay, marked with a blue flag and labeled 'Finish'. Various other locations are marked with flags or symbols: TBVC, BT, Whale Split, Kiah Inlet, NW, Mooring, Fisheries Beach, RR, and a skull-and-crossbones symbol near Snug Cove. The land area is colored tan, and the water area is white.

## **TBYC - Sailing Notes**



*Photo Courtesy of Joanne Korner*