



SAILING INSTRUCTIONS

1. RULES

Sailing will be governed by the World Sailing Racing Rules of Sailing 2021-2024 (RRS), the prescriptions and special regulations of Australian Sailing, the rules of the individual classes (except as any of these are altered by the sailing instructions) and the sailing instructions.

Attention is drawn to Fundamental Rules RRS 3 Decision to Race – *‘the decision to participate in a race or to continue racing is hers alone’*

All persons on board a boat while racing shall be members of a Club affiliated to Australian Sailing and have an active Australian Sailing number. You can check your AS number here www.sailing.org.au/member-finder/.

2. ENTRIES

- 2.1. Entries will be accepted only by completion of the Sign on Sheet for normal Saturday racing and the online registration through the SPASC revSPORT website for specific SPASC Regattas.
- 2.2. For regattas all participants whose entries have been accepted must complete registration at Race Headquarters at Speers Point Amateur Sailing Club Inc. before racing.
- 2.3. Entries will only be accepted with payment of Racing Fees. Fees paid weekly are to be placed at Race Headquarters, or b) via Annual Race Fees.

3. RACE HEADQUARTERS

Race Headquarters is located upstairs in the Speers Point Amateur Sailing Club Clubhouse. The Official Notice Board will be situated at Race headquarters.

4. NOTICES TO COMPETITORS

Notices to competitors will be posted on the Official Notice Board located upstairs in the SPASC Clubhouse.

5. CHANGES TO SAILING INSTRUCTIONS

Any changes to these sailing instructions will be described at the Competitors meeting.

6. SIGNALS MADE ASHORE

Signals made ashore shall be flown from the flag mast outside Race Headquarters.

7. SCHEDULE OF EVENTS

- 7.1. The schedule of races will be described in the Sailing Program published by SPASC
- 7.2. These Sailing Instructions apply to the accumulative Pointscore competition, the Club Championship series as well as the Presidents Cup.

8. RACING

- 8.1. Racing is scheduled as below:

RACE DAY	WARNING SIGNAL
Saturdays	Not before 1.55 p.m.

- 8.2. There will be a competitor's meeting at around 1:00 pm on Saturdays in the Clubhouse, or on the grounds adjacent to SPASC clubhouse.

9. RACING DIVISIONS

- 9.1. **Individual Classes** – Any class of boat may sail as a separate class if there is a minimum of six boats of that class registered with the Club.
- 9.2. **Miscellaneous Classes** – Where there are insufficient boats to form an **individual** class, those boats will be divided into divisions as described in "Class of Boat within Divisions" and compete with each other.
- 9.3. Boats of all classes will be allocated to a start at the discretion of the Race Committee.
- 9.4. Divisions to be sailed and number of laps may be altered at the competitors meeting

9.5. Results will be calculated for each division and annual prizes will be awarded for the Pointscore competition and Club Championship series as well as the winner of the Presidents Cup.

10. RACING AREA

The racing area will be Cockle Bay, Warners Bay and Marmong Point.

11. COURSES

- 11.1. The course configuration will be triangles and windward returns, generally including
- A start finish line (off clubhouse or a start/finish boat)
 - a Home buoy in Cockle Bay on near start/finish boat)
 - a buoy south of Marmong Point
 - a buoy in Warners Bay
- 11.2. The course to be sailed by each group of boats will be announced at the competitors meeting.
- 11.3. Courses may be shortened at any mark by displaying the "S" flag at that mark - Boats should proceed from that mark directly to the finishing line. Courses may be shortened at the home mark by displaying the "S" flag and two sound signals and boats should proceed directly through the finishing line. This amends RRS 32.2
- 11.4 The race can be abandoned by displaying the code flag N on the support boat or the clubhouse or both. Repetitive sound signals may be given. Boats on the course are to return to shore. This changes RRS 32.1.

12. MARKS

- 12.1. The Starting and Finishing marks will consist of a buoy flying code flag "O".
- 12.2. Marks shall be as shown in Addendum A or as described in the competitors meeting.
- 12.3. For regattas a clearance mark may be laid near the windward buoy using stick marks flying a pink flag.

13. THE START

13.1. Scratch Starts from Clubhouse –

- 13.1.1. Races shall be started as follows, which changes RRS 26 and RRS 30.
- 13.1.2. An electronic timer board, displaying minutes and seconds will be used to start races.

Title	Display (visual and sound) before start signal for the first start	Display (visual and sound) for subsequent starts
Warning	5.00 + 1 sound	
Preparatory Signal	4.00 + 1 sound	
	3.00	3.00 + 1 sound (start of previous race)
	2.00	2.00
	1.00 + 1 sound	1.00 + 1 sound
Start	0.00 + 1 sound	0.00 + 1 sound

- 13.1.3. The warning signal for each succeeding class/division shall be the starting signal for the preceding class. The starting order of each group of boats will be announced at the competitors meeting.
- 13.1.4. Times shall be taken from the visual signals of the electronic timer; the failure of a sound signal shall be disregarded.
- 13.2. **Scratch Starts on Water** – Races shall be started in accordance with RRS 26. or as described by the Officer of the Day.
- 13.3. **Handicap Starts**
- 13.3.1. A handicap start means that boats will start off a handicap which is based on a back-calculated yardstick on an estimated race time of 100 minutes, rounded to the nearest minute, with the limit boat starting first and the scratch boat starting last.
- 13.3.2. All handicap starts will be from the Clubhouse.
- 13.3.3. Boats will start in accordance with their handicap times as displayed in the clubhouse at the competitor briefing
- 13.3.4. The starting sequence for the first limit boat start time shall be in accordance with Section 13.1.2.

13.3.5. Once the electronic timer board reaches 0.00 the limit boat is allowed to start. A count up time will also commence. Subsequent boats will start when their handicap time first appears during the count up."

13.4. Boats whose preparatory signal has not been made shall keep clear of the starting area...

13.5. A boat shall not start later than 10 minutes after her starting signal

14. THE START LINE

14.1. **Scratch Starts from Clubhouse including Handicap races** – The start line will be between the orange flag displayed on the clubhouse and the starting mark.

14.2. **Scratch Starts on Water** – The start line will be between an orange flag on the race committee boat at the starboard end and the port-end starting mark.

15. RECALLS

15.1. Individual recalls shall be signaled in accordance with RRS 29.1.

15.2. General recalls will be signaled in accordance with RRS 29.2 except that when a General Recall has been signaled for a group, the new preparatory signal for that group shall be the start of the last designated group.

16. THE FINISH

The finishing line will be between a staff displaying a blue flag or shape on the Clubhouse or Committee boat and the finishing mark.

17. TIME LIMIT

The time limit will be three hours for all classes. Boats failing to finish within 30 minutes after the first boat in their class/division finishes or within the time limit, whichever is the later, will be scored 'Did Not Finish'. If no boat in their class/division finishes within the time limit, the race committee shall abandon the race. This changes RRS 35.

18. PROTESTS

18.1. Protests shall be written on forms available at the Club and delivered there within one hour after the time of the finish of the last boat in the class. There is no protest fee

18.2. Protest notices will be posted within 30 minutes of the protest time limit to inform competitors where and when there is a hearing in which they are parties to a hearing or named as witnesses.

19. SCORING – CLUB CHAMPIONSHIPS

19.1. The Low Point Scoring System, RRS Rule A9 will apply, modified so that a boat that did not start shall be scored points for the finishing place one more than the number of boats entered in the series at the time of the race.

19.2. Seven races are scheduled, of which four races shall be completed to constitute a series.

19.3. When 5 or more races have been completed, a boat's series score will be the total of her race scores excluding her worst score.

19.4. Financial members only will be allotted Club Championship points.

19.5. Race placings for all Divisions will be obtained by using the Speers Point Amateur Sailing Club yardstick.

20. SCORING – POINTSCORE COMPETITION

20.1. The Low Point Scoring System, RRS Rule A9 will apply, modified so that a boat that did not start shall be scored points for the finishing place one more than the number of boats entered in the series at the time of the race.

20.2. All Point Score and Club Championship races on the sailing program count in this competition.

20.3. Race placings for all Divisions will be obtained by using the Speers Point Amateur Sailing Club handicap.

20.4. Yachts must be configured in rig and crew for their allotted Class VYC Yardstick, or a Yardstick and handicap will be assigned to them at the sole discretion of the race committee.

20.5. In races with a handicap start, competitors' places shall be determined by the order in which they cross the finish line.

21. SAFETY

21.1. A member of each crew is required to sign on up to 30 minutes before each race using the sign on/off forms provided at Race Headquarters.

- 21.2. The sign-on/sign-off forms may be part of the Entry forms completed by all skippers racing in the session as provided at Race Headquarters.
- 21.3. If it is indicated at the competitors meeting in Section 8.2 that sign-off is required for the day's racing session, competitors signing on for the racing session must sign off after each day's racing session within one (1) hour after the last yacht finishes using the sign off forms provided at Race Headquarters
- 21.4. Entrants in breach of this instruction (Section 20) shall be disqualified.

22. INDEMNITY

- 22.1. Competitors participate in the regatta entirely at their own risk. See RRS 3, 'Decision to Race', which states "**The responsibility for a boat's decision to participate in a race or to continue racing is hers alone**".
- 22.2. Where sailors are not 18 years of age or more, their parent/guardian must sign the sign-on form and this constitutes consent for participation of a minor.
- 22.3. The Organising Authority and the host sailing clubs, their officers, members, servants and agents accept no responsibly in respect of loss of life, personal injury or loss or damage to property which may be sustained by reason of their participation or intended participation in the Event or howsoever arising in connection with the Event.
- 22.4. The Race Committee reserves the right to refuse an entry or withdraw a previously given acceptance of an entry.

23. RISK NOTIFICATION

Speers Point Amateur Sailing Club Inc. warns that participation in events at the Club involves risk of personal injury / death. The risk of injury/death can result from but is not limited to the following scenarios: attack from or injury caused by marine fauna; collision with participants; fixtures, boats, vehicles, third parties; falls, slips; being struck by objects/other participants; suffering physiological symptoms including, but not limited to, heart attacks, heat exhaustion, dehydration; drowning or being struck by lightning.

24. PERSONAL BUOYANCY

At all times whilst on water all sailors shall wear Standards Australia approved personal flotation devices, of either PFD1, PFD2 or PFD3 type, in accordance with RRS YA Specific Regulations Part 2, Specific Regulations 5.

25. WIND SPEED LIMIT

Racing will be abandoned for all classes when the average wind speed exceeds 25 knots for a minimum of 30 seconds or a gust of 30 knots or above is observed, or at the discretion of the Race Committee.

26. EQUIPMENT AND MEASUREMENT CHECKS

A boat or equipment may be inspected at any time for compliance with the class rules and sailing instructions.

27. OFFICIAL BOATS

Official boats will be marked as follows – 'SPASC' or display a SPASC burgee.

28. VISITING BOATS

Visiting crews and boats may take part in any race conducted by the Club, to a maximum of three race days, or at the discretion of the Race Committee.

29. REPLACEMENT OF CREW OR EQUIPMENT

- 29.1. Unless approved by the Race Committee, a skipper and boat combination must stay constant throughout the season to accumulate points in Club Championship and Point Score competitions.
- 29.2. If however the skipper changes to another boat within the same class/division, points will accumulate with the skipper, and continue while s/he sails within that class/division, but not if s/he changes to another class/division.
- 29.3. In the latter case all points accumulated before the change will be the total to that point. All points accumulated after the change will become a new competition total and will not be added to the first total.

30. AVERAGE POINTS

- 30.1. Average points may be awarded on written application to the race committee when a boat competes in a Club-approved Class Association event away from the Club which coincides with a Club Point Score, or at the discretion of the Race Committee, e.g. when performing support boat or similar "at home" duties.

30.2. The average points awarded will be the average of points scored for the best 3 scores in the season within the Series.

30.3. If the Club race is abandoned, no points will be scored even though a race may have been sailed.

30.4. The awarding of average points will not entitle the boat concerned to a handicap change on the day concerned.

31. CLASSES OF BOAT WITHIN DIVISIONS AND COURSES:

Division 3: Lasers and miscellaneous monohulls with yardstick >110.

Division 4: Tasar and miscellaneous monohulls with yardstick <110.







Division 5: Miscellaneous multihulls <16 feet

Division 6: Miscellaneous multihulls >16 feet

Division 7: Gold Fleet Laser 4.7, Open Skiff, Optimist and miscellaneous monohulls with yardstick >124.

Division 8: Silver Fleet

COURSES (please read together with LOCATION AND SEQUENCE OF MARKS below)

<i>Division</i>	<i>Course</i>	<i>Marks</i>
Division 3		Orange inflatable buoys
Division 4		Orange inflatable buoys
Division 5		Orange inflatable buoys
Division 6		Orange inflatable buoys
Division 7		Red spheres (placed on shorter course)
Division 8		Red spheres (placed on shorter course)

32. LOCATION AND SEQUENCE OF MARKS

Courses will be designated as port or starboard courses – P or S; plus a number indicating on which leg of the triangle the windward return(s) occurs.

On port courses leave marks to port (ie anticlockwise)

On Starboard courses leave marks to starboard (ie round clockwise)

Marks will generally be located as indicated on the '**Course Diagram**' and include:

Start/Finish line – located off club house
Marmong Point – located generally south-east of Marmong Point
Warners Bay – located in Warners Bay
Home - located in Cockle Bay

For Gold Fleet and Silver Fleet a shorter course may be laid using additional marks, or the full course may be sailed with fewer laps. This decision will be made depending on the participants and anticipated sailing conditions, and the course will be described at the Competitors Meeting.

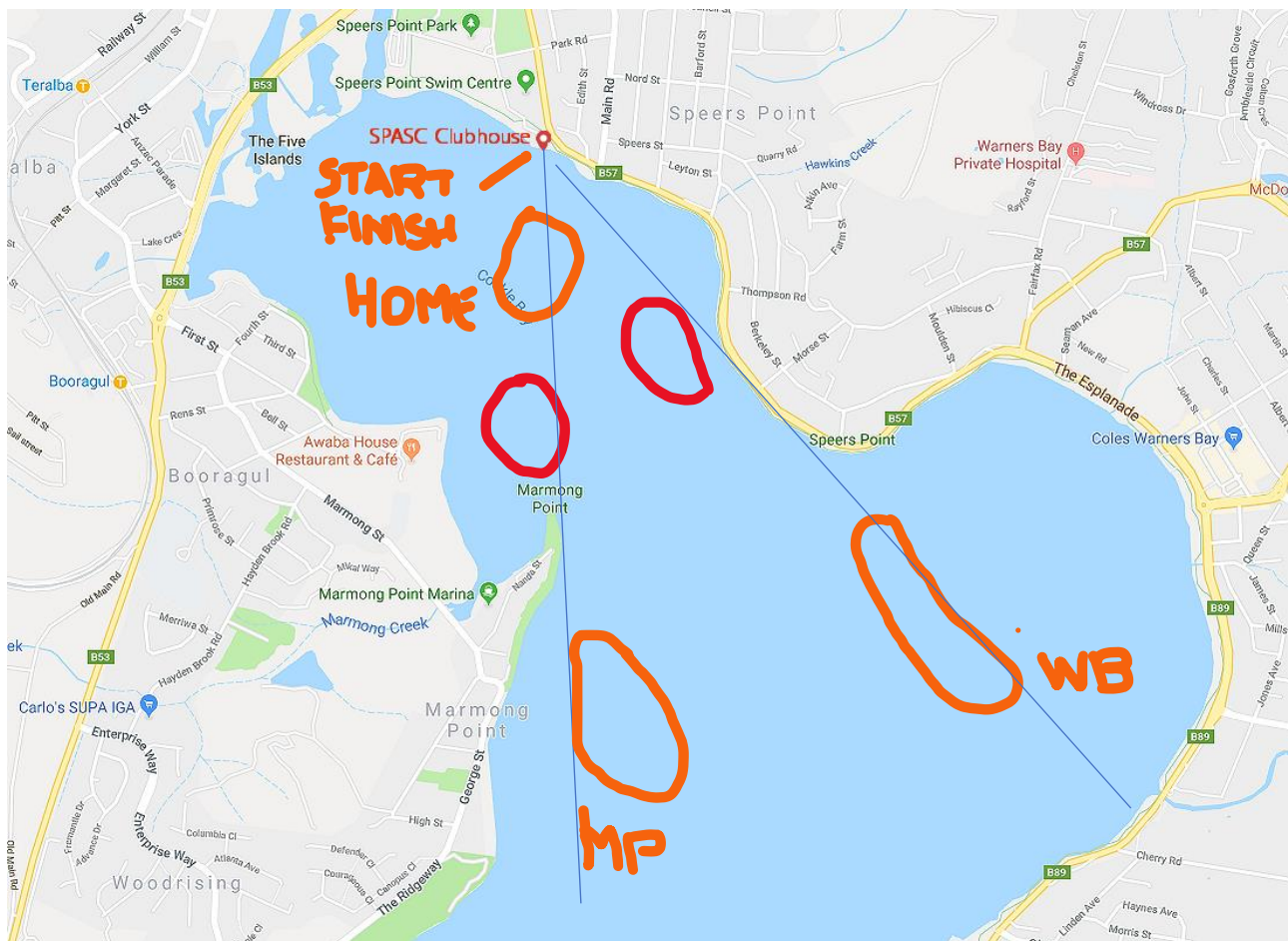
For example, for Division 4, triangle, **windward return**, triangle courses could be as follows:

- 'S2 '** Start, Warners Bay, Marmong, Home – **Warners Bay, Marmong** – Home, Warners Bay, Marmong, Finish
- 'P3 '** Start, Marmong, Warners Bay, Home – **Warners Bay, Home** – Marmong, Warners Bay, Finish

COURSE DIAGRAM

Showing general locations for Marks for Divisions 2,3,4 and 5 (shown in orange);

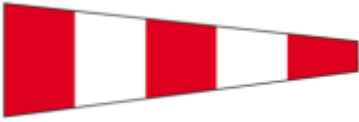
And possible location of marks for shorter course for Gold and Silver fleets (shown in red)



Note: Warners Bay and Marmong Point marks should be kept within line of sight to Clubhouse

Signals: Commonly used signals as per RRS

AP – Postponement



Orange Flag – starting line



N – Abandonement



Blue Flag – finish line



P - Preparatory Signal



X – Individual Recall



First Substitute – General Recall



S – Shortened Course



